

FOR LEASE

## Post Park Business Center

8719-8861 Boehning Lane, Indianapolis, IN 46219



### PROPERTY HIGHLIGHTS

Excellent visibility; west building fronts I-70

Dock and drive-in access

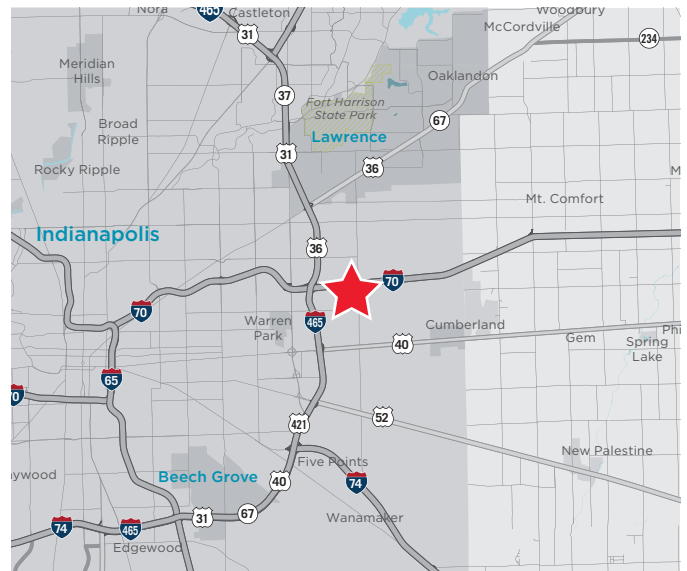
Clear height: 16' - 18'

Double row parking

Easy access to I-70 and I-465 via Post Road

Zoned CS

Wet sprinkler system



#### KEVIN W. ARCHER

Senior Director  
+1 317 218 7217  
kevin.archer@cushwake.com

#### TODD T. VANNATTA, SIOR

Executive Director  
+1 317 639 0455  
todd.vannatta@cushwake.com



**CUSHMAN &  
WAKEFIELD**

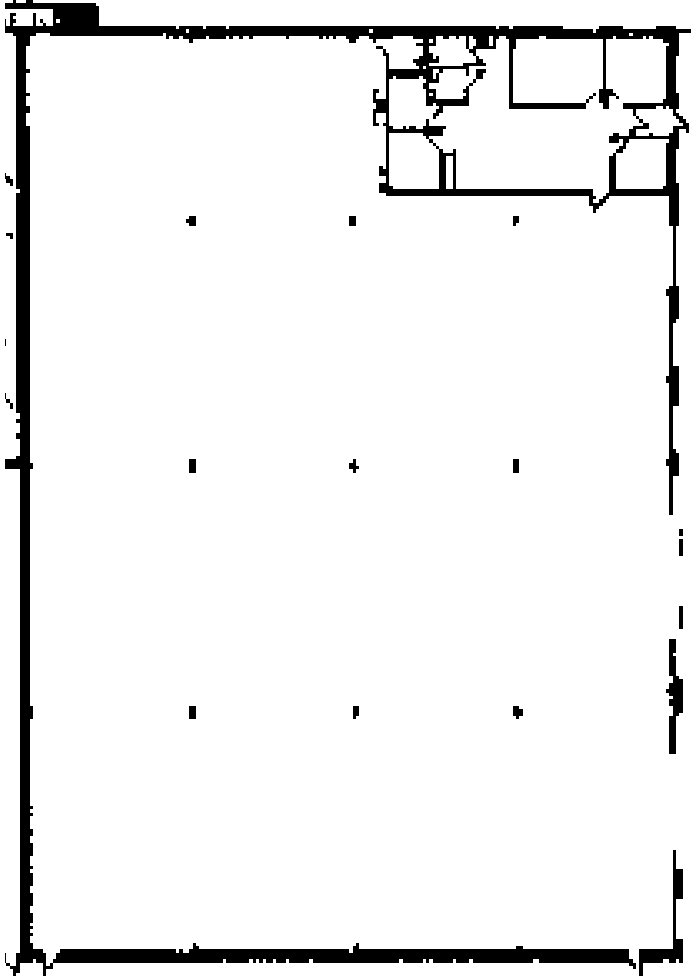
cushmanwakefield.com

FOR LEASE

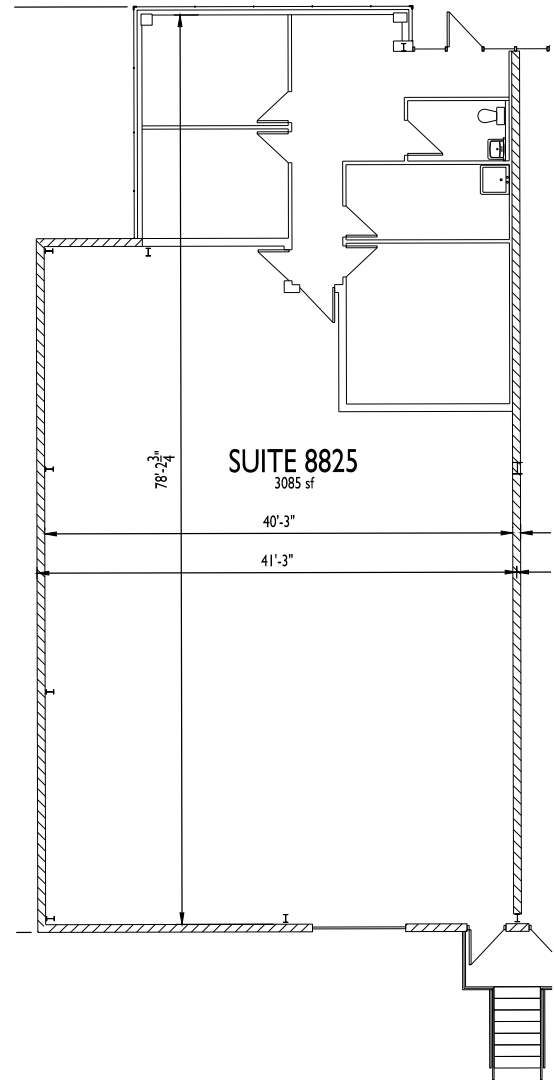
# Post Park Business Center

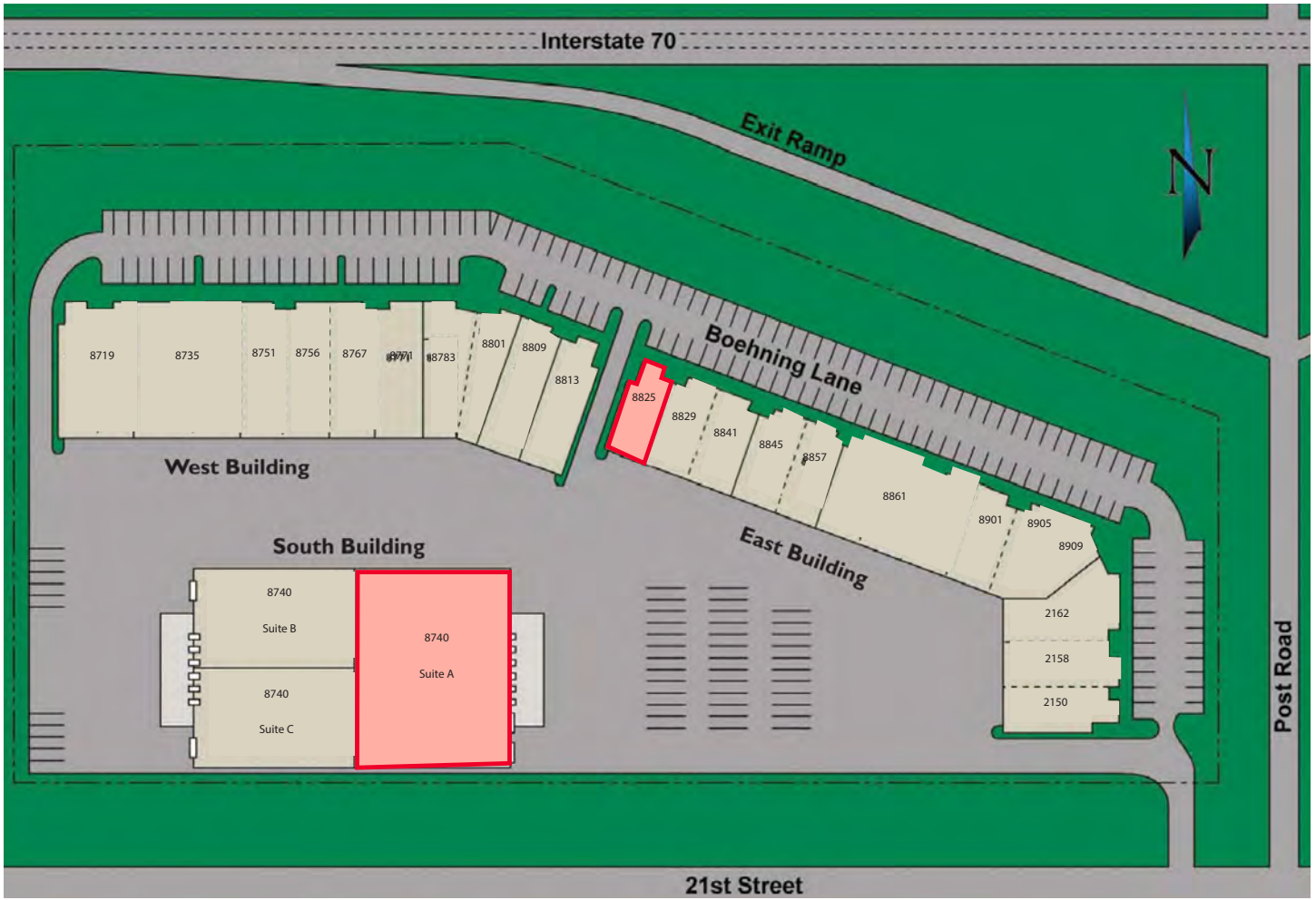
8719-8861 Boehning Lane, Indianapolis, IN 46219

**Suite 8740 A**  
**20,400 SF**  
**Available 5/1/2025**



**Suite 8825**  
**3,085 SF**





**Space Available**

Suite	Total SF	Office SF	Docks/D-I	Clear Ht	Base Rate/SF	OPEX	Mo. Rent
8740A	20,400 SF	±2,000 SF	2 / 6	16' - 18'	\$7.00/SF	\$2.90	\$16,830.00
8825	3,085 SF	939 SF	1/0	16' - 18'	\$7.25/SF	\$2.90	\$2,609.40



FOR LEASE

# Post Park Business Center

8719-8861 Boehning Lane, Indianapolis, IN 46219



## Aerial



### KEVIN W. ARCHER

Senior Director  
+1 317 218 7217  
kevin.archer@cushwake.com

### TODD T. VANNATTA, SIOR

Executive Director  
+1 317 639 0455  
todd.vannatta@cushwake.com

One American Square, Suite 1800  
Indianapolis, IN 46282  
Main +1 317 639 0515  
Fax +1 317 639 0504  
[cushmanwakefield.com](http://cushmanwakefield.com)