



± 11,384 SF AVAILABLE

SHANNON OAKS

201 SHANNON OAKS CIRCLE | CARY, NC 27511



PROPERTY HIGHLIGHTS

- 58,950 SF, 2-story Class A Office building
- In walking distance of restaurants and shopping
- Convenient Cary location, 15 minutes from RDU International Airport
- Rental Rate: Negotiable
- Parking Ratio: 4.0/1000

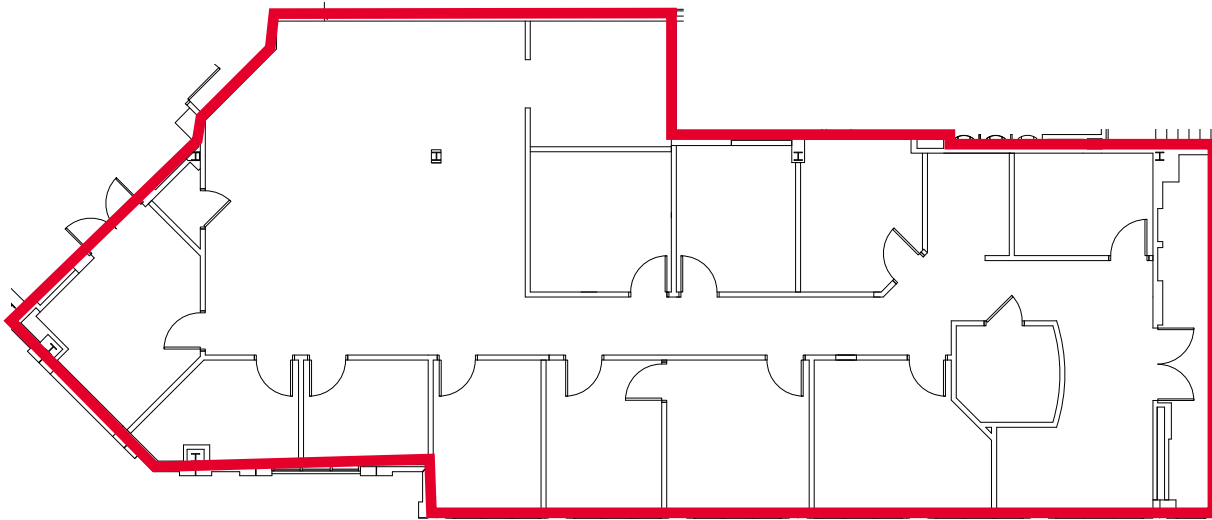
AVAILABLE SUITES

Suite 100	3,362 RSF
Suite 125	2,430 RSF
Suite 201	7,378 RSF
Suite 204	1,785 RSF
Suite 205	2,221 RSF



FLOOR PLAN

SUITE 100
3,362 RSF

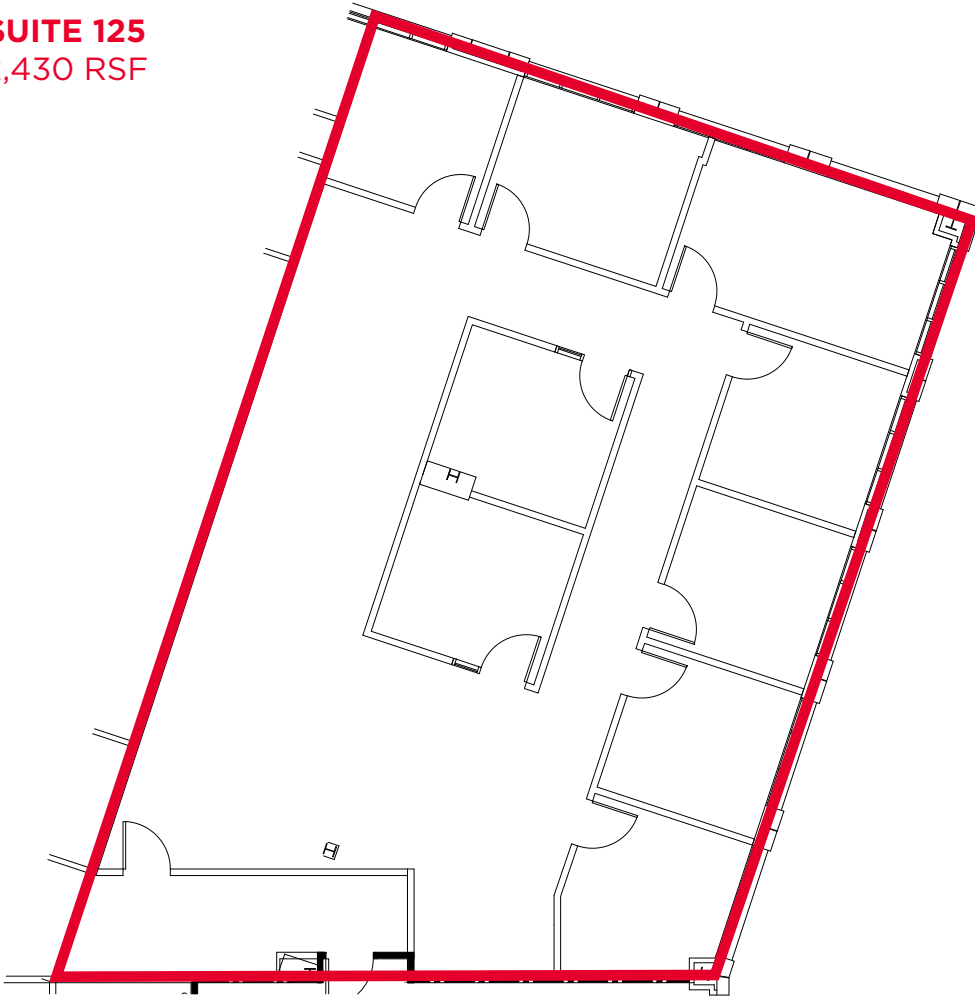


SPEC SUITE

SUITE 100
3,362 RSF

FLOOR PLAN

SUITE 125
2,430 RSF



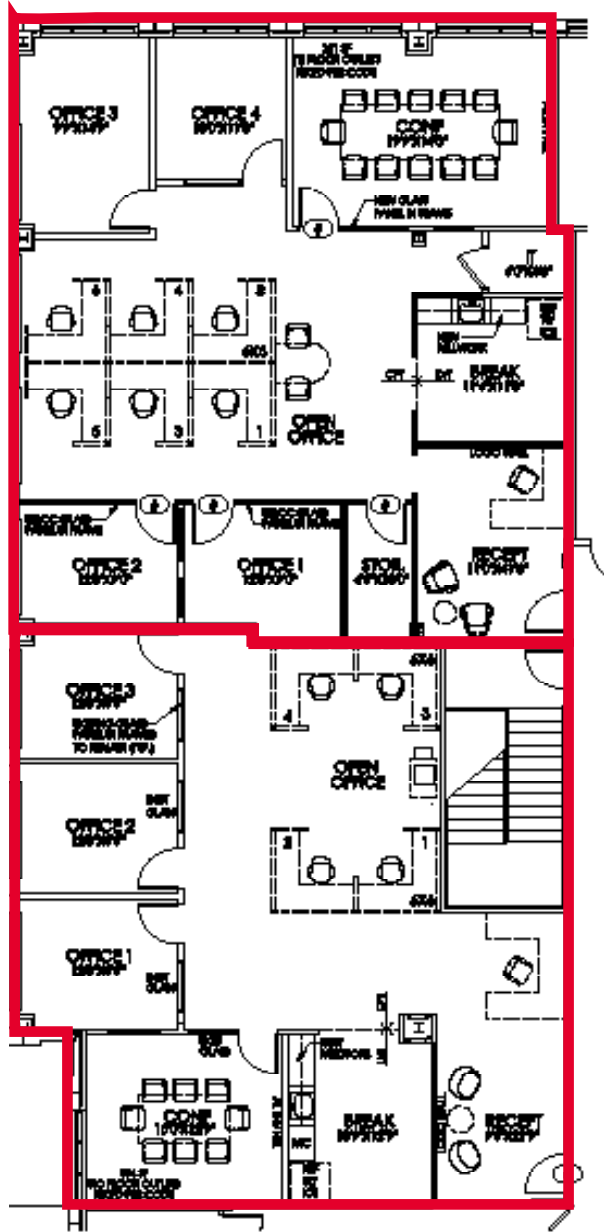
SPEC SUITE

SUITE 125
2,430 RSF

FLOOR PLAN

SUITE 205
2,221 RSF

SUITE 204
1,785 RSF



SPEC SUITE

SUITE 204
1,785 RSF

&

SUITE 205
2,221 RSF

AERIAL MAP

1.5 MI

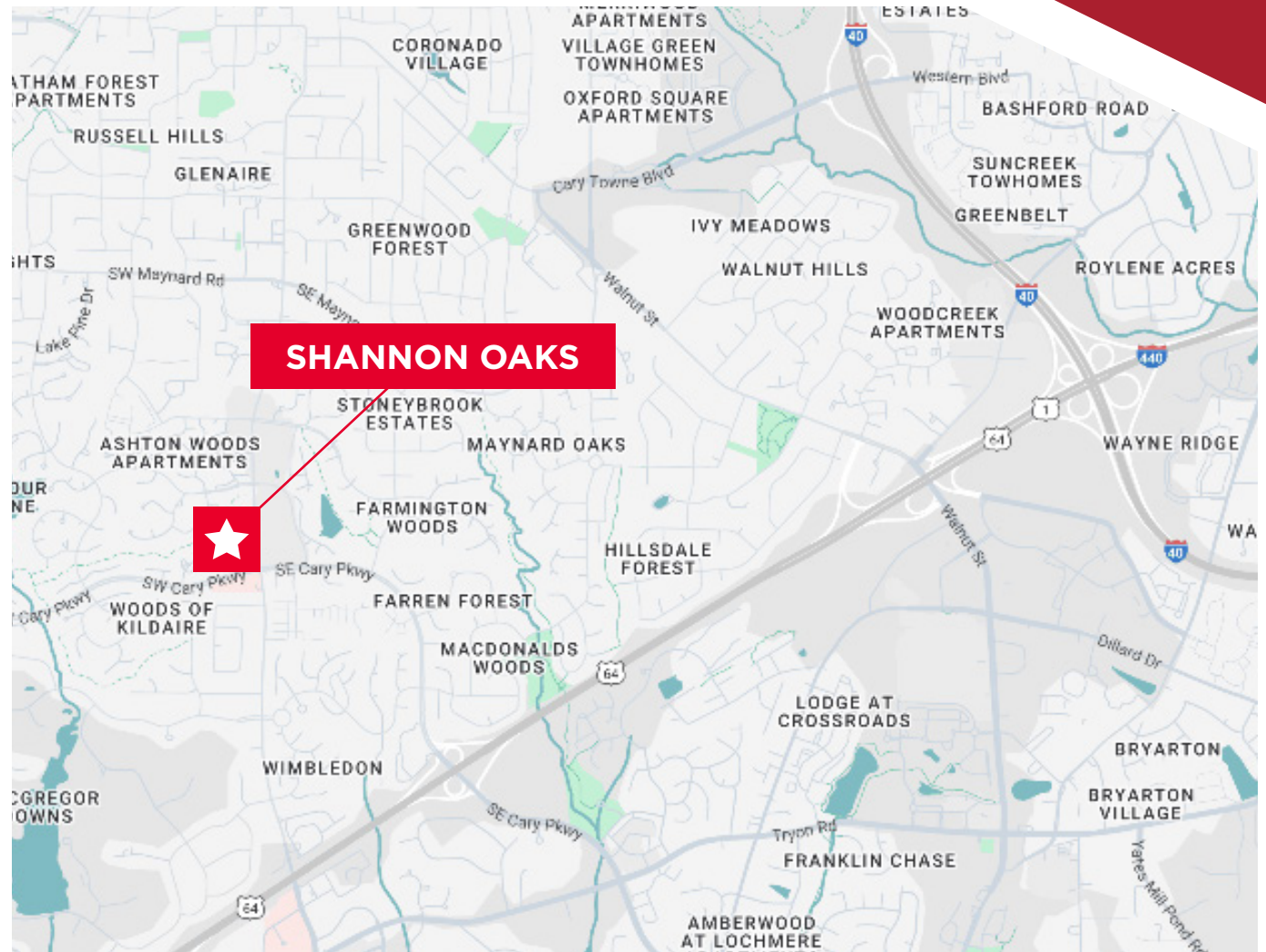
To Access U.S. 1 &
Hwy 64

3.8 MI

To Access I-40

4 MI

To Access I-440



FOR MORE INFORMATION:

KENT HONEYCUTT

Senior Director

+1 919 612 2766

kent.honeycutt@cushwake.com

1 Fenton Main Street, Suite 480
Cary, NC 27511 | USA

cushmanwakefield.com

©2024 Cushman & Wakefield. All rights reserved. The information contained in this communication is strictly confidential. This information has been obtained from sources believed to be reliable but has not been verified. NO WARRANTY OR REPRESENTATION, EXPRESS OR IMPLIED, IS MADE AS TO THE CONDITION OF THE PROPERTY (OR PROPERTIES) REFERENCED HEREIN OR AS TO THE ACCURACY OR COMPLETENESS OF THE INFORMATION CONTAINED HEREIN, AND SAME IS SUBMITTED SUBJECT TO ERRORS, OMISSIONS, CHANGE OF PRICE, RENTAL OR OTHER CONDITIONS, WITHDRAWAL WITHOUT NOTICE, AND TO ANY SPECIAL LISTING CONDITIONS IMPOSED BY THE PROPERTY OWNER(S). ANY PROJECTIONS, OPINIONS OR ESTIMATES ARE SUBJECT TO UNCERTAINTY AND DO NOT SIGNIFY CURRENT OR FUTURE PROPERTY PERFORMANCE.

