

±3,784 SF TURN-KEY 1ST GENERATION BUILD-OUT READY FOR IMMEDIATE OCCUPANCY

SIXE 50 LIVE

650 LIVE OAK AVENUE
SUITE: 100, MENLO PARK

FLEXIBLE TERMS AVAILABLE
MOVE-IN READY SUITE 100



A FRESH START

AN OFFICE ENVIRONMENT READY
FOR WHAT'S NEXT



NATURAL LIGHT



INDOOR/OUTDOOR



SECURED
UNDERGROUND
PARKING

SIX
50
M



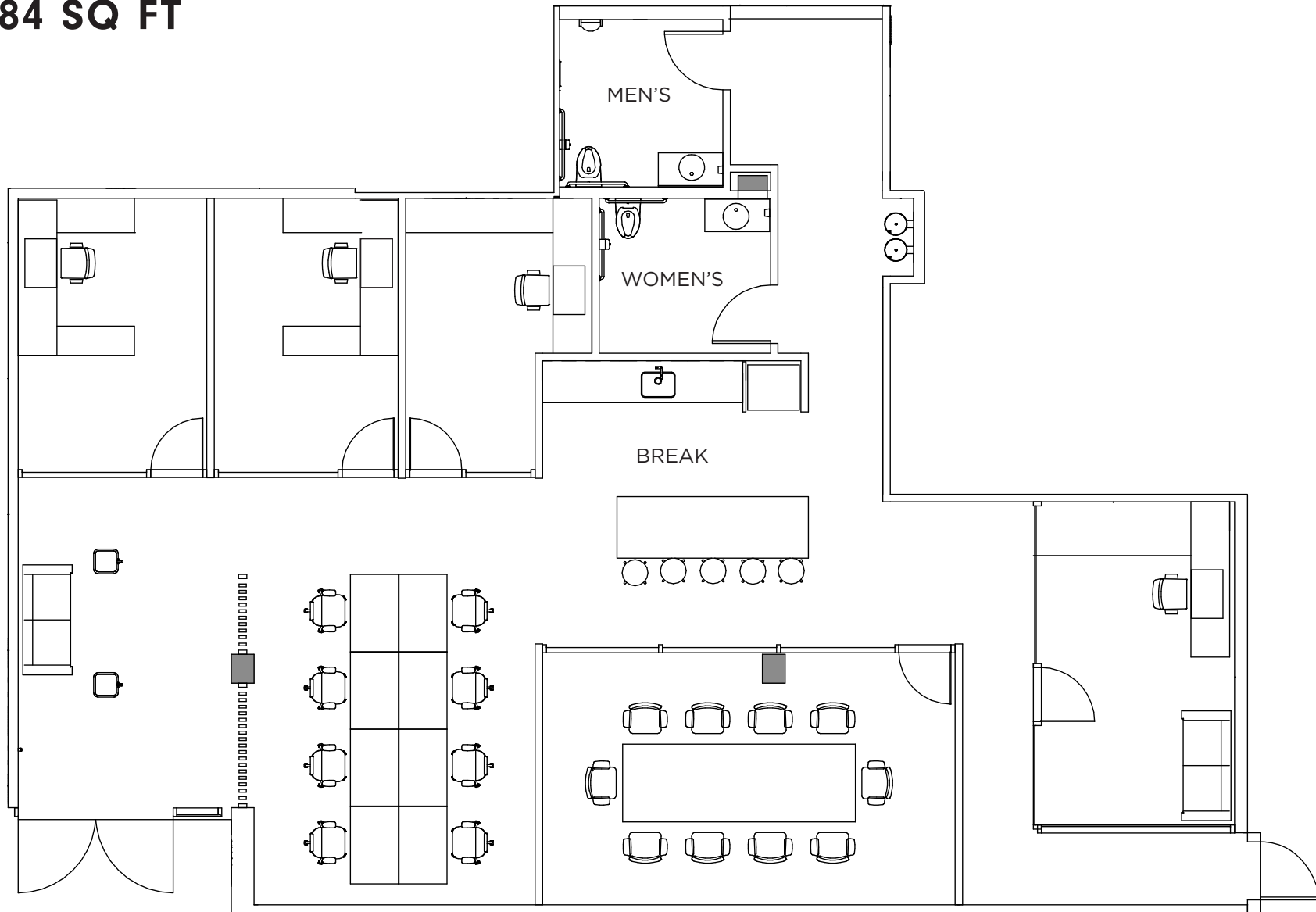
SIXE
50 LIVE



THE SPACE FOR SUCCESS

AVAILABLE FOR IMMEDIATE OCCUPANCY

±3,784 SQ FT



AMENITIES MAP



CALTRAIN STATION is in a walking distance.



SIX
50
LIVE



GUILD THEATER
The venue holds 500+ patrons and hosts a wide range of music, film, and special events.

SILICON VALLEY AT YOUR DOORSTEP



PALO ALTO

STANFORD

CALTRAIN
STATION

DOWNTOWN
MENLO PARK

SIXE
50

**SIX
50** **LIVE**

**TURN-KEY 1ST GENERATION BUILD-OUT
AVAILABLE FOR IMMEDIATE OCCUPANCY**

TOUR THE LATEST IN MENLO PARK

DEVELOPER
KENSON VENTURES & THE MINKOFF GROUP

ARCHITECT
HGA ARCHITECTS



DAVID HIEBERT LIC #01189320
VICE CHAIRMAN
650.320.0250
DAVID.HIEBERT@CUSHWAKE.COM

DAN PERSYN LIC #01184798
EXECUTIVE MANAGING DIRECTOR
650.320.0255
DAN.PERSYN@CUSHWAKE.COM

DAVID DOVE LIC #01035766
DIRECTOR
650.814.1994
DAVID.DOVE@CUSHWAKE.COM