

FOR SALE

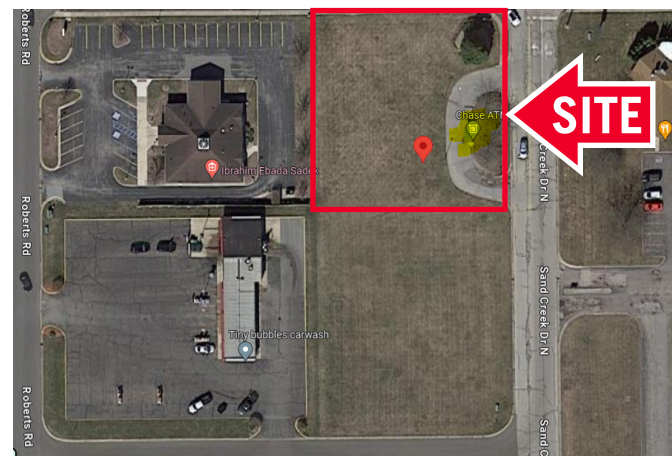
Land Near I-94 & SR 49

460 Sand Creek Drive, Chesterton



Property Highlights

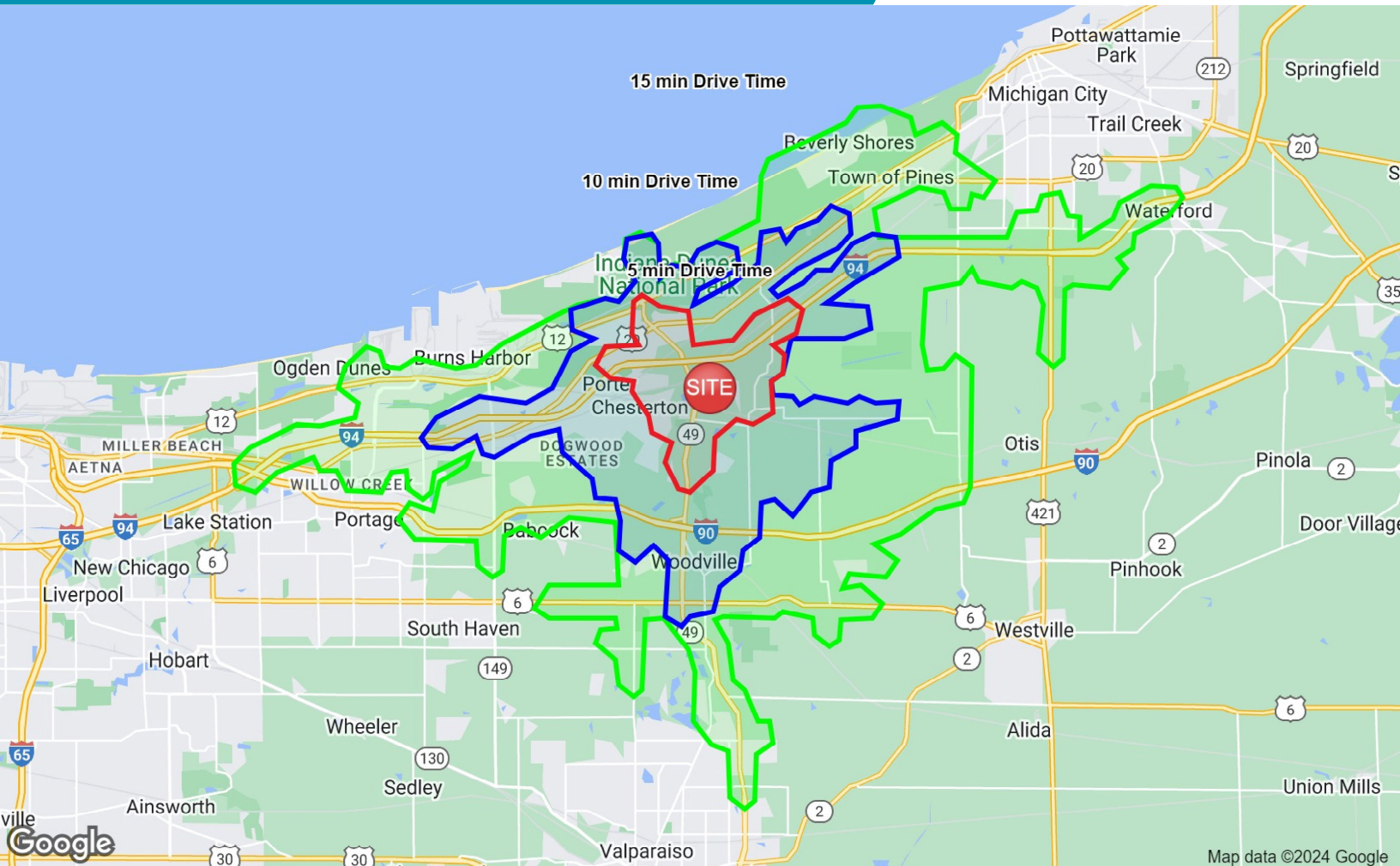
- Sale Price \$150,000
- 0.5 Acres fronting Indian Boundary Road
- Excellent visibility to Indian Boundary Road
- High traffic counts of 13,726 vehicles per day on Indian Boundary Road and 54,951 vehicles per day on I-94
- Zoned B-3
- Near Aldi, Jewel/Osco & Walgreens
- Franciscan Health nearby



Contact

BILL FRENCH
Executive Director
+1 317 639 0430
bill.french@cushwake.com

One American Square
Suite 1800
Indianapolis, IN 46282
Main +1 317 634 6363



Demographics - 15-minute Drive Time

| | |
|-----------------------------|-----------|
| Population | 46,213 |
| Daytime Population | 35,126 |
| Estimated Households | 18,751 |
| Avg. Household Income | \$113,466 |
| Median Age | 41.5 |

Contact

BILL FRENCH
 Executive Director
 +1 317 639 0430
 bill.french@cushwake.com

One American Square
 Suite 1800
 Indianapolis, IN 46282
 Main +1 317 634 6363