



BELOW MARKET RATES

South Seattle Sublease 7,500 SF - 15,000 SF

Property Highlights

- 7,500 SF - 15,000 SF
- Minimal office
- 24' Clear Height
- 4 Dock High Doors
- 1 Pony Dock
- 1 Oversized Grade Level Door
- Available November 1, 2023
- Master lease expires November 30, 2026
- Will consider short-term subleases
- **Contact Brokers for Rates**



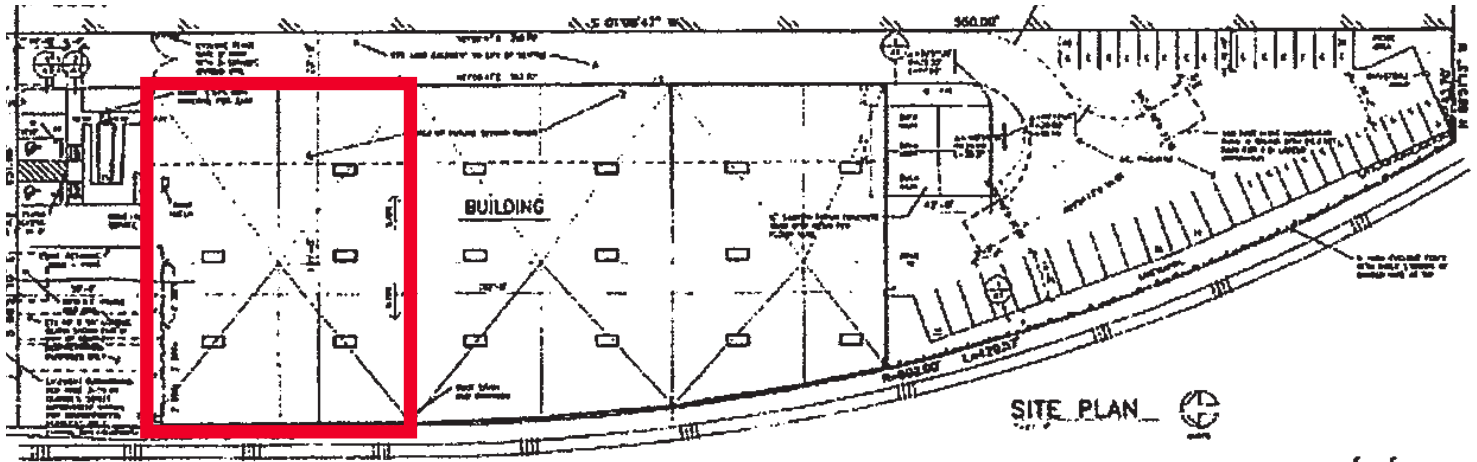
Connor Cree
Managing Director
+1 206 521 0289
connor.cree@cushwake.com

Patrick Mullin
Executive Managing Director
+1 206 521 0265
patrick.mullin@cushwake.com

Scott Alan, SIOR
Executive Managing Director
+1 206 521 0236
scott.alan@cushwake.com

601 Union Street, Suite 1100
Seattle, Washington 98101
Main +1 206 682 0666
Fax +1 206 521 0298
cushmanwakefield.com

Site Plan



Additional Photos



Connor Cree
Managing Director
+1 206 521 0289
connor.cree@cushwake.com

Patrick Mullin
Executive Managing Director
+1 206 521 0265
patrick.mullin@cushwake.com

Scott Alan, SIOR
Executive Managing Director
+1 206 521 0236
scott.alan@cushwake.com

601 Union Street, Suite 1100
Seattle, Washington 98101
Main +1 206 682 0666
Fax +1 206 521 0298
cushmanwakefield.com