



**CUSHMAN &
WAKEFIELD**

3536 Mendocino Avenue

Santa Rosa, CA

READY FOR OCCUPANCY



FULLY IMPROVED DENTAL OFFICE

±1,594 sf

Lease rate negotiable

Fully improved dental suite has five operatories, open back-office workspace, a private office, reception and waiting room and two restrooms. The operatories have beautiful westerly views from large third-story windows.

The Fountaingrove Medical Building is one of Santa Rosa's most prominent Class A medical offices with convenient Highway 101 access and strategically located between Sutter Health Center and St. Joseph's Memorial Hospital.

The suite is very well appointed and conveniently accessible within the building.

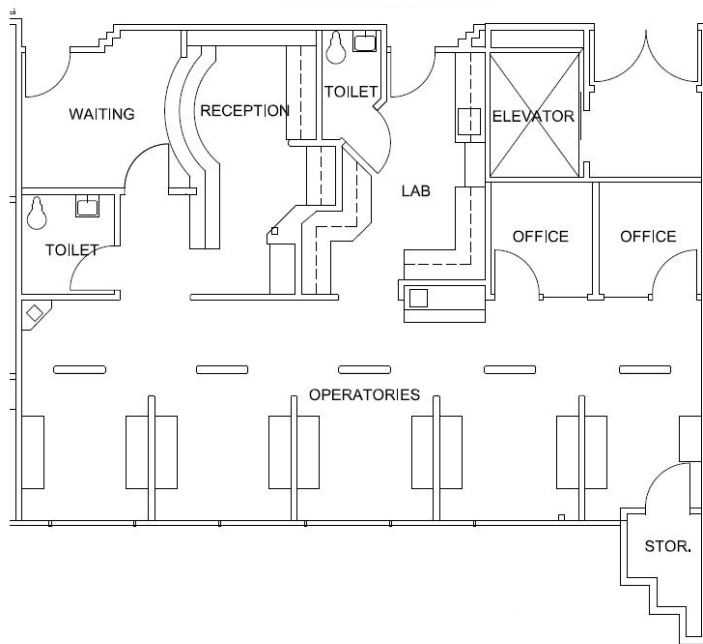


For more information, please contact:

Jeff Negri
Senior Director
+1 707 360 1300
Jeff.Negri@cushwake.com

cushmanwakefield.com

Cushman & Wakefield Copyright 2015. No warranty or representation, express or implied, is made to the accuracy or completeness of the information contained herein, and same is submitted subject to errors, omissions, change of price, rental or other conditions, withdrawal without notice, and to any special listing conditions imposed by the property owner(s). As applicable, we make no representation as to the condition of the property (or properties) in question.



For more information, please contact:

Jeff Negri
Senior Director
+1 707 360 1300
Jeff.Negri@cushwake.com