



## DOWNTOWN SUBMARKET



# 990 S. NINTH STREET

Louisville, KY 40203

**265,000 SF  
FOR LEASE**

## PROPERTY HIGHLIGHTS

- Approximately 265,000 total sf
- 16,108 – 236,550 sf available
- 16,108 sf of corporate office area
- Eight (8) dock doors
- Seven (7) drive-in doors
- 191 parking spaces
- Compressed air
- Wet sprinkler system
- Gas heat
- Convenient access to I-64 and Downtown
- 2,000-amp, 277/480-volt, 3-phase power



**STEPHAN F. GRAY, SIOR**  
Senior Director  
Certified Supply Chain Professional  
+1 502 719 3256  
sgray@commercialkentucky.com

**ROBERT B. WALKER, SIOR, CCIM**  
Senior Director  
Certified Supply Chain Professional  
+1 502 719 3254  
rwalker@commercialkentucky.com

333 E. Main Street, Suite 510 | Louisville, KY 40202  
+1 502 589 5150  
[www.CommercialKentucky.com](http://www.CommercialKentucky.com)

©2024 Cushman & Wakefield. All rights reserved. The information contained in this communication is strictly confidential. This information has been obtained from sources believed to be reliable but has not been verified. No warranty or representation, express or implied, is made as to the condition of the property (or properties) referenced herein or as to the accuracy or completeness of the information contained herein, and same is submitted subject to errors, omissions, change of price, rental or other conditions, withdrawal without notice, and to any special listing conditions imposed by the property owner(s). Any projections, opinions or estimates are subject to uncertainty and do not signify current or future property performance.

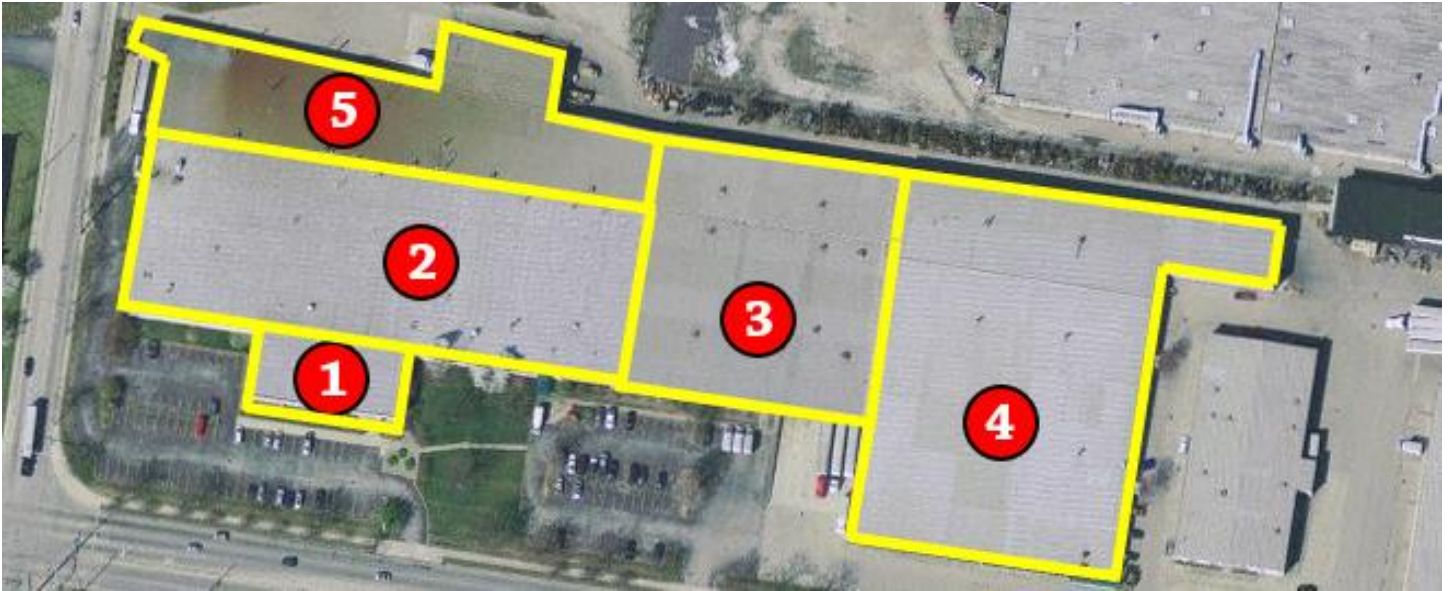
# 990 S. NINTH STREET

Louisville, KY 40203

**265,000 SF FOR LEASE**



## AERIAL/LOCATION MAP



### SECTION 1

- Approximately 16,108-sf office area on two (2) floors
- +/- 8,054 square feet on each floor
- Twenty-five (25) private offices/conference rooms on first floor
- Eleven (11) private offices/conference rooms on second floor
- One (1) coffee bar on each floor
- Two (2) bathrooms on each floor

### SECTION 2

- Approximately 86,151 square feet
- +/- 1,131 square feet of office and restroom area
- Interior dock and one (1) drive-in door
- Bus duct
- Air-conditioned warehouse with two (2) 720,000 BTU air-handling u
- Ceiling heights 16' - 20'

### SECTION 3

- Approximately 72,000 square feet
- +/- 3,071 square feet of office area
- +/- 6,400 square feet shop/maintenance area
- Two (2) 8" x 8" drive-in doors
- Bus duct (400-amp)
- Air-conditioned warehouse
- Plant bathrooms
- Ceiling heights 14' - 16'

### SECTION 4

- Approximately 44,737 square feet
- Office space and two (2) plant bathrooms
- One (1) Interior dock with leveler (73' deep)
- Two (2) 16' x 22' drive-in doors
- One (1) 8' x 10' dock door
- Three (3) 5' x 10' docks at 18" height
- Ceiling heights 13' - 16'

### SECTION 5

- Approximately 49,940 square feet
- +/- 1,072 square feet of office area
- Six (6) 8' x 10' dock doors with levelers
- One (1) 8' x 10' drive-in door
- Ceiling heights 12' - 20'

### STEPHAN F. GRAY, SIOR

Senior Director  
Certified Supply Chain Professional  
+1 502 719 3256  
sgray@commercialkentucky.com

### ROBERT B. WALKER, SIOR, CCIM

Senior Director  
Certified Supply Chain Professional  
+1 502 719 3254  
rwalker@commercialkentucky.com

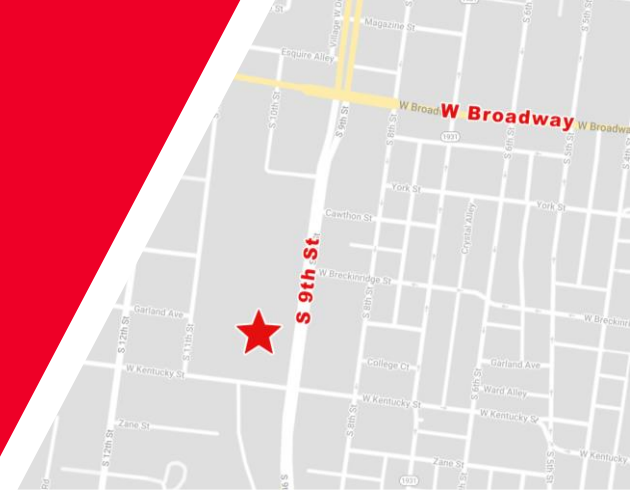
333 E. Main Street, Suite 510  
Louisville, KY 40202  
+1 502 589 5150  
www.CommercialKentucky.com



# 990 S. NINTH STREET

Louisville, KY 40203

**265,000 SF FOR LEASE**



## AERIAL/LOCATION MAP



### Demographics

	1 Mile	3 Mile	5 Mile
Population	14,899	119,732	256,973
AVG. HH Income	\$41,033	\$52,680	\$65,040
Daytime Population	39,554	206,428	339,435

### Traffic Counts

S 9th St: 17,016 ADT

#### STEPHAN F. GRAY, SIOR

Senior Director  
Certified Supply Chain Professional  
+1 502 719 3256  
sgray@commercialkentucky.com

#### ROBERT B. WALKER, SIOR, CCIM

Senior Director  
Certified Supply Chain Professional  
+1 502 719 3254  
rwalker@commercialkentucky.com

333 E. Main Street, Suite 510  
Louisville, KY 40202  
+1 502 589 5150  
www.CommercialKentucky.com