



# FOR LEASE

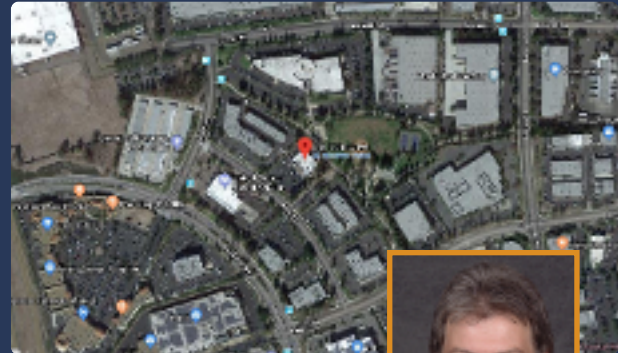
841 Kuhn Drive, Suite 100  
Chula Vista, CA 91914



## 4,627 SF of Class A Medical Office Space

This suite is located in the Eastlake Medical Center Building. This is one of the best areas in Eastlake; the suite overlooks Scobee Park, a seven acre private park and recreational area, which includes volleyball, basketball, tennis courts, soccer and baseball fields, and picnic areas.

- Easy access to HWY-125
- Retail amenities in close proximity
- Enterprise zone incentives



Cushman & Wakefiled  
8780 Sherwood Terrace  
San Diego, CA 92154  
www.cushmanwakefield.com  
(619) 661-0656



**CUSHMAN &  
WAKEFIELD**

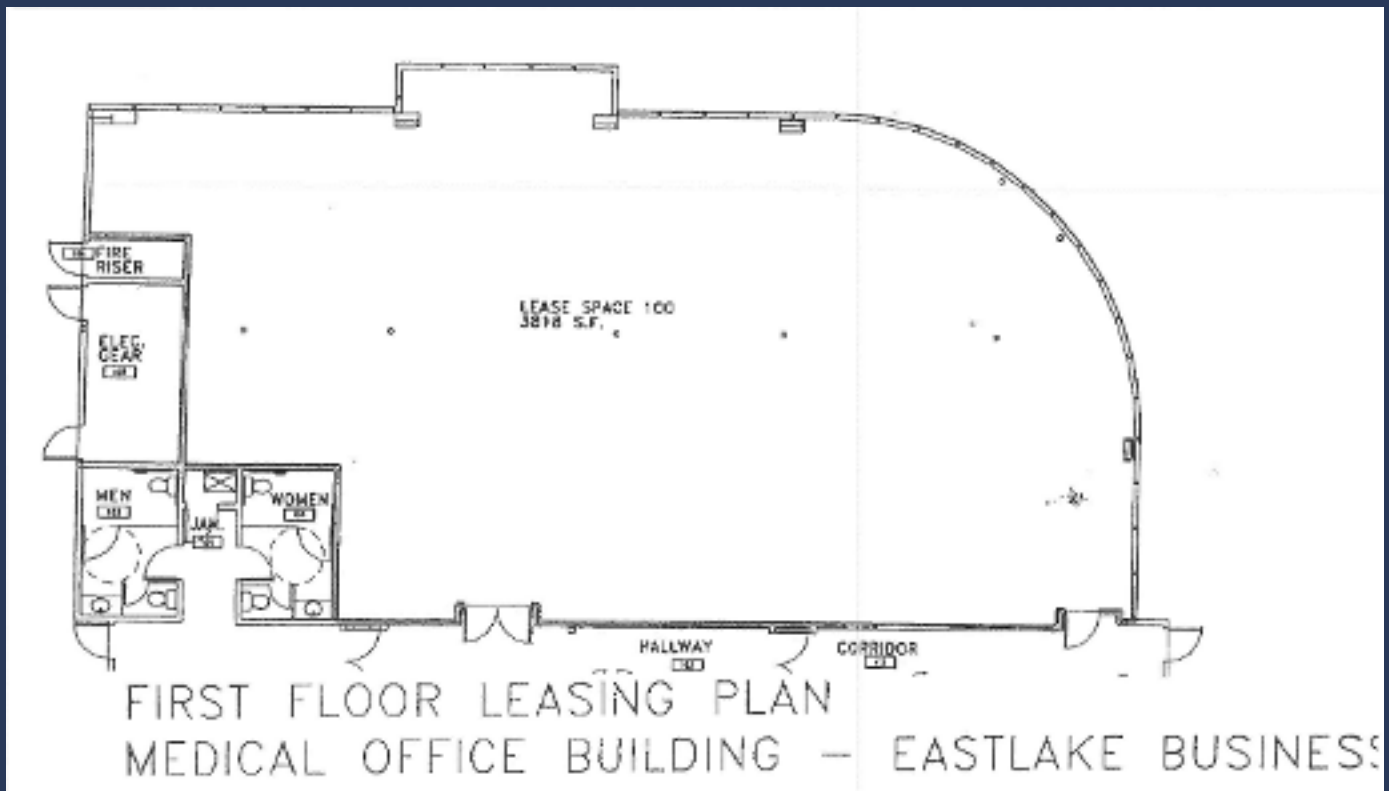
Regan Tully  
Senior Director  
Industrial Division  
License #00712457  
regan.tully@cushwake.com

# FOR LEASE

841 Kuhn Drive, Suite 100  
Chula Vista, CA 91914



<b>Rentable Square Footage</b>	<b>4,627</b>
<b>Rate</b>	<b>\$2.15 PSF-NN</b>
<b>NNN</b>	<b>\$0.65 PSF</b>
<b>TI Allowance</b>	<b>\$161,000.00 / \$35.00 PSF</b>



Cushman & Wakefield  
8780 Sherwood Terrace  
San Diego, CA 92154  
www.cushmanwakefield.com  
(619) 661-0656



**CUSHMAN &  
WAKEFIELD**

Regan Tully  
Senior Director  
Industrial Division  
License #00712457  
regan.tully@cushwake.com

