

OFFICE FOR LEASE

550 EAST WASHINGTON ST
INDIANAPOLIS, IN 46204



\$18.50/sf, full service



Adjacent to Grid, the new retail/multifamily project by Milhaus



7,000 - 14,825 SF available on the 3rd floor



Close proximity to Downtown amenity base



Excellent access to I-65 & I-70



Abundant natural light



Redeveloped in 2016 with modern finishes, upgraded mechanical & electrical systems and new HVAC



Recently renovated in 2023 as Milhaus' new corporate HQ

FOR INFORMATION, CONTACT:

JON R. OWENS, SIOR

Managing Director
+1 317 639 0447
jon.owens@cushwake.com

JOSHUA GRAHAM

Director
+1 317 639 0491
joshua.graham@cushwake.com

One American Square, Suite 1800

Indianapolis, IN 46282 | USA

Main +1 317 634 6363

Fax +1 317 639 0504

cushmanwakefield.com

FOR LEASE

550 EAST WASHINGTON STREET



THIRD FLOOR

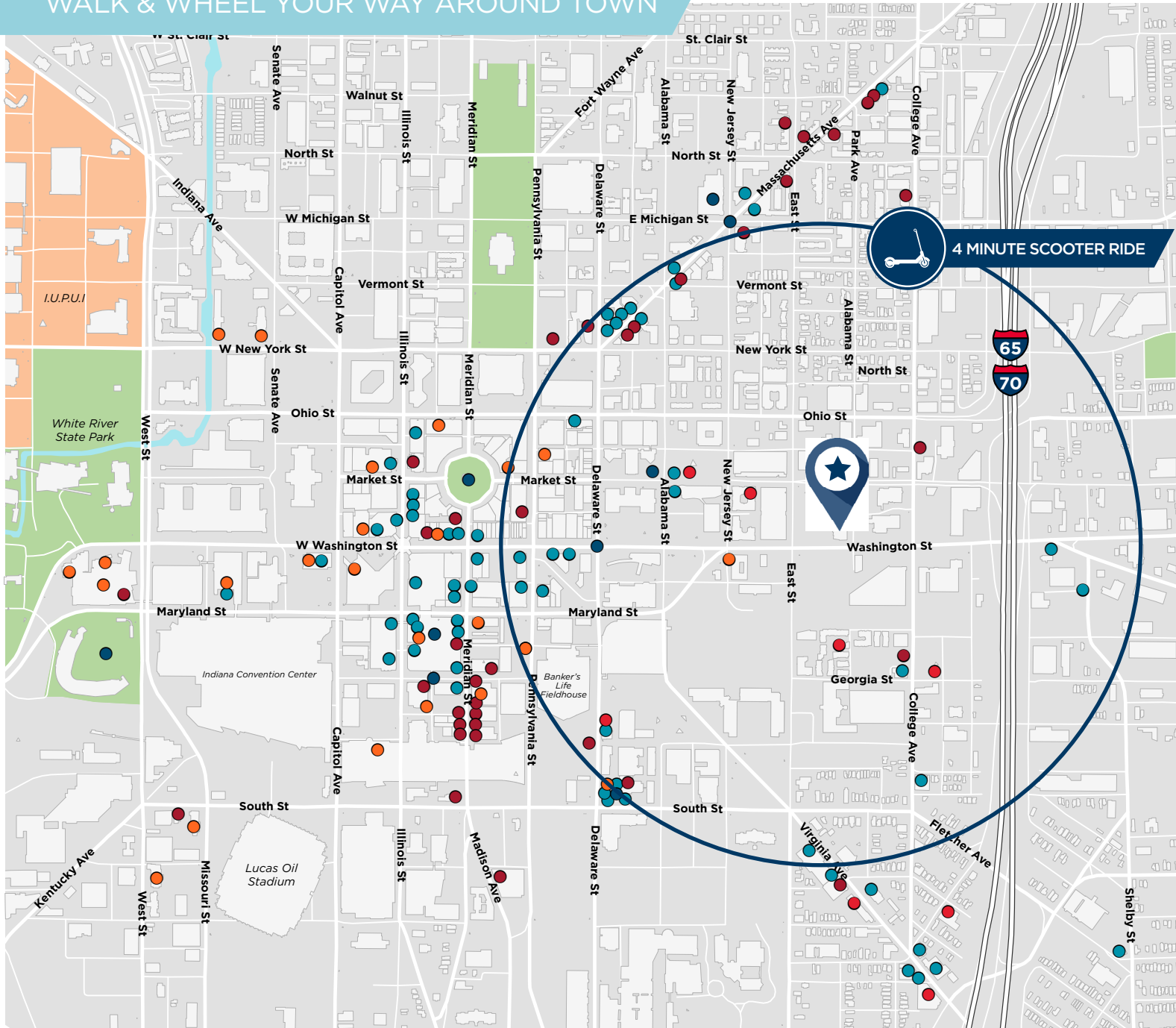


FOR LEASE

550 EAST WASHINGTON STREET



WALK & WHEEL YOUR WAY AROUND TOWN



4 MINUTE SCOOTER RIDE

- Restaurants
- Bars & Breweries
- Points of Interest
- Hotels
- Residential

JON R. OWENS, SIOR
 Managing Director
 +1 317 639 0447
 jon.owens@cushwake.com

JOSHUA GRAHAM
 Director
 +1 317 639 0491
 joshua.graham@cushwake.com

©2023 Cushman & Wakefield. All rights reserved. The information contained in this communication is strictly confidential. This information has been obtained from sources believed to be reliable but has not been verified. No warranty or representation, express or implied, is made as to the condition of the property (or properties) referenced herein or as to the accuracy or completeness of the information contained herein, and same is submitted subject to errors, omissions, change of price, rental or other conditions, withdrawal without notice, and to any special listing conditions imposed by the property owner(s). Any projections, opinions or estimates are subject to uncertainty and do not signify current or future property performance.