

FOR LEASE

NEQ Downtown Indy

609-611 N Delaware St, Indianapolis



Located on IndyGo Busline

LEASE PRICE \$12/SF | 11,344 SF - DIVISIBLE

Property Highlights

- Street-level office, retail or showroom
- Excellent visibility
- High-profile location
- Near Old National Center & Atheneum
- Walking distance from CBD and Bottleworks
- Surrounded by dense high-income residential
- High daytime population of 86,724
- Located on the Cultural Trail & IndyGo bus line
- Up to 50 parking spaces included
- Great location for office, retail or restaurant
- Exterior recently repainted!

Contact

Bill French

Executive Director

+1 317 639 0430

bill.french@cushwake.com

One American Square, Suite 1800

Indianapolis, IN

Main +1 317 639 0515

Fax +1 317 639 0504

cushmanwakefield.com

Downtown Indy Highlights / Attractions



Cultural Trail



Mass Ave



Indianapolis Canal



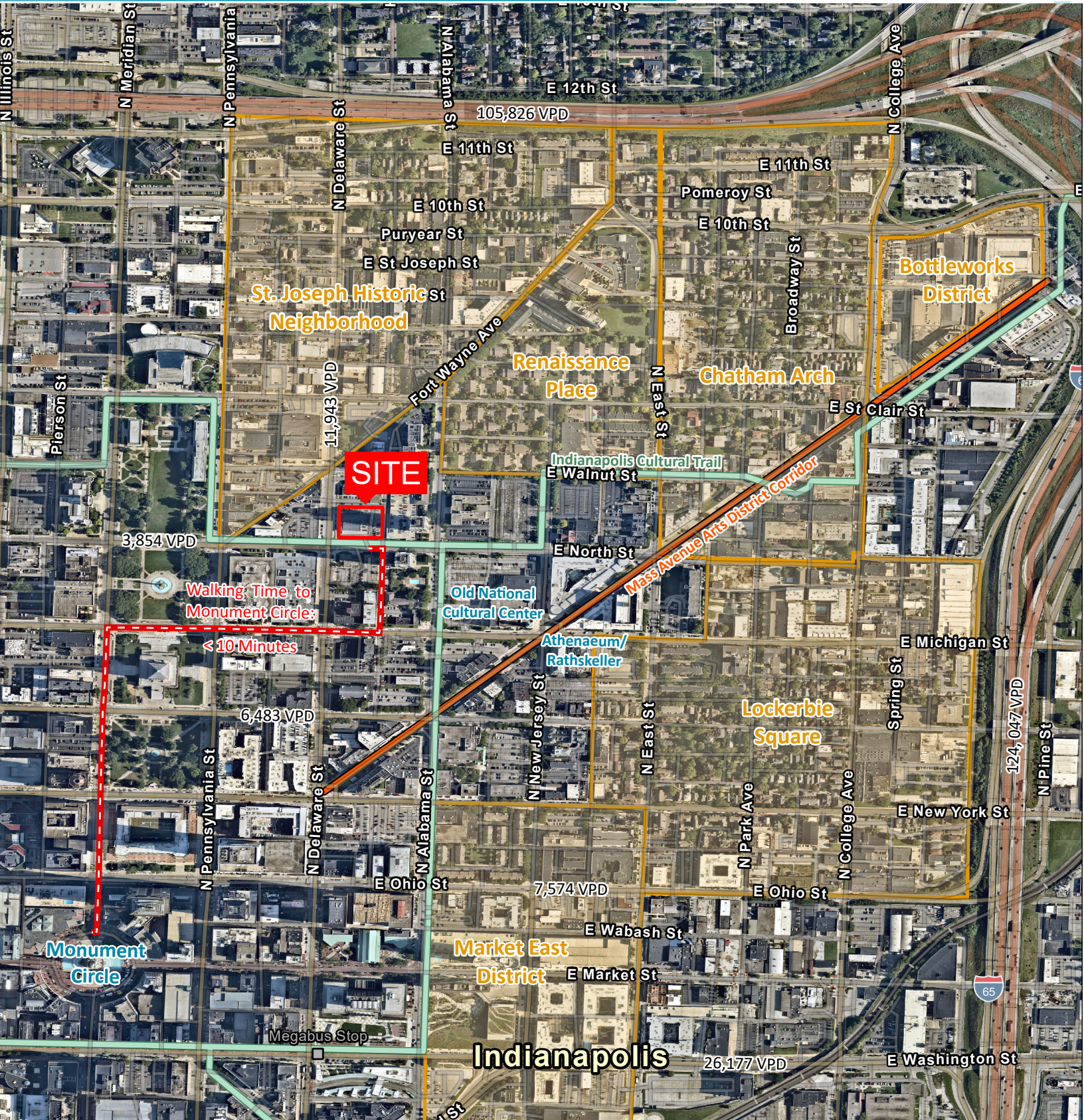
Gainbridge Fieldhouse



Monument Circle



Lucas Oil Stadium



FOR LEASE
NEQ Downtown Indy
609-611 N Delaware St, Indianapolis



SIGNALIZED ACCESS



FRONTAGE TO DELAWARE STREET



UP TO 50 PARKING SPACES INCLUDED

Contact

Bill French
Executive Director
+1 317 639 0430
bill.french@cushwake.com

Cushman & Wakefield © 2024. No warranty or representation, express or implied, is made to the accuracy or completeness of the information contained herein, and same is submitted subject to errors, omissions, change of price, rental or other conditions, withdrawal without notice, and to any special listing conditions imposed by the property owner(s). As applicable, we make no representation as to the condition of the property (or properties) in question.