



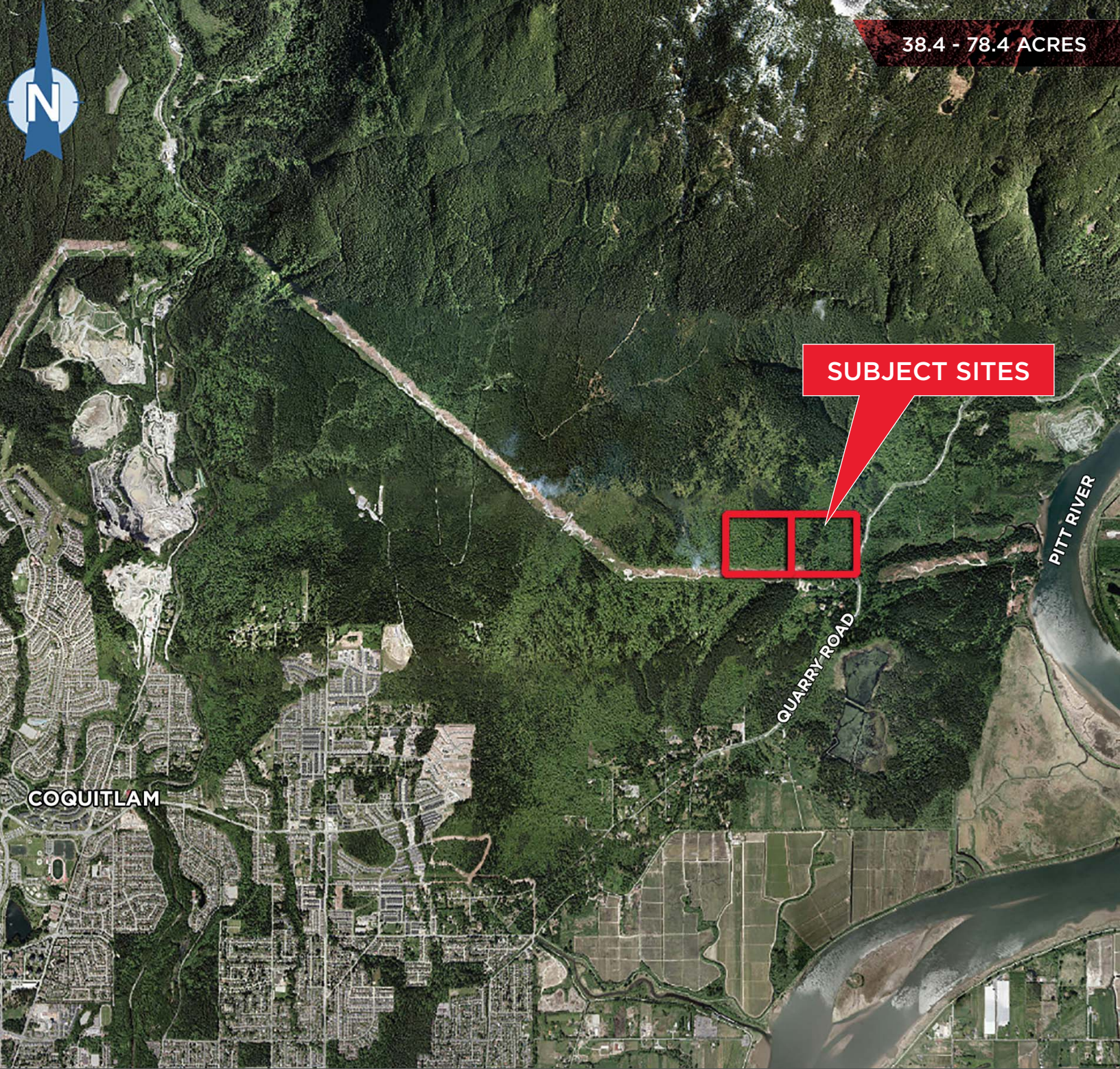
**CUSHMAN &
WAKEFIELD**

FOR SALE

**TWO FUTURE RESIDENTIAL DEVELOPMENT SITE OR
EXCLUSIVE SINGLE FAMILY ESTATE LOTS**

**QUARRY ROAD
COQUITLAM, BC**

38.4 - 78.4 ACRES



Bill Randall

Personal Real Estate Corporation
Senior Vice President
604 608 5967
bill.randall@ca.cushwake.com



CUSHMAN & WAKEFIELD

FOR SALE

FUTURE RESIDENTIAL DEVELOPMENT SITE OR TWO EXCLUSIVE SINGLE FAMILY ESTATE LOTS

**QUARRY ROAD
COQUITLAM, BC**

OPPORTUNITY

To acquire a ±38.4 - 78.4 acre site with beautiful views with long term future development potential, or as a single family estate property.

LOCATION

The property is located on Burke Mountain in Northeast Coquitlam. Northeast Coquitlam comprises a mix of older well-established neighbourhoods as well as newer development, rural residential properties and farms. The majority of the land base is included within designated parks, nature reserves and agricultural lands. New development is directed to lands outside of these areas, at the base of Burke Mountain. Burke Mountain has been identified as an area for population growth since the 1990's.

LEGAL DESCRIPTION

Legal Subdivision 6, Section 21, Township 40, New Westminster District PID: 013-533-789

SITE SIZES

±38.4 acres and 40 acres
Total 78.4 acres

ZONING

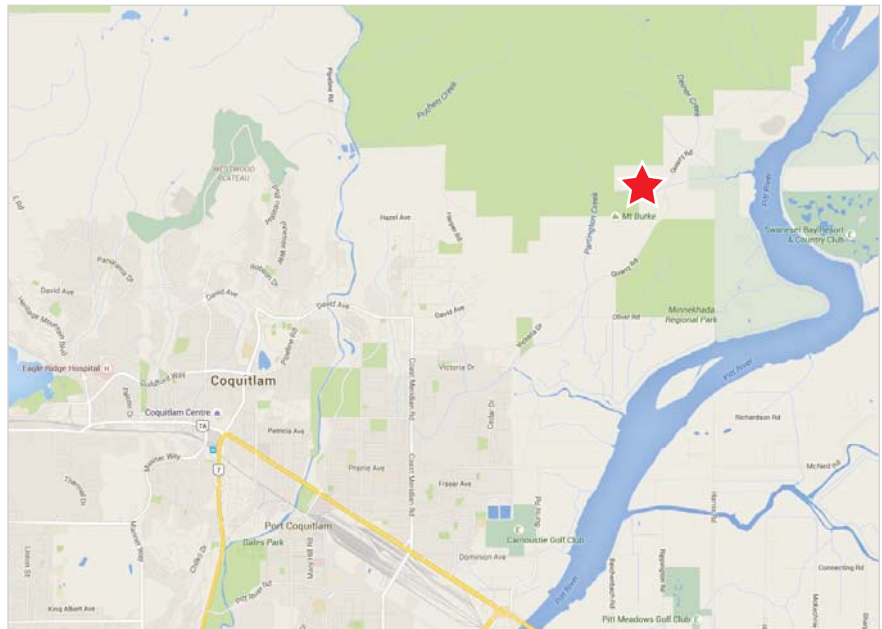
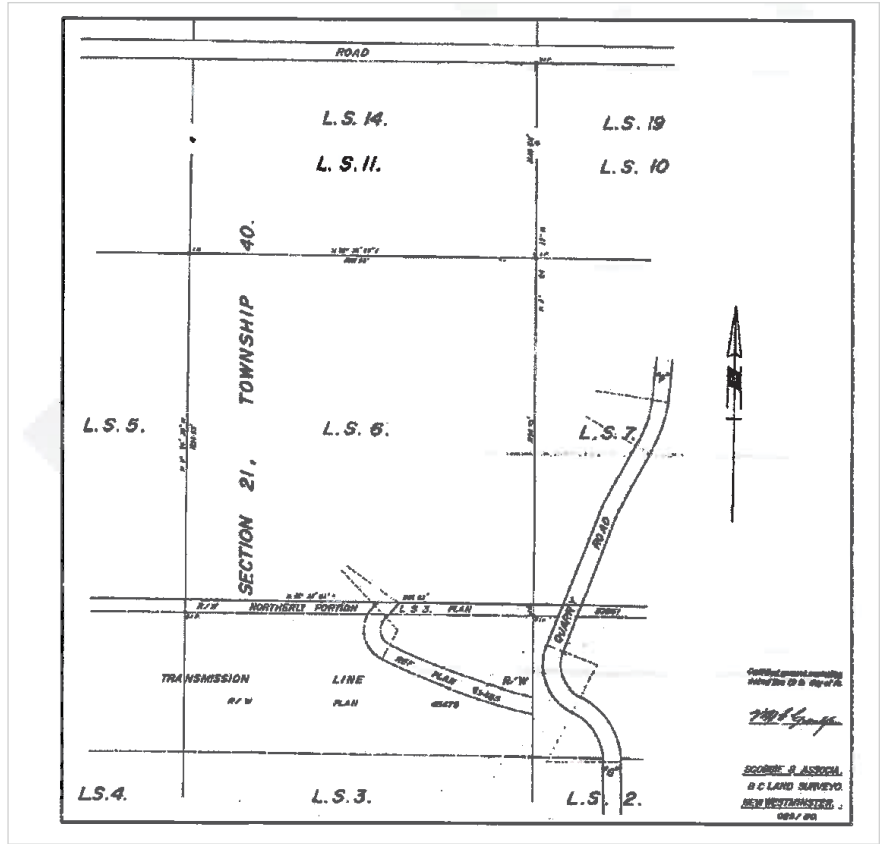
A-3 (Agricultural and Resource Zone)

ASKING PRICE

\$3,250,000 per lot

PROPERTY TAXES (2016)

Approximately \$6,200 per lot



Bill Randall

Personal Real Estate Corporation
Senior Vice President
604 608 5967
bill.randall@ca.cushwake.com

E.&O.E.: This communication is not intended to cause or induce breach of an existing agency agreement.

The information contained herein was obtained from sources which we deem reliable and, while thought to be correct, is not guaranteed by Cushman & Wakefield ULC 01/18 bg