

CUSHMAN &
WAKEFIELD

NEW OWNERSHIP

FOR LEASE

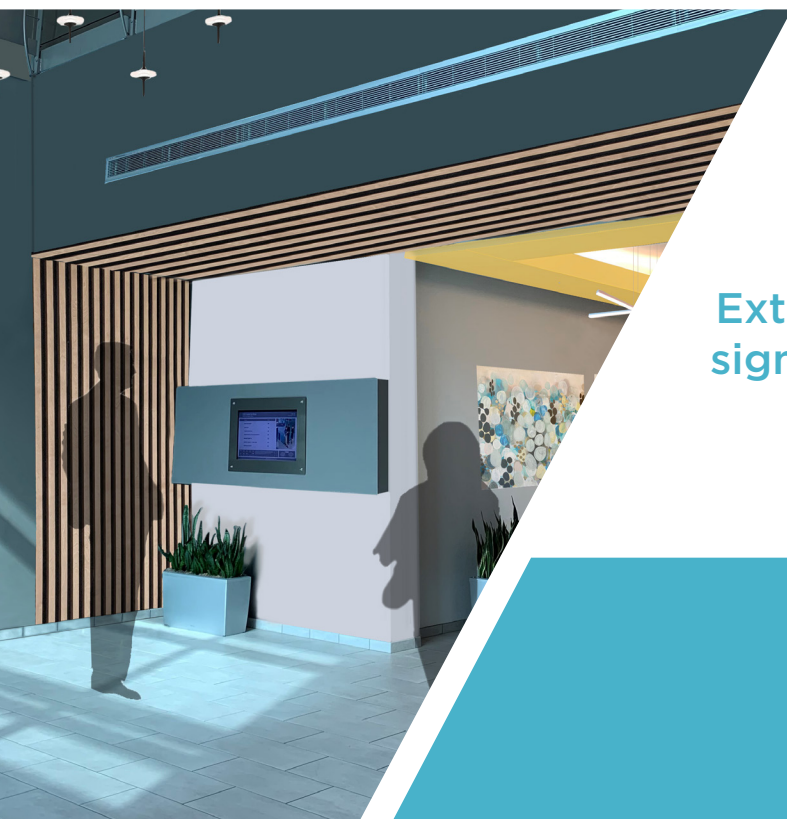
CityCenter @Penn

1320 City Center Drive, Carmel, IN 46032



BUILDING OVERVIEW

New ownership, Iconic Property Partners, is proud to present for lease City Center @ Penn in Carmel, Indiana. The building offers 46,000 square foot floorplates with 4,500-64,000 square feet available for lease. City Center @ Penn's unique location allows direct access from U.S. 31 via the Old Meridian roundabout with close to 70+ retail/shopping establishments at Clay Terrace and downtown Carmel.



1

Ideal corporate headquarters location

2

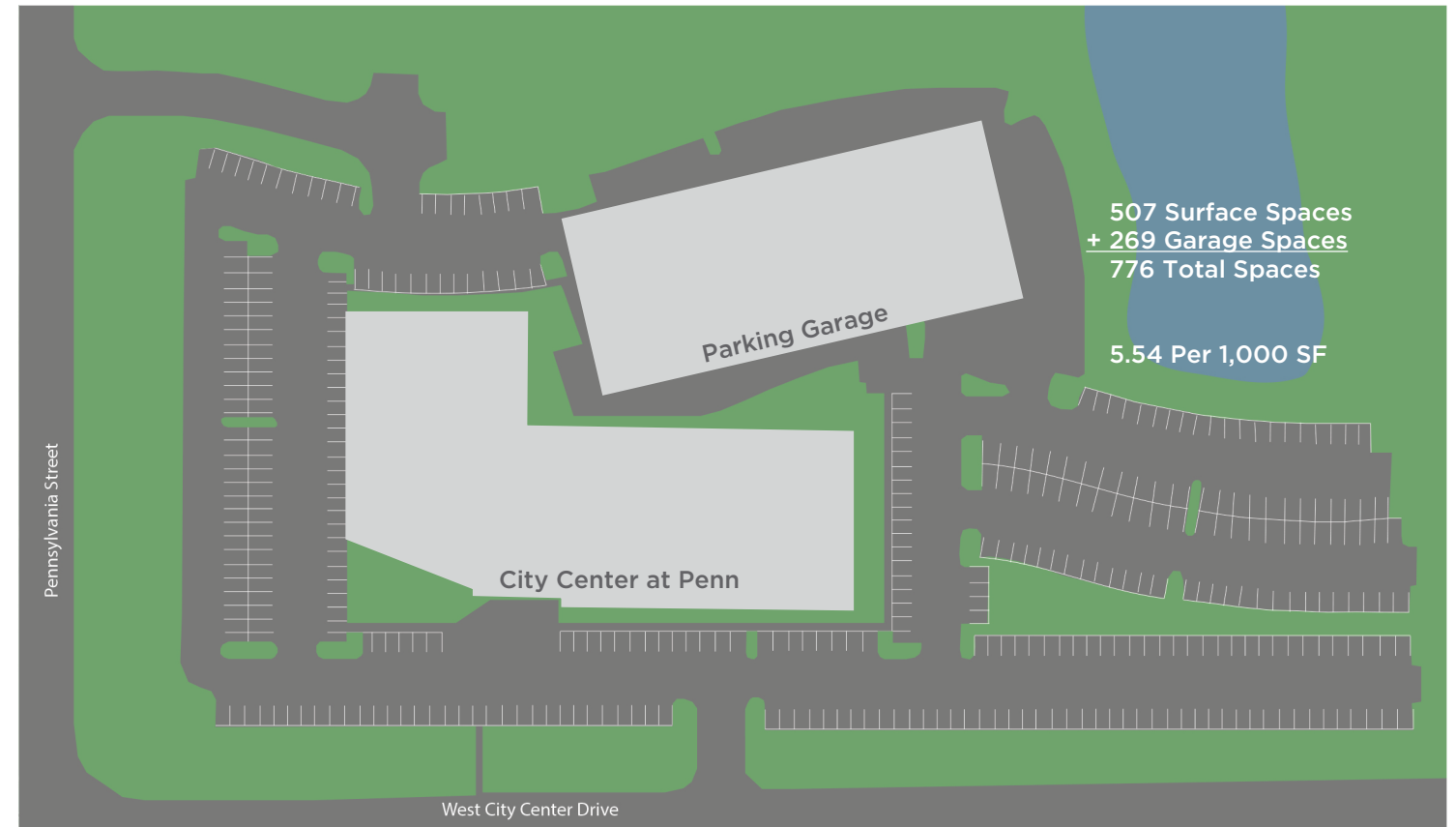
Free parking garage provides more parking & convenience

3

Exterior building signage available

4

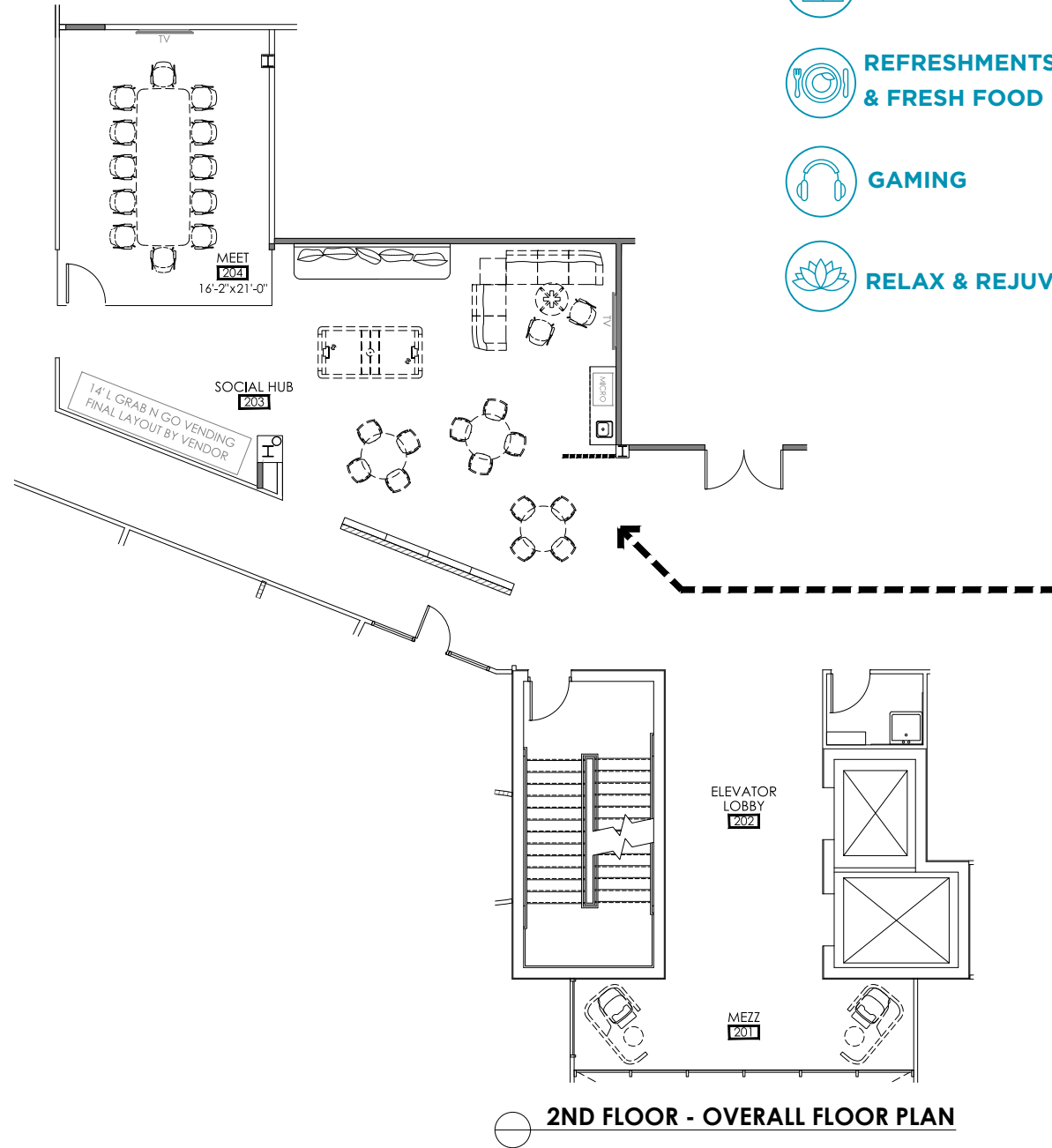
New Center @ Penn tenant lounge & conference facility now complete



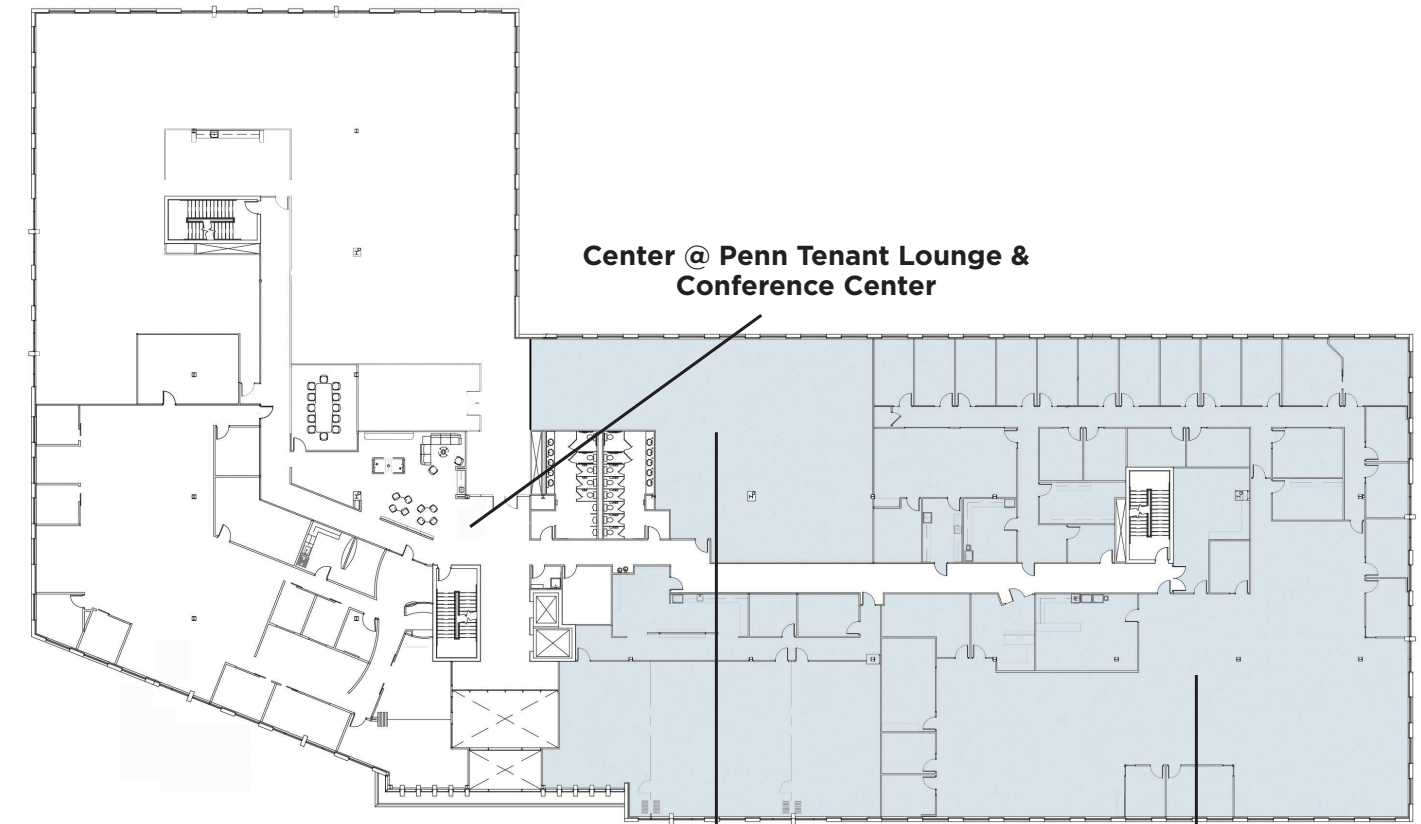
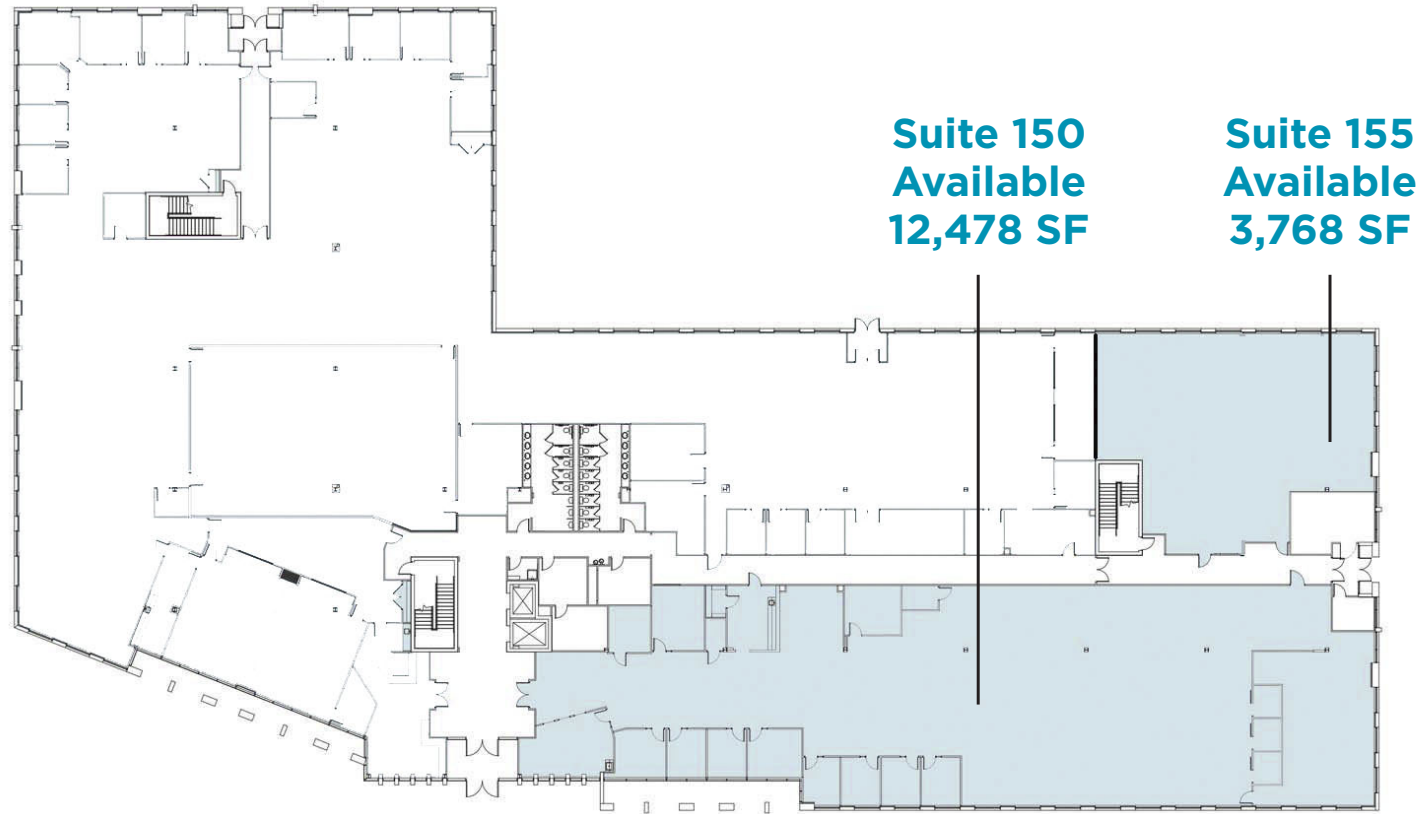
HIGHLIGHTS

Center @ Penn

-  CONFERENCE CENTER
-  REFRESHMENTS & FRESH FOOD
-  GAMING
-  RELAX & REJUVENATE

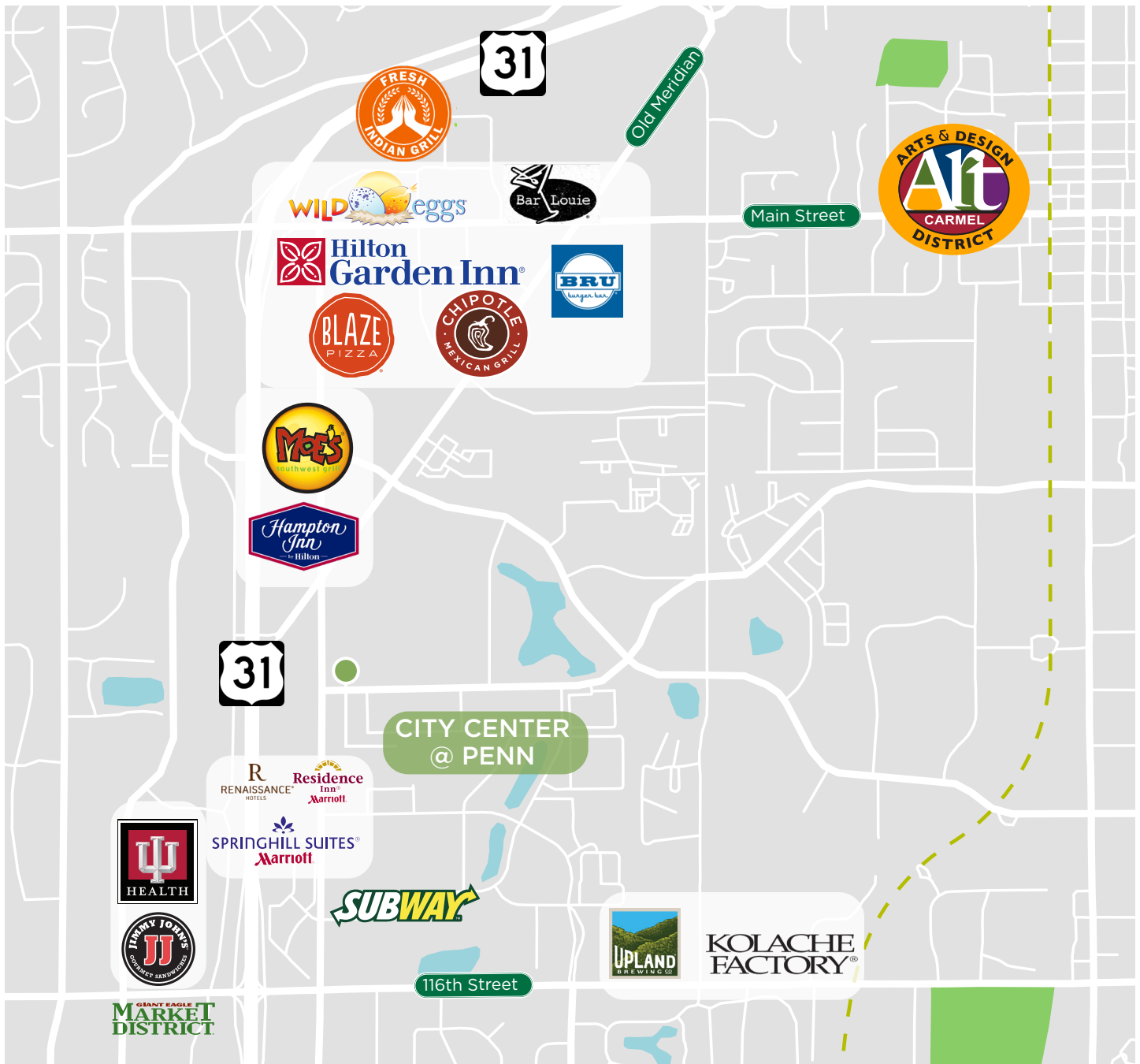


FLOOR PLANS - AVAILABLE SPACES



(Contiguous = 26,203 SF)

LOCATION & AMENITIES



CONTACT

DAVID A. MOORE, SIOR, CCIM
 Managing Director
 +1 317 639 0490
 david.moore@cushwake.com

CityCenter@Penn

©2020 Cushman & Wakefield. All rights reserved. The material in this presentation has been prepared solely for information purposes, and is strictly confidential. Any disclosure, use, copying or circulation of this presentation (or the information contained within it) is strictly prohibited, unless you have obtained Cushman & Wakefield's prior written consent. The views expressed in this presentation are the views of the author and do not necessarily reflect the views of Cushman & Wakefield. Neither this presentation nor any part of it shall form the basis of, or be relied upon in connection with any offer, or act as an inducement to enter into any contract or commitment whatsoever. NO REPRESENTATION OR WARRANTY IS GIVEN, EXPRESS OR IMPLIED, AS TO THE ACCURACY OF THE INFORMATION CONTAINED WITHIN THIS PRESENTATION, AND CUSHMAN & WAKEFIELD IS UNDER NO OBLIGATION TO SUBSEQUENTLY CORRECT IT IN THE EVENT OF ERRORS.

