



# LEE + WHITE

## SITE PLANS & AVAILABLE SPACES

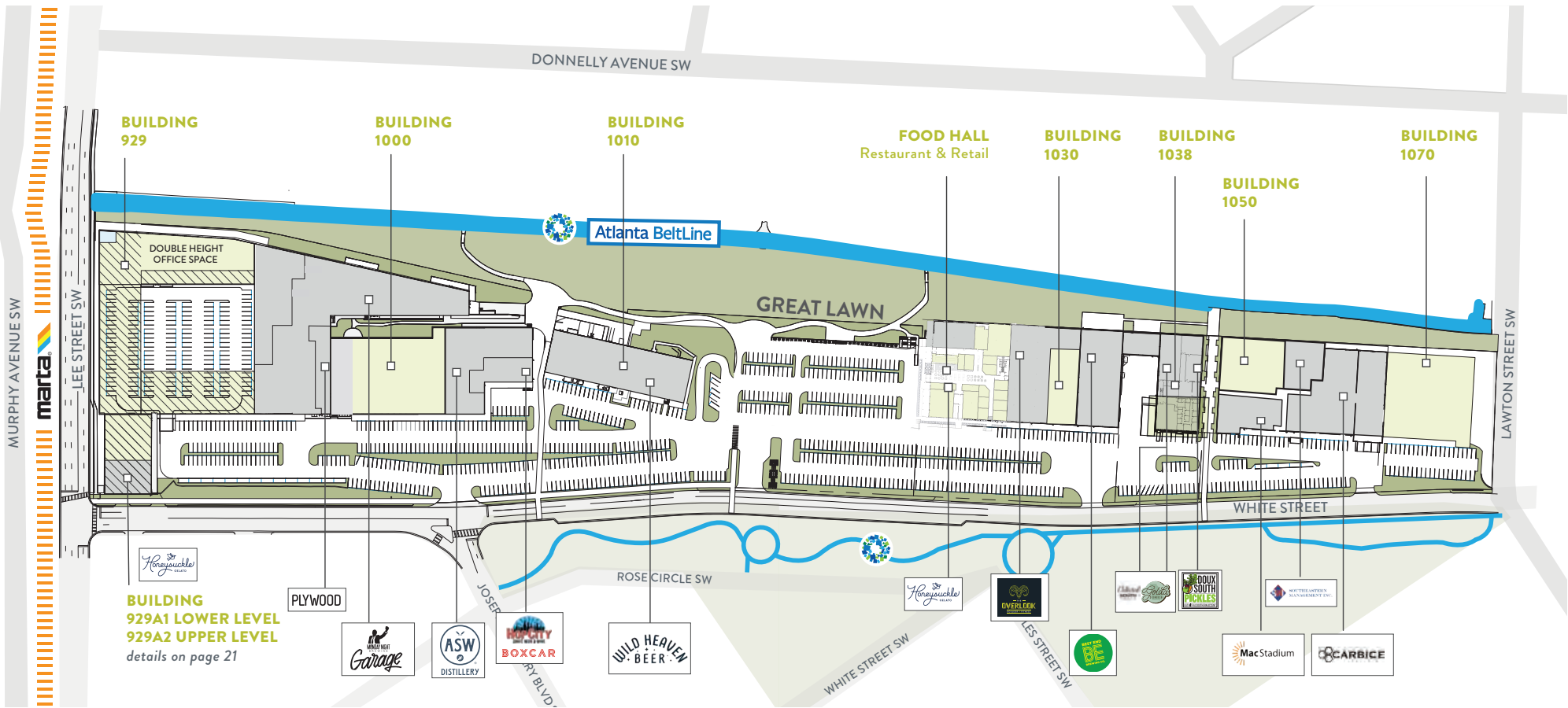
929 LEE STREET + 1000 - 1070 WHITE STREET | ATLANTA, GA 30310 | [LEEANDWHITEATL.COM](http://LEEANDWHITEATL.COM)

Ackerman Retail

CUSHMAN & WAKEFIELD

mdh

# SITE PLAN



Available
  Existing Tenant
  2nd Story Office

AVAILABLE SUITE(S)	929	929 SUITES A1 + A2	1000	FOOD/RETAIL STALLS	RESTAURANTS OR RETAIL	1030 SUITE B	1038 SUITE D	1050	1070
SF	90,097	17,514	31,582	6,399	7,714	4,834	5,016	18,775	30,759

**KELLY WILSON** RETAIL LEASING,  
770.913.3912 | kwilson@ackermanco.net

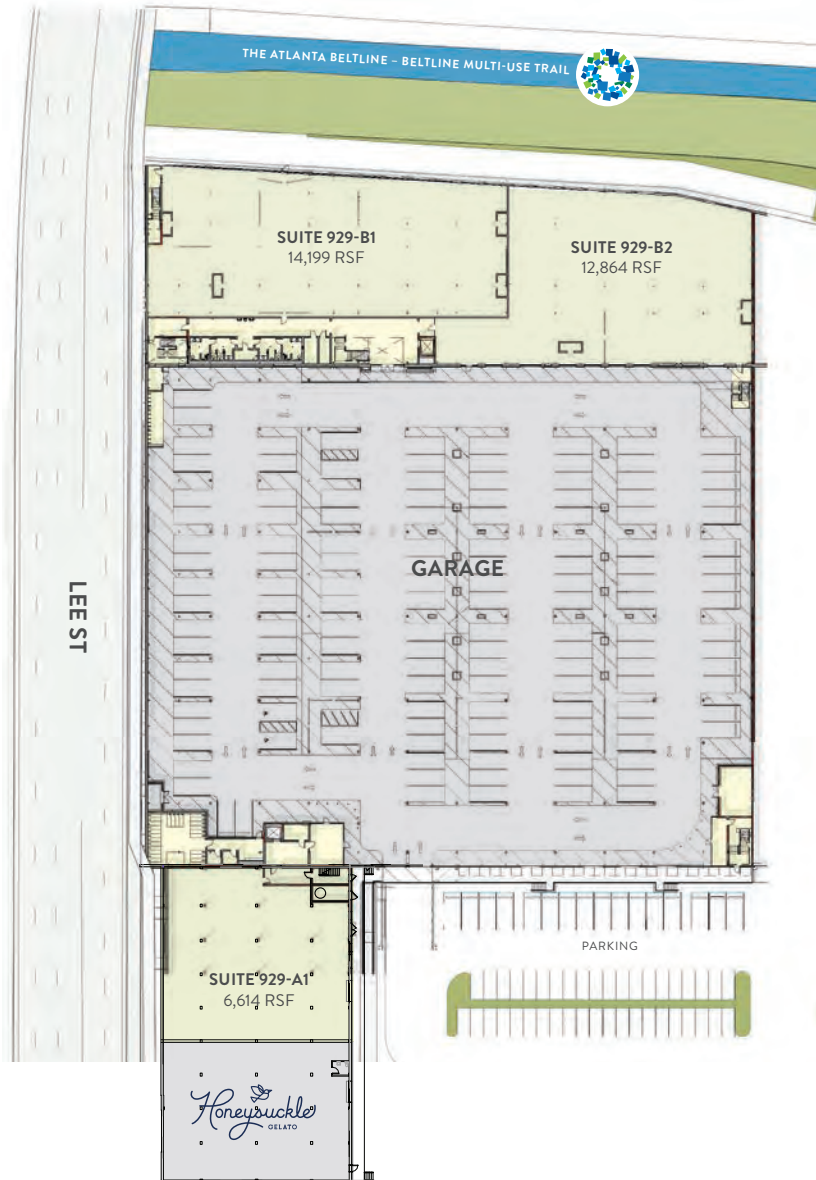
**LEO WIENER** RETAIL LEASING,  
770.913.3930 | lwiener@ackermanco.net

**SONIA WINFIELD** OFFICE LEASING,  
404.682.3431 | sonia.winfield@cushwake.com

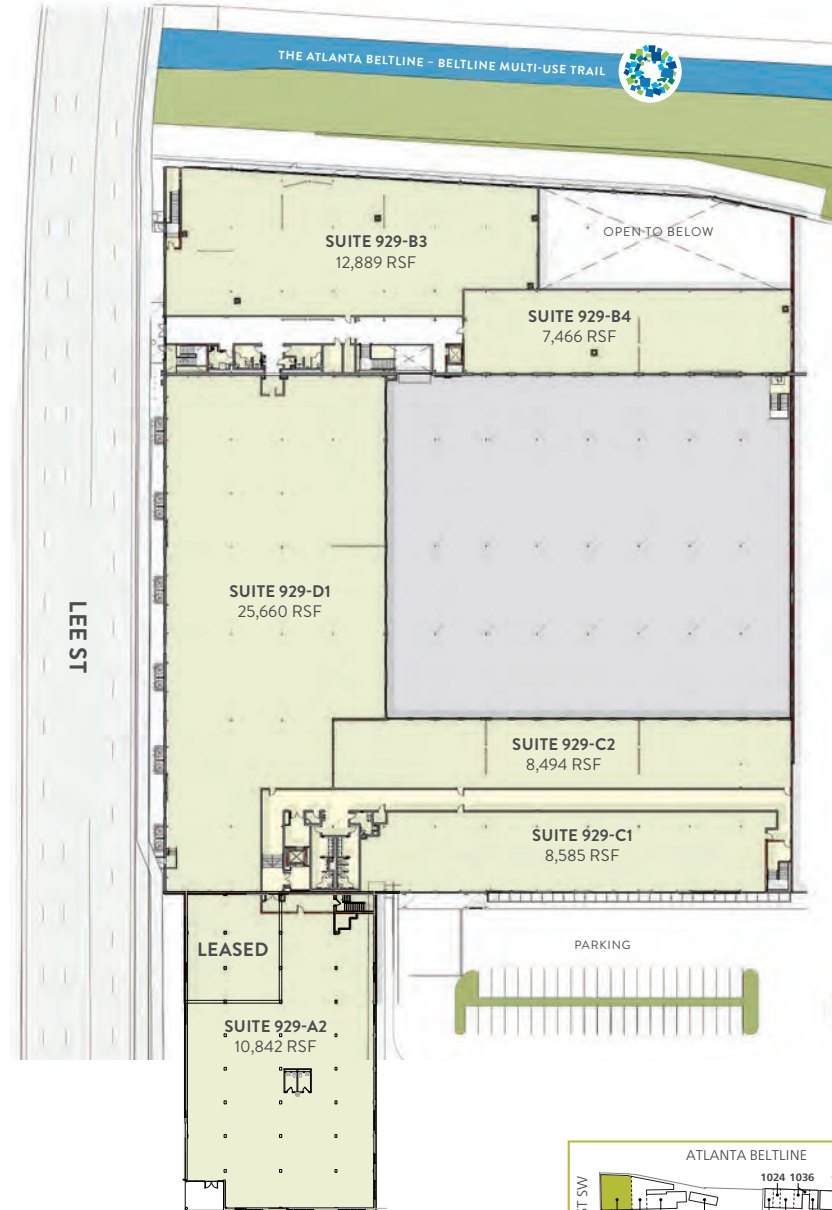
**PORTER HENRITZE** OFFICE LEASING,  
404.853.5255 | porter.henritze@cushwake.com

# 929 BUILDING

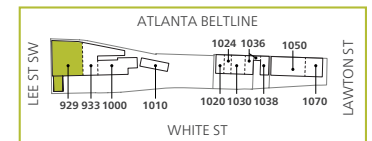
LEVEL 1



LEVEL 2



Available Existing Tenant



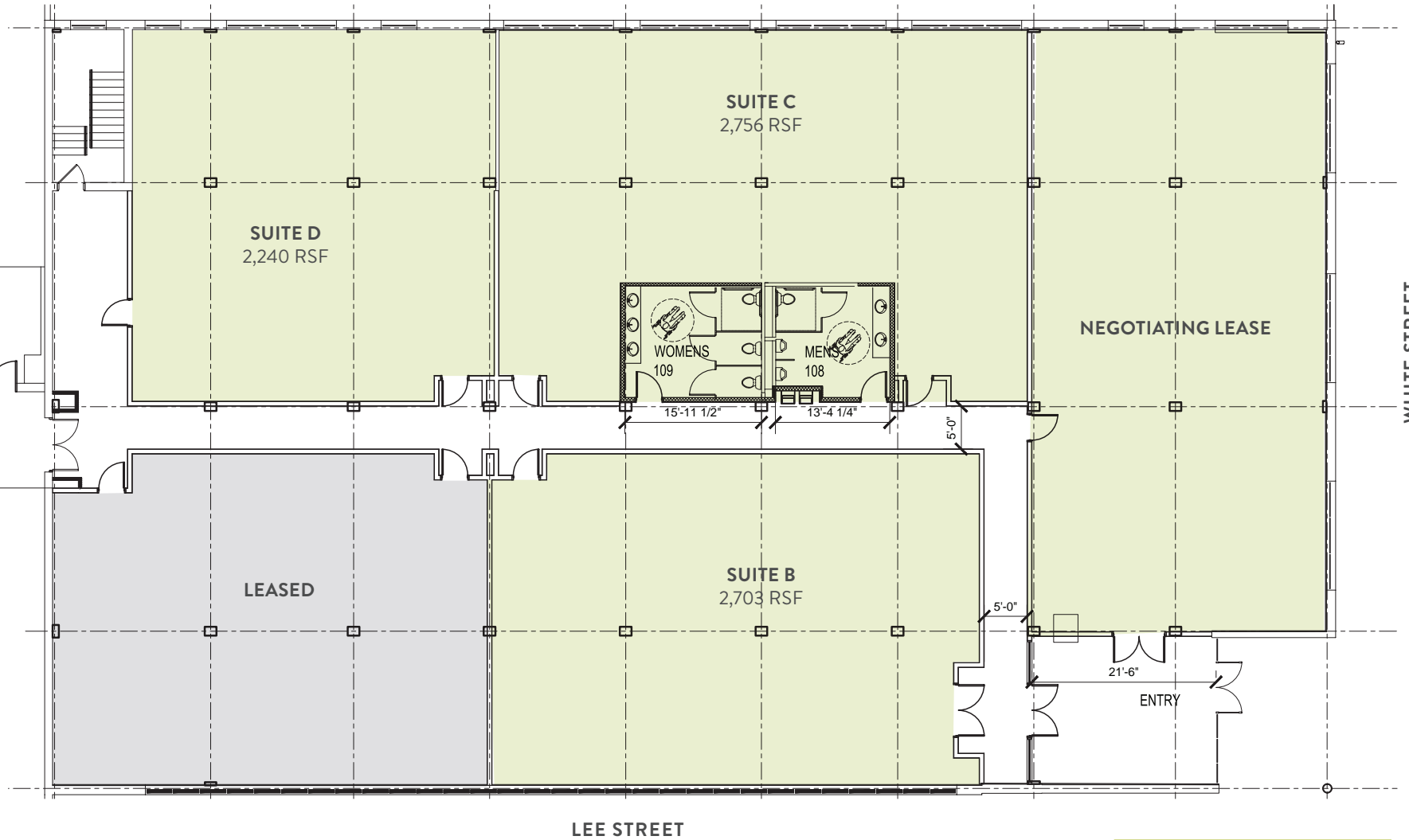
KELLY WILSON RETAIL LEASING,  
770.913.3912 | kwilson@ackermanco.net

LEO WIENER RETAIL LEASING,  
770.913.3930 | lwiener@ackermanco.net

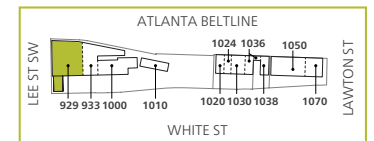
SONIA WINFIELD OFFICE LEASING,  
404.682.3431 | sonia.winfield@cushwake.com

PORTER HENRITZE OFFICE LEASING,  
404.853.5255 | porter.henritze@cushwake.com

PARKING



Available Existing Tenant



**KELLY WILSON** RETAIL LEASING,  
770.913.3912 | kwilson@ackermanco.net

**LEO WIENER** RETAIL LEASING,  
770.913.3930 | lwiener@ackermanco.net

**SONIA WINFIELD** OFFICE LEASING,  
404.682.3431 | sonia.winfield@cushwake.com

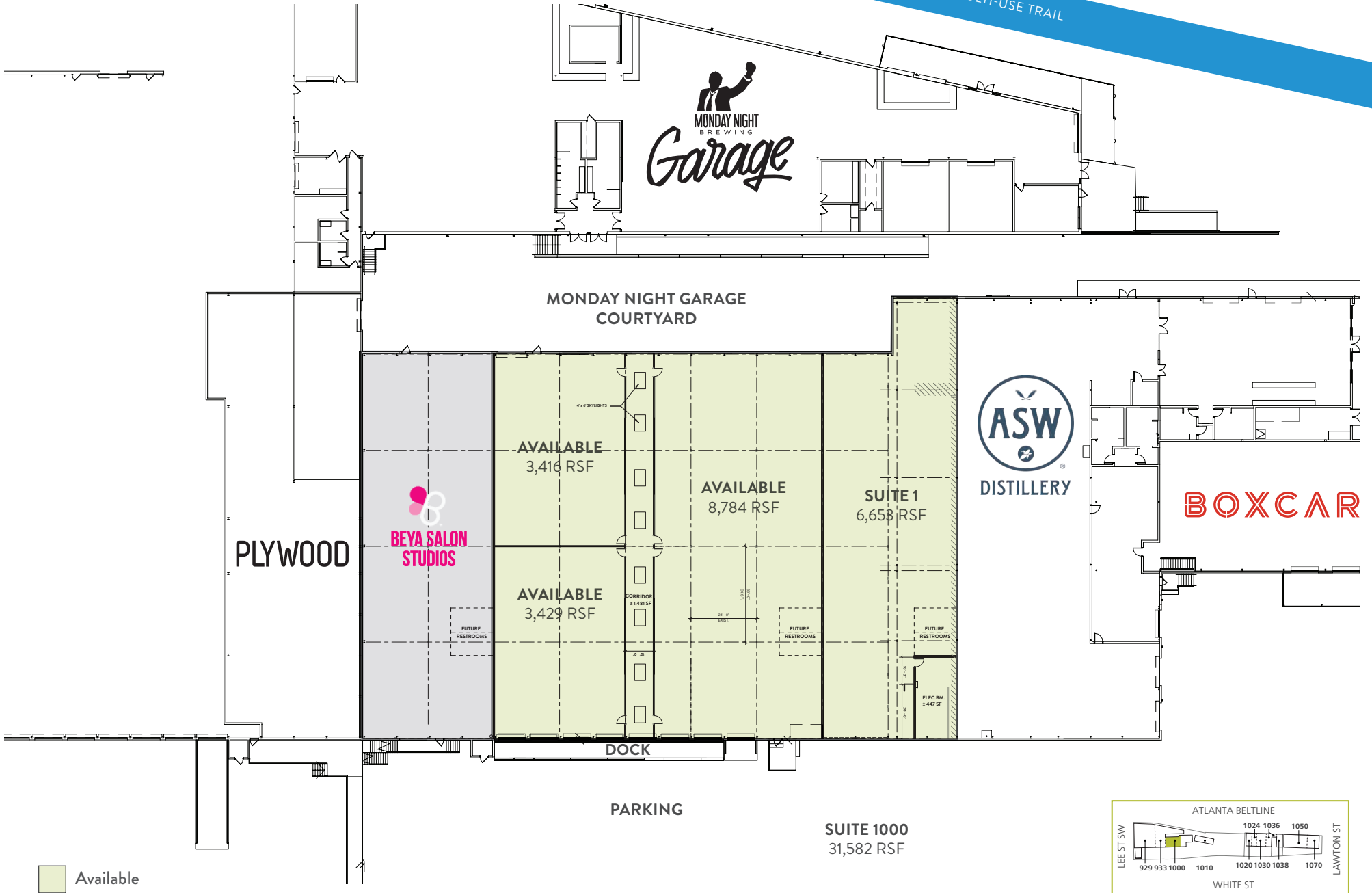
**PORTER HENRITZE** OFFICE LEASING,  
404.853.5255 | porter.henritze@cushwake.com

# 1000 BUILDING

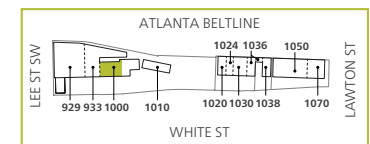


THE ATLANTA BELTLINE - BELTLINE MULTI-USE TRAIL

LEE + WHITE  
929 LEE STREET + 1000 - 1070 WHITE STREET



Available



**KELLY WILSON** RETAIL LEASING,  
770.913.3912 | kwilson@ackermanco.net

**LEO WIENER** RETAIL LEASING,  
770.913.3930 | lwiener@ackermanco.net

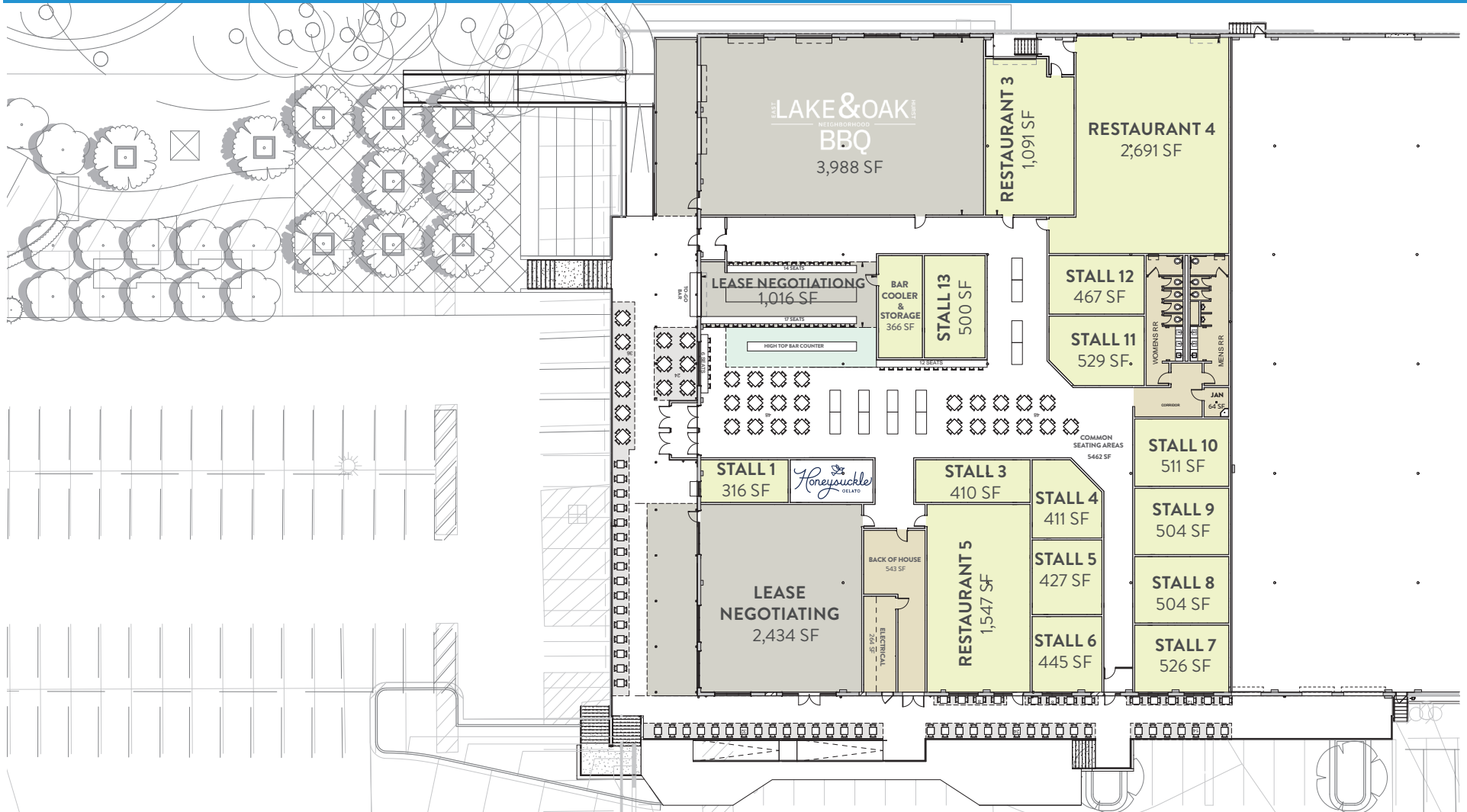
**SONIA WINFIELD** OFFICE LEASING,  
404.682.3431 | sonia.winfield@cushwake.com

**PORTER HENRITZE** OFFICE LEASING,  
404.853.5255 | porter.henritze@cushwake.com

# FOOD HALL



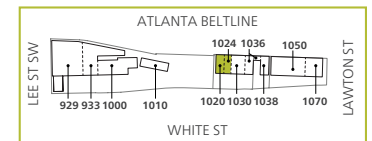
THE ATLANTA BELTLINE - BELTLINE MULTI-USE TRAIL



WHITE STREET

+ More than 875 surface parking spots

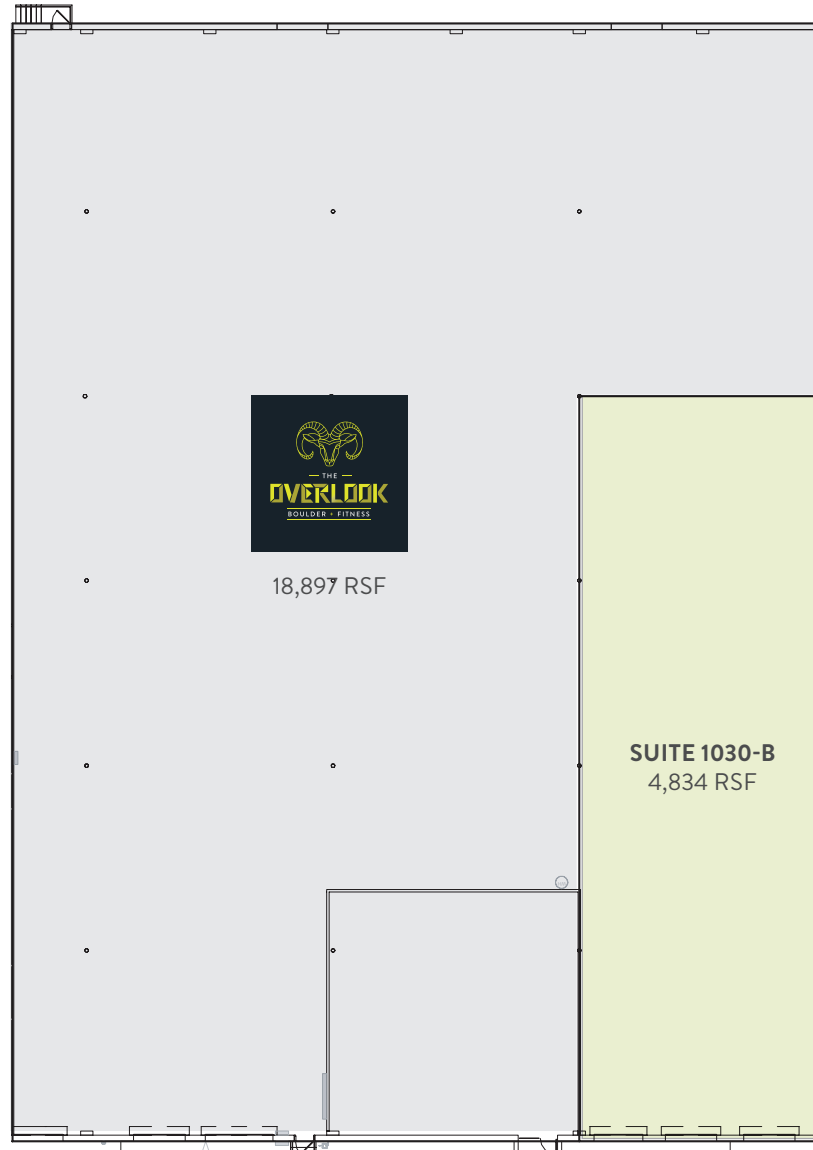
Available Existing Tenant



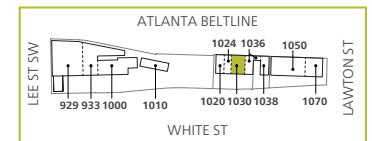
# 1030 BUILDING - SUITE B



THE ATLANTA BELTLINE - BELTLINE MULTI-USE TRAIL



 Available  Existing Tenant



**KELLY WILSON** RETAIL LEASING,  
770.913.3912 | [kwilson@ackermanco.net](mailto:kwilson@ackermanco.net)

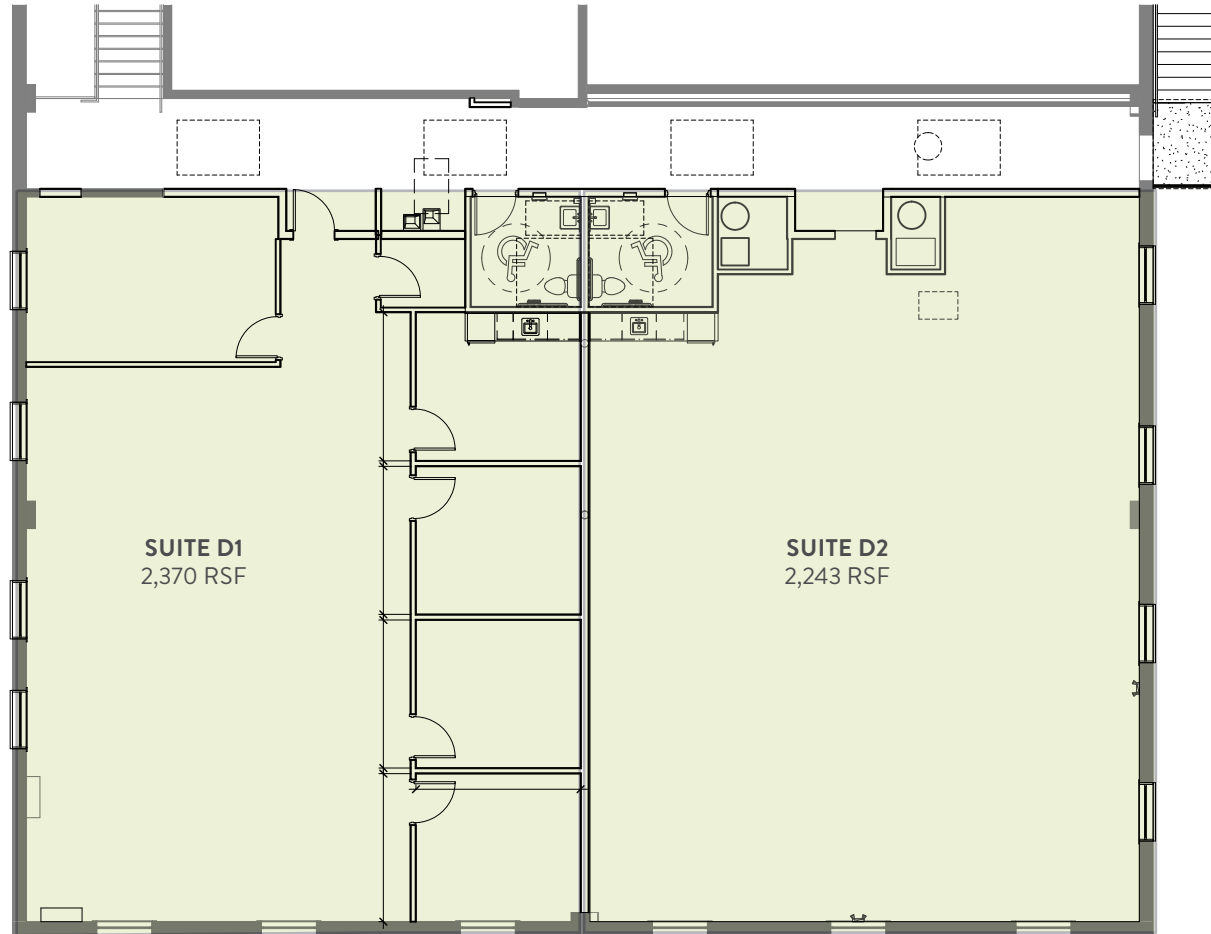
**LEO WIENER** RETAIL LEASING,  
770.913.3930 | [lwiener@ackermanco.net](mailto:lwiener@ackermanco.net)

**SONIA WINFIELD** OFFICE LEASING,  
404.682.3431 | [sonia.winfield@cushwake.com](mailto:sonia.winfield@cushwake.com)

**PORTER HENRITZE** OFFICE LEASING,  
404.853.5255 | [porter.henritze@cushwake.com](mailto:porter.henritze@cushwake.com)

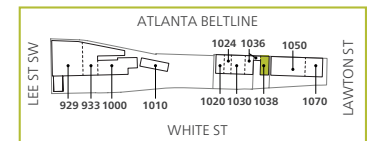


THE ATLANTA BELTLINE - BELTLINE MULTI-USE TRAIL



LEVEL 2

Available Existing Tenant



**KELLY WILSON** RETAIL LEASING,  
770.913.3912 | kwilson@ackermanco.net

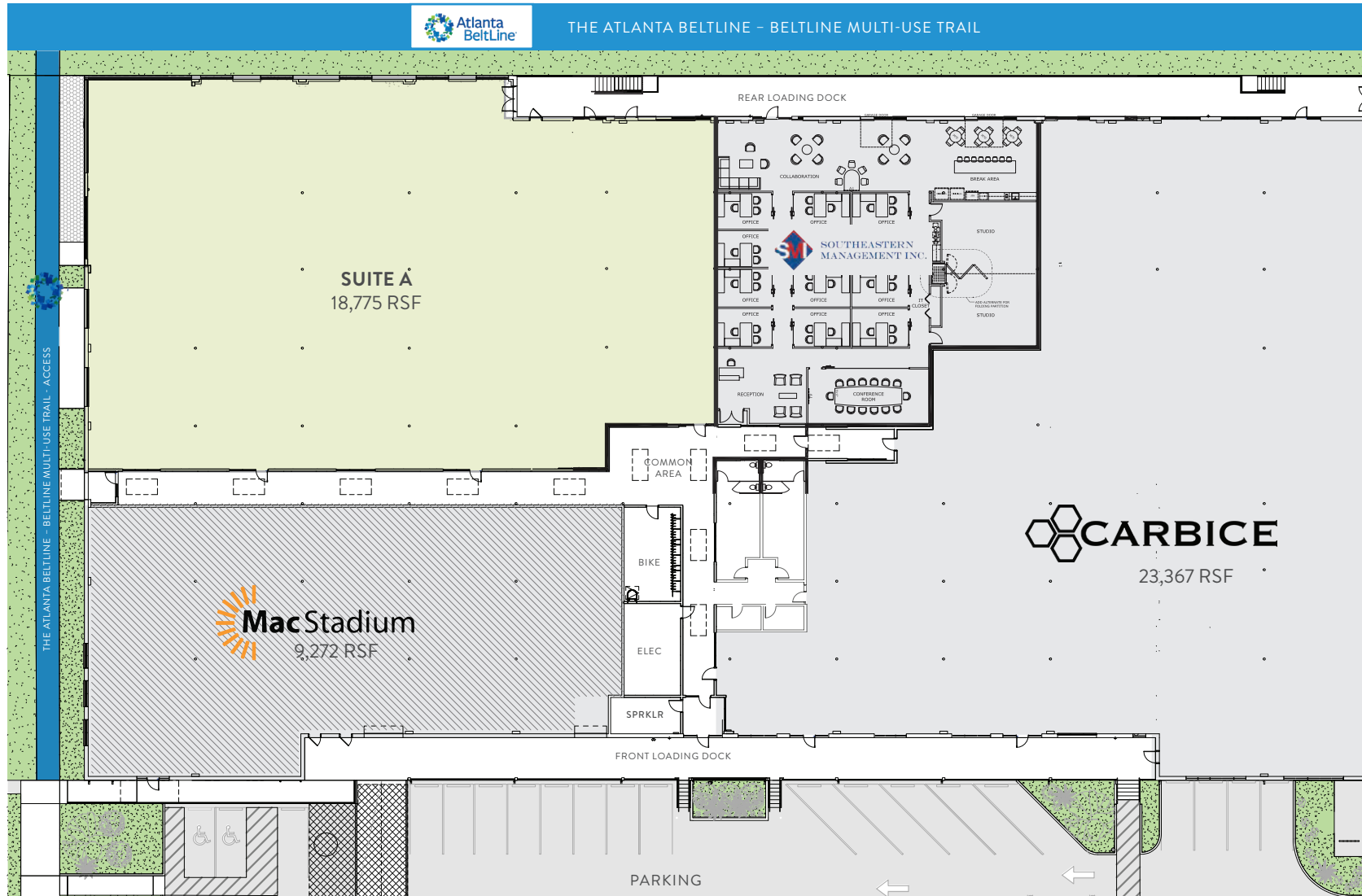
**LEO WIENER** RETAIL LEASING,  
770.913.3930 | lwiener@ackermanco.net

**SONIA WINFIELD** OFFICE LEASING,  
404.682.3431 | sonia.winfield@cushwake.com

**PORTER HENRITZE** OFFICE LEASING,  
404.853.5255 | porter.henritze@cushwake.com

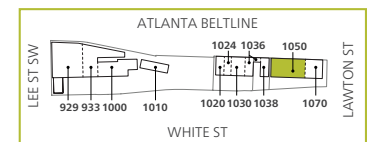


# 1050 BUILDING



+ More than 875 surface parking spots

Available Existing Tenant



KELLY WILSON RETAIL LEASING,  
 770.913.3912 | kwilson@ackermanco.net

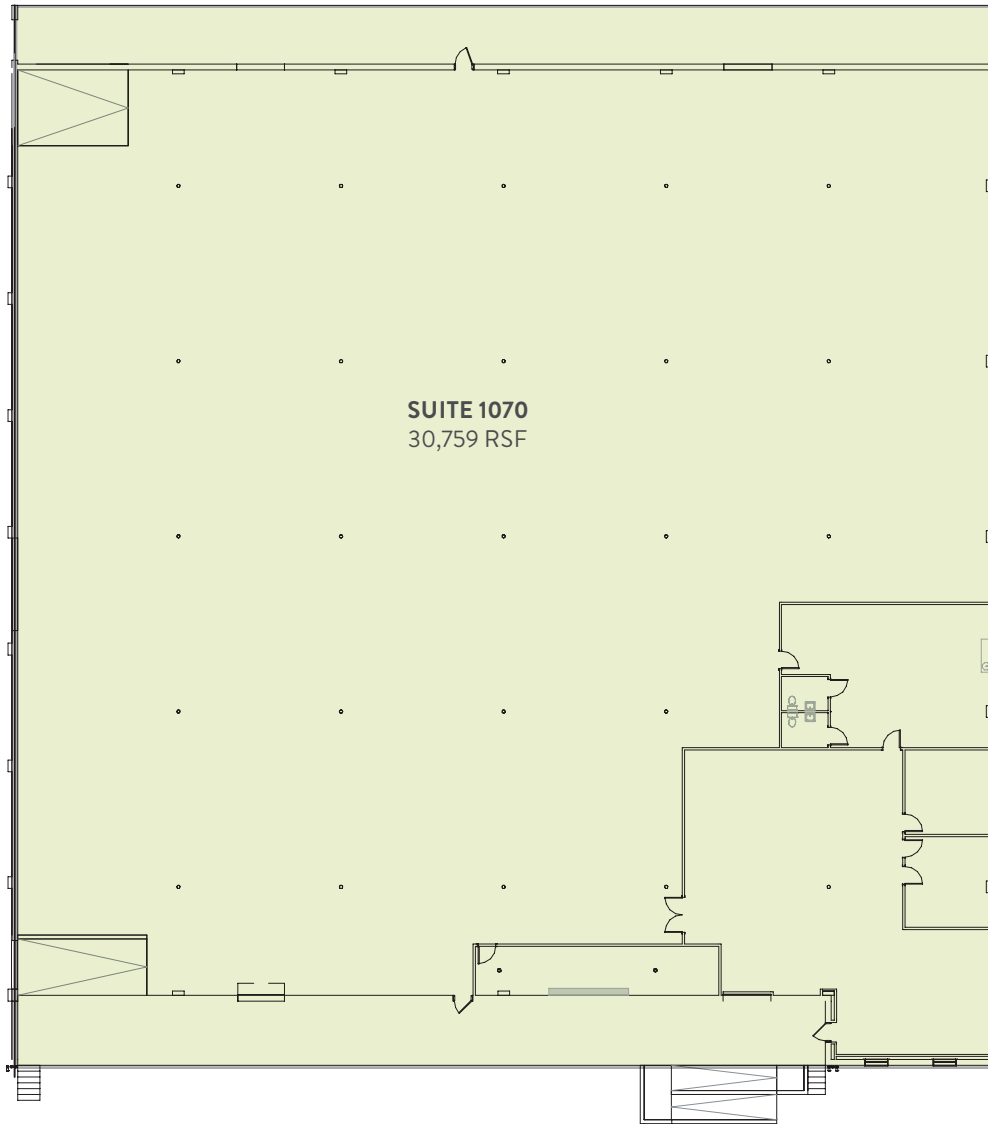
LEO WIENER RETAIL LEASING,  
 770.913.3930 | lwiener@ackermanco.net

SONIA WINFIELD OFFICE LEASING,  
 404.682.3431 | sonia.winfield@cushwake.com

PORTER HENRITZE OFFICE LEASING,  
 404.853.5255 | porter.henritze@cushwake.com

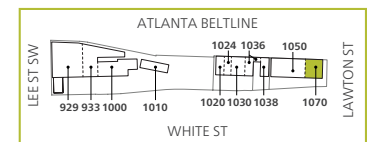


THE ATLANTA BELTLINE - BELTLINE MULTI-USE TRAIL



SUITE 1070  
30,759 RSF

Available Existing Tenant



**KELLY WILSON** RETAIL LEASING,  
770.913.3912 | kwilson@ackermanco.net

**LEO WIENER** RETAIL LEASING,  
770.913.3930 | lwiener@ackermanco.net

**SONIA WINFIELD** OFFICE LEASING,  
404.682.3431 | sonia.winfield@cushwake.com

**PORTER HENRITZE** OFFICE LEASING,  
404.853.5255 | porter.henritze@cushwake.com