

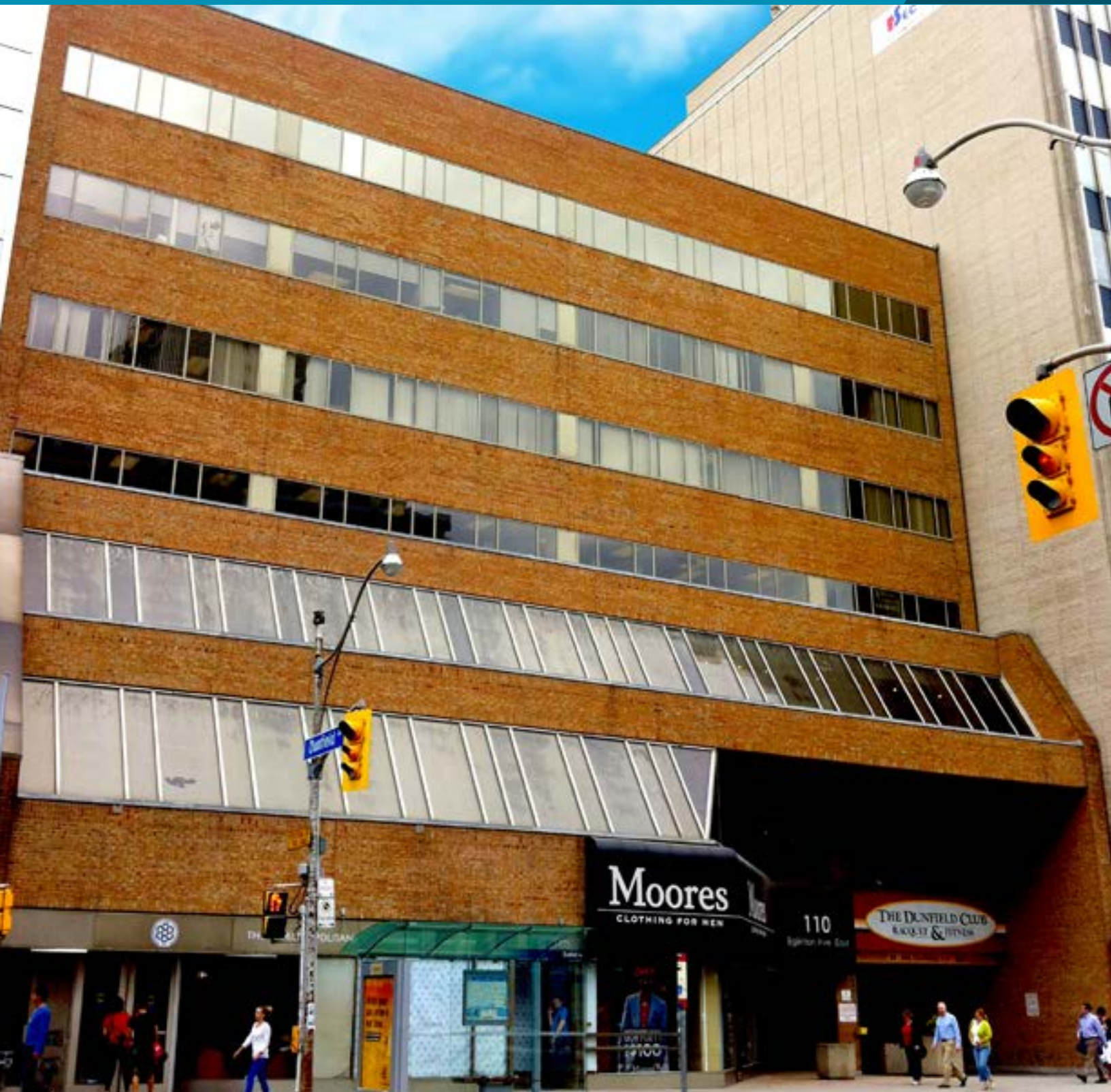


**CUSHMAN &  
WAKEFIELD**

OFFICE FOR LEASE

**110 EGLINTON AVENUE EAST**

Toronto, ON



**LOCATED IN THE HEART OF MIDTOWN TORONTO**

OFFICE FOR LEASE  
**110 EGLINTON AVENUE EAST**

Toronto, ON



## PROPERTY SUMMARY

110 Eglinton Avenue East is located on the north side of Eglinton Avenue East, just east of Yonge Street in the heart of Midtown Toronto. The Yonge/Eglinton area is one of Toronto's main interchanges and as such, shopping, dining and other amenities are plentiful. Public transit is located steps away from the building.

## HIGHLIGHTS

- Superior landlord; committed to providing tenants with excellent service, quality and value
- Steps from Yonge & Eglinton: restaurants, entertainment, shopping and TTC
- Parking: Ratio—1:1,850 SF @ \$175/month per stall

## DETAILS

<b>ASKING RATE</b>	\$14.00 PSF	<b>REALTY TAXES</b>	\$5.70
<b>ADDITIONAL RATE</b>	\$21.21 PSF (est. 2019)	<b>OPERATING COSTS</b>	\$15.51
<b>TERM</b>	Negotiable	<b>TOTAL</b>	\$21.21
<b>OCCUPANCY</b>	Immediate		
<b>AVAILABLE SPACE</b>	Suite 503: 2,840 SF		
	<del>Suite 602: 5,248 SF</del> <b>LEASED</b>		



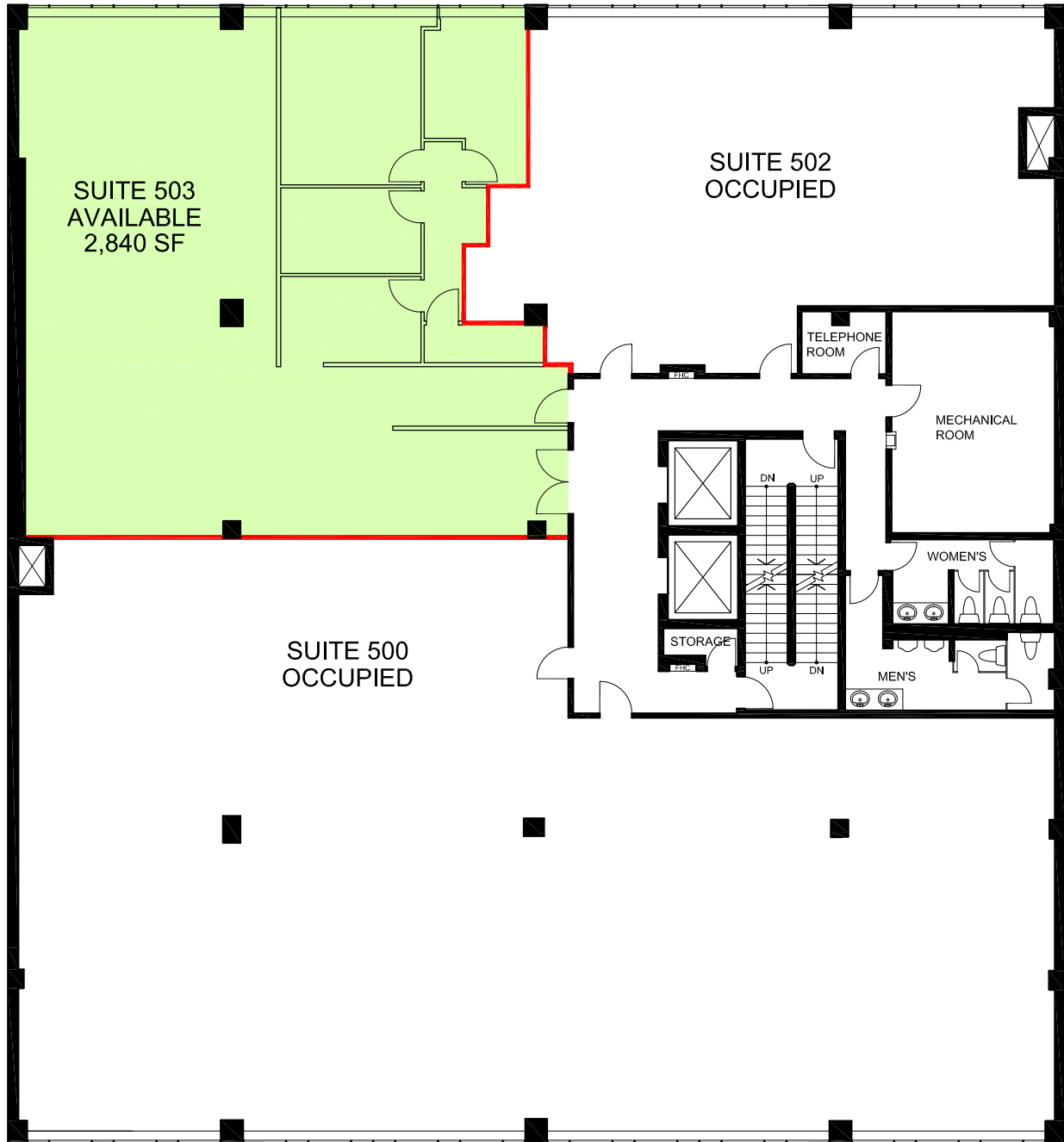
OFFICE FOR LEASE  
**110 EGLINTON AVENUE EAST**

Toronto, ON



**FLOOR PLANS**

**SUITE 503 | 2,840 SF**



OFFICE FOR LEASE  
**110 EGLINTON AVENUE EAST**

Toronto, ON



## FOR MORE INFORMATION, PLEASE CONTACT:

**Cushman & Wakefield ULC, Brokerage**

161 Bay Street, Suite 1500  
P.O. Box 602 | Toronto, ON M5J 2S1  
[cushmanwakefield.com](http://cushmanwakefield.com)

**TONY HAMILTON\***

Vice President

416 359 2412

[tony.hamilton@cushwake.com](mailto:tony.hamilton@cushwake.com)

Cushman & Wakefield ULC, Brokerage

No warranty or representation, expressed or implied, is made as to the accuracy of the information contained herein, and same is submitted subject to errors, omissions, change of price, rental or other conditions, withdrawal without notice, and to any specific listing condition, imposed by our principals.

\* Sales Representative