



**CUSHMAN &
WAKEFIELD**

FOR LEASE

30 E. 4th Avenue

San Mateo, California

±2,740 SF DOWNTOWN SAN MATEO OFFICE



±2,740 SF OFFICE SPACE IN DOWNTOWN SAN MATEO

Property Highlights

- Heart of Downtown San Mateo
- Great Visibility
- Located Doors Away from Starbucks, Equinox, Noah's Bagels and Many Other Fabulous Amenities
- High Tech/High End Improvements
- Private Entrance
- Parking Available Adjacent to Building
- New Modern Lighting
- Polished Concrete

Clarke Funkhouser

Senior Managing Director
+1 650 401 2124
clarke.funkhouser@cushwake.com
LIC #01252763

Shannon Chircop

Director
+1 650 931 2228
shannon.chircop@cushwake.com
LIC #01872259

1350 Bayshore Hwy., Suite 900
Burlingame, CA
main +1 650 347 3700
fax +1 650 347 4307
cushmanwakefield.com

[View Site Specific COVID-19 Prevention Plan](#)

Cushman & Wakefield Copyright 2020. No warranty or representation, express or implied, is made to the accuracy or completeness of the information contained herein, and same is submitted subject to errors, omissions, change of price, rental or other conditions, withdrawal without notice, and to any special listing conditions imposed by the property owner(s). As applicable, we make no representation as to the condition of the property (or properties) in question.



**CUSHMAN &
WAKEFIELD**

FOR LEASE

30 E. 4th Avenue

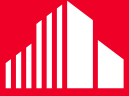
San Mateo, California



Clarke Funkhouser
Senior Managing Director
+1 650 401 2124
clarke.funkhouser@cushwake.com
LIC #01252763

Shannon Chircop
Director
+1 650 931 2228
shannon.chircop@cushwake.com
LIC #01872259

1350 Bayshore Hwy., Suite 900
Burlingame, CA
main +1 650 347 3700
fax +1 650 347 4307
cushmanwakefield.com



**CUSHMAN &
WAKEFIELD**

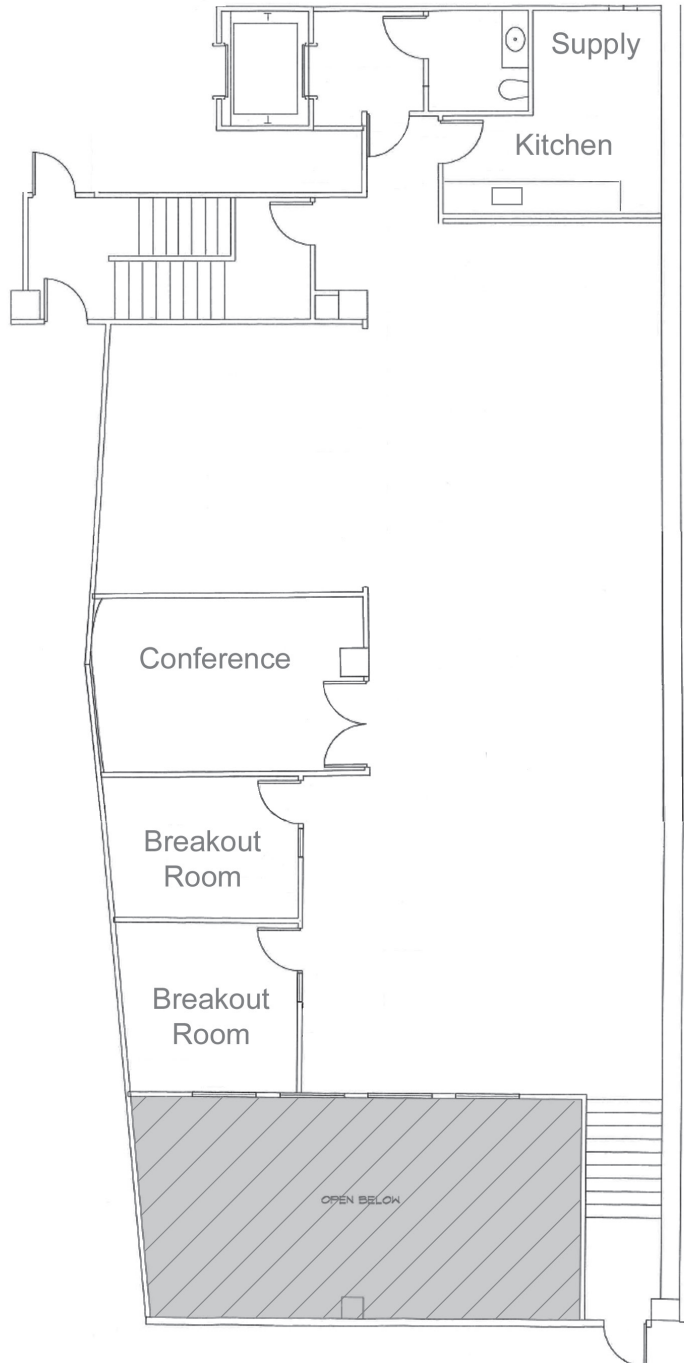
FOR LEASE

30 E. 4th Avenue

San Mateo, California

30 E. 4th Avenue - Floor Plan

±2,740 SF



Clarke Funkhouser
Senior Managing Director
+1 650 401 2124
clarke.funkhouser@cushwake.com
LIC #01252763

Shannon Chircop
Director
+1 650 931 2228
shannon.chircop@cushwake.com
LIC #01872259

1350 Bayshore Hwy., Suite 900
Burlingame, CA
main +1 650 347 3700
fax +1 650 347 4307
cushmanwakefield.com