

# CAMPBELL

## TECHNOLOGY PARK

±6,811 SF TO ±52,669 SF  
OFFICE / R&D FOR LEASE

**LIAM MARTIN**  
+1 408 436 3619  
liam.martin@cushwake.com  
LIC #02081625

**STEVE PACE**  
+1 408 482 7037  
steve.pace@cushwake.com  
LIC #00817396

**DAN HOLLINGSWORTH**  
+1 408 615 3431  
dan.hollingsworth@cushwake.com  
LIC #01117716



# SITE PLAN





# CAMPBELL

## TECHNOLOGY PARK

### PROJECT HIGHLIGHTS

#### ±6,811 SF TO ±52,669 SF OFFICE / R&D FOR LEASE

- High Image Corporate Office/R&D Park
- Full Building Potentially Available
- Desirable West Valley location
- High-End Market Ready Interiors
- 3.8/1,000 Parking
- Grade and Dock Loading
- Adjacent to 4 Acre Community Park
- Par Course Jogging Trail Around Perimeter of Project
- Showers Available
- Call to Tour

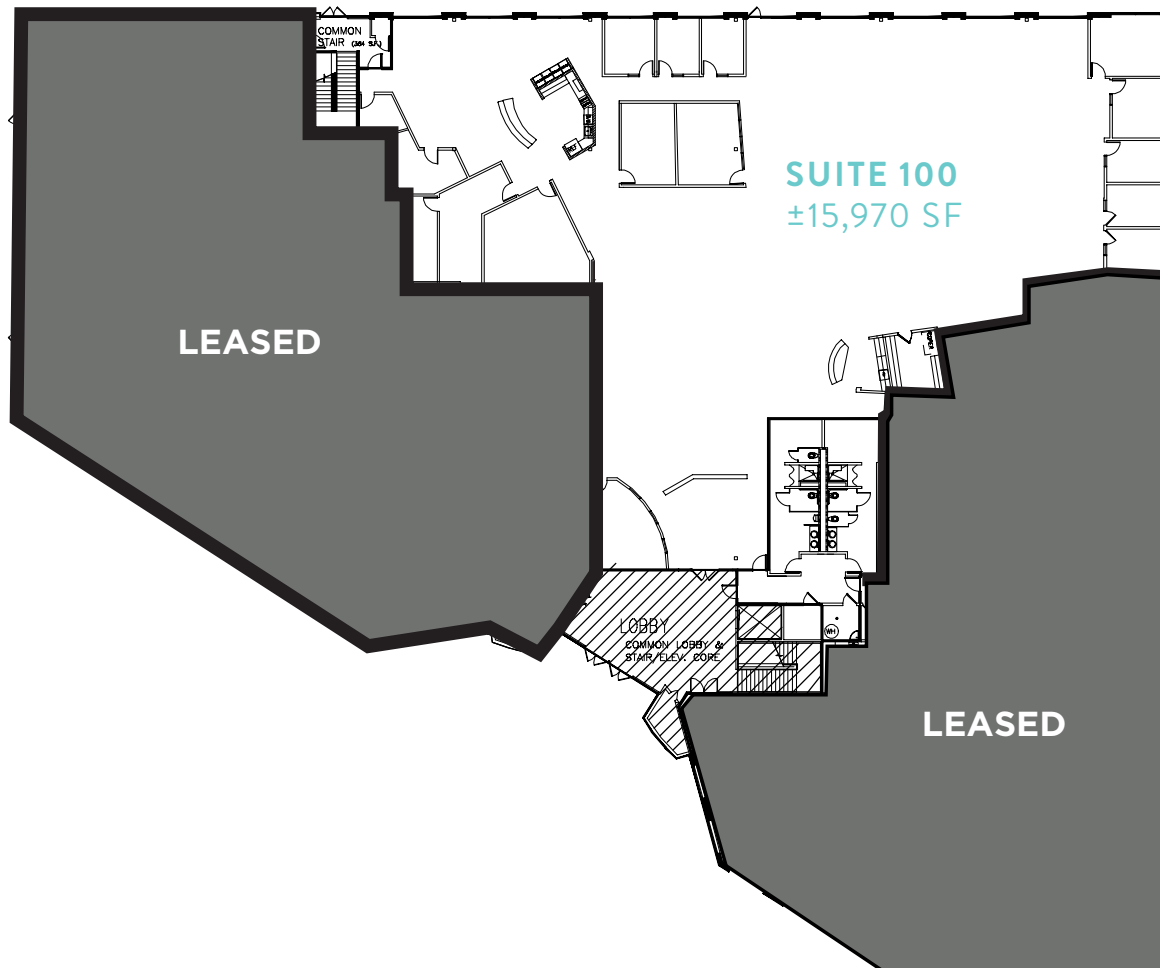
[VIEW SITE SPECIFIC COVID-19 PREVENTION PLAN](#)

©2020 Cushman & Wakefield. All rights reserved. The information contained in this communication is strictly confidential. This information has been obtained from sources believed to be reliable but has not been verified. NO WARRANTY OR REPRESENTATION, EXPRESS OR IMPLIED, IS MADE AS TO THE CONDITION OF THE PROPERTY (OR PROPERTIES) REFERENCED HEREIN OR AS TO THE ACCURACY OR COMPLETENESS OF THE INFORMATION CONTAINED HEREIN, AND SAME IS SUBMITTED SUBJECT TO ERRORS, OMISSIONS, CHANGE OF PRICE, RENTAL OR OTHER CONDITIONS, WITHDRAWAL WITHOUT NOTICE, AND TO ANY SPECIAL LISTING CONDITIONS IMPOSED BY THE PROPERTY OWNER(S). ANY PROJECTIONS, OPINIONS OR ESTIMATES ARE SUBJECT TO UNCERTAINTY AND DO NOT SIGNIFY CURRENT OR FUTURE PROPERTY PERFORMANCE.

# FLOOR PLAN

655 CAMPBELL TECHNOLOGY PARKWAY

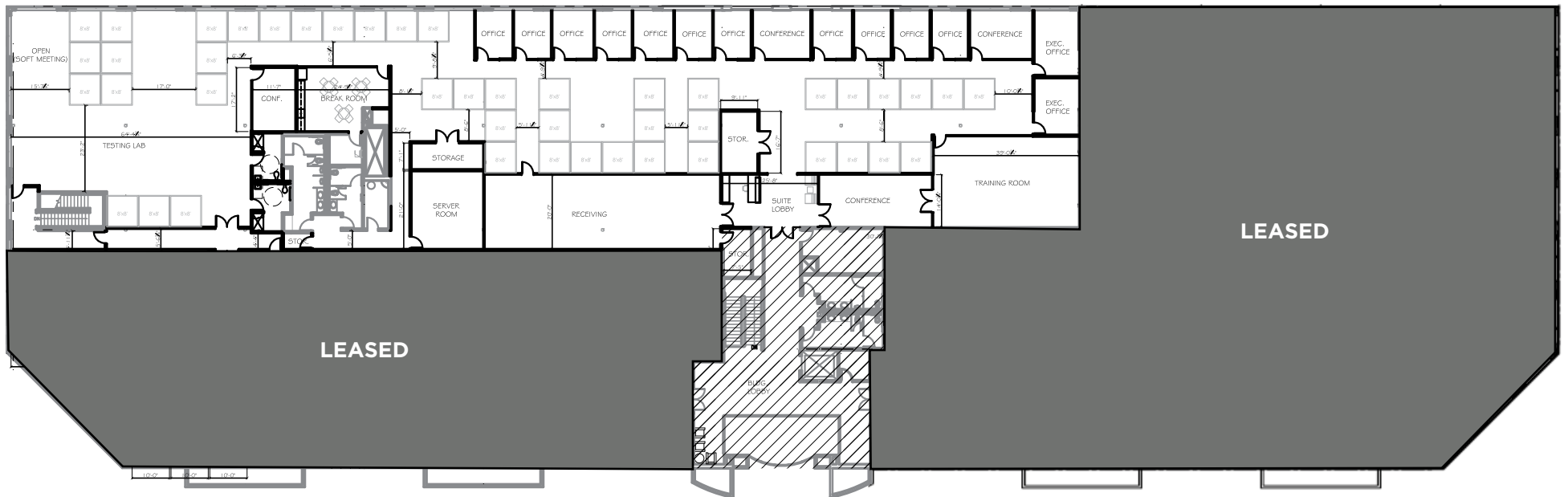
FIRST FLOOR: ±15,970 SF



# FLOOR PLAN

675 CAMPBELL TECHNOLOGY PARKWAY

SECOND FLOOR - SUITE 200: ±19,866 SF

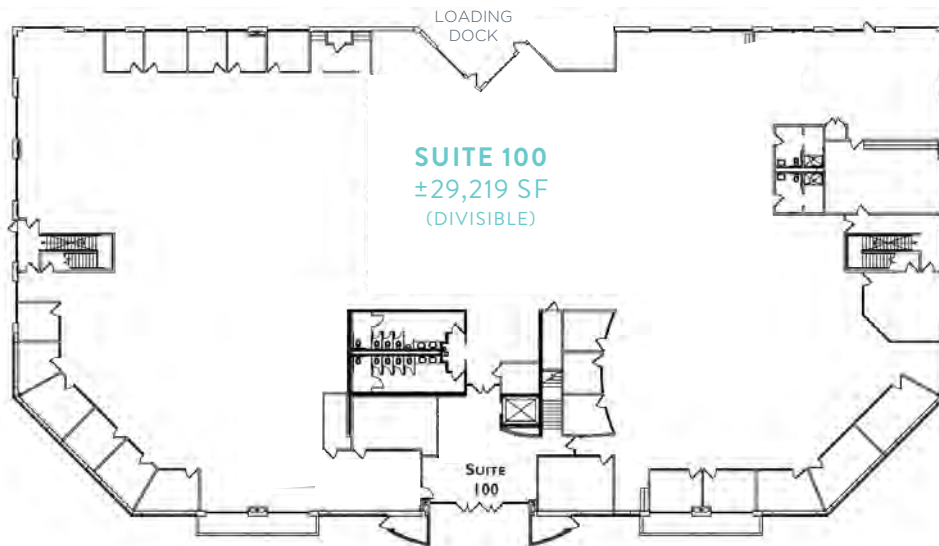


# FLOOR PLAN

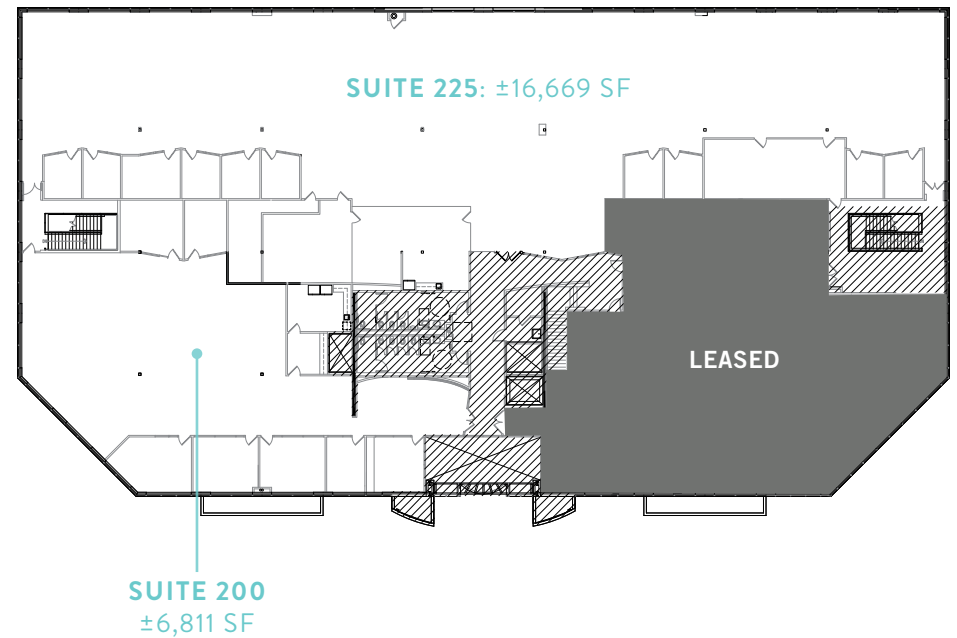
695 CAMPBELL TECHNOLOGY PARKWAY

±52,699 SF AVAILABLE  
CALL FOR FULL BUILDING

FIRST FLOOR: ±29,219 SF (DIVISIBLE)



SECOND FLOOR: ±23,480 SF (DIVISIBLE TO ±6,811 SF)









# CAMPBELL

TECHNOLOGY PARK



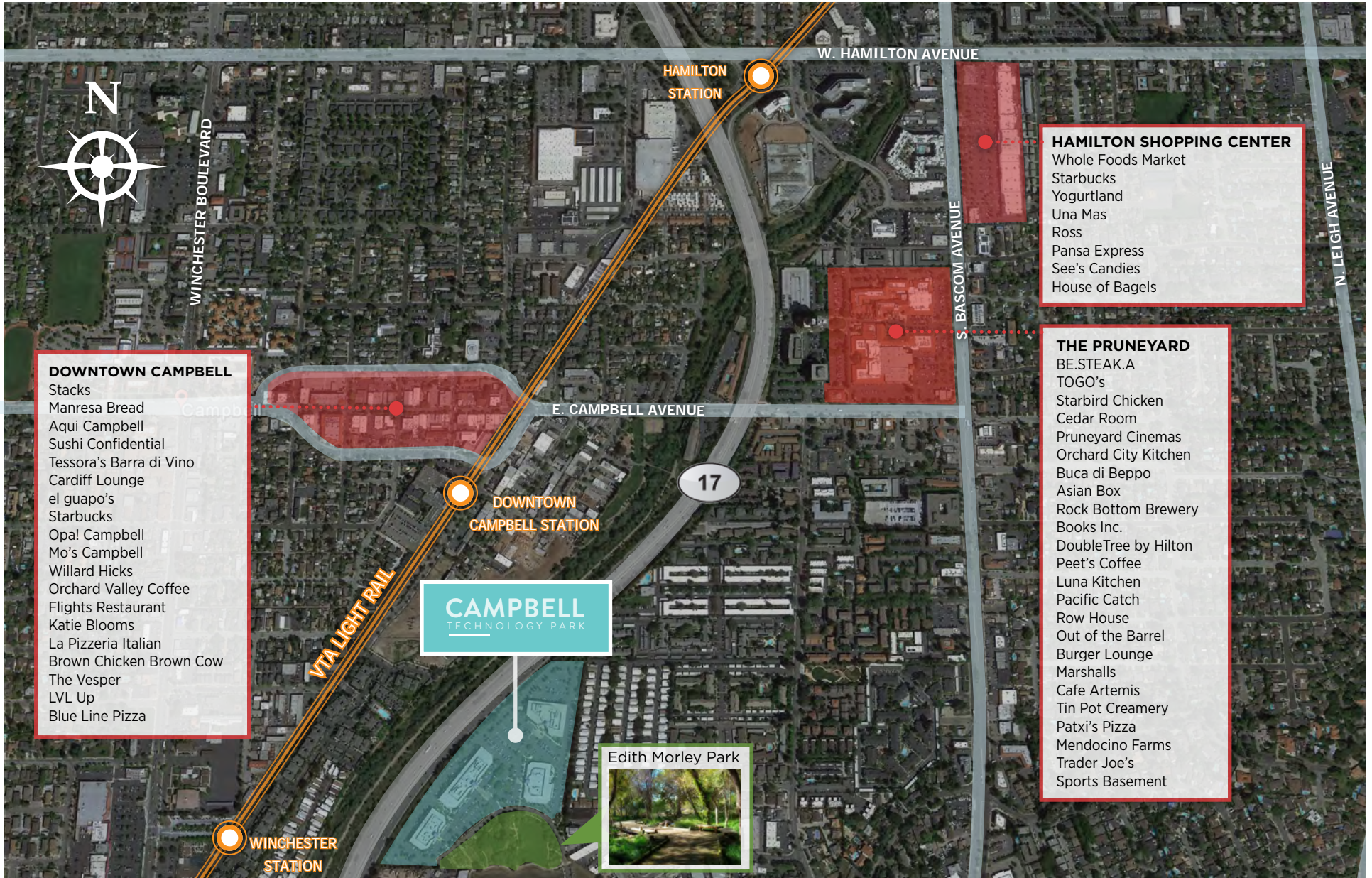
ACROSS THE STREET  
FROM EDITH MORELY  
PARK

---





# TRANSPORTATION & AMENITIES



- DOWNTOWN CAMPBELL**
- Stacks
  - Manresa Bread
  - Aqui Campbell
  - Sushi Confidential
  - Tessoro's Barra di Vino
  - Cardiff Lounge
  - el guapo's
  - Starbucks
  - Opa! Campbell
  - Mo's Campbell
  - Willard Hicks
  - Orchard Valley Coffee
  - Flights Restaurant
  - Katie Blooms
  - La Pizzeria Italian
  - Brown Chicken Brown Cow
  - The Vesper
  - LVL Up
  - Blue Line Pizza

- HAMILTON SHOPPING CENTER**
- Whole Foods Market
  - Starbucks
  - Yogurtland
  - Una Mas
  - Ross
  - Pansa Express
  - See's Candies
  - House of Bagels

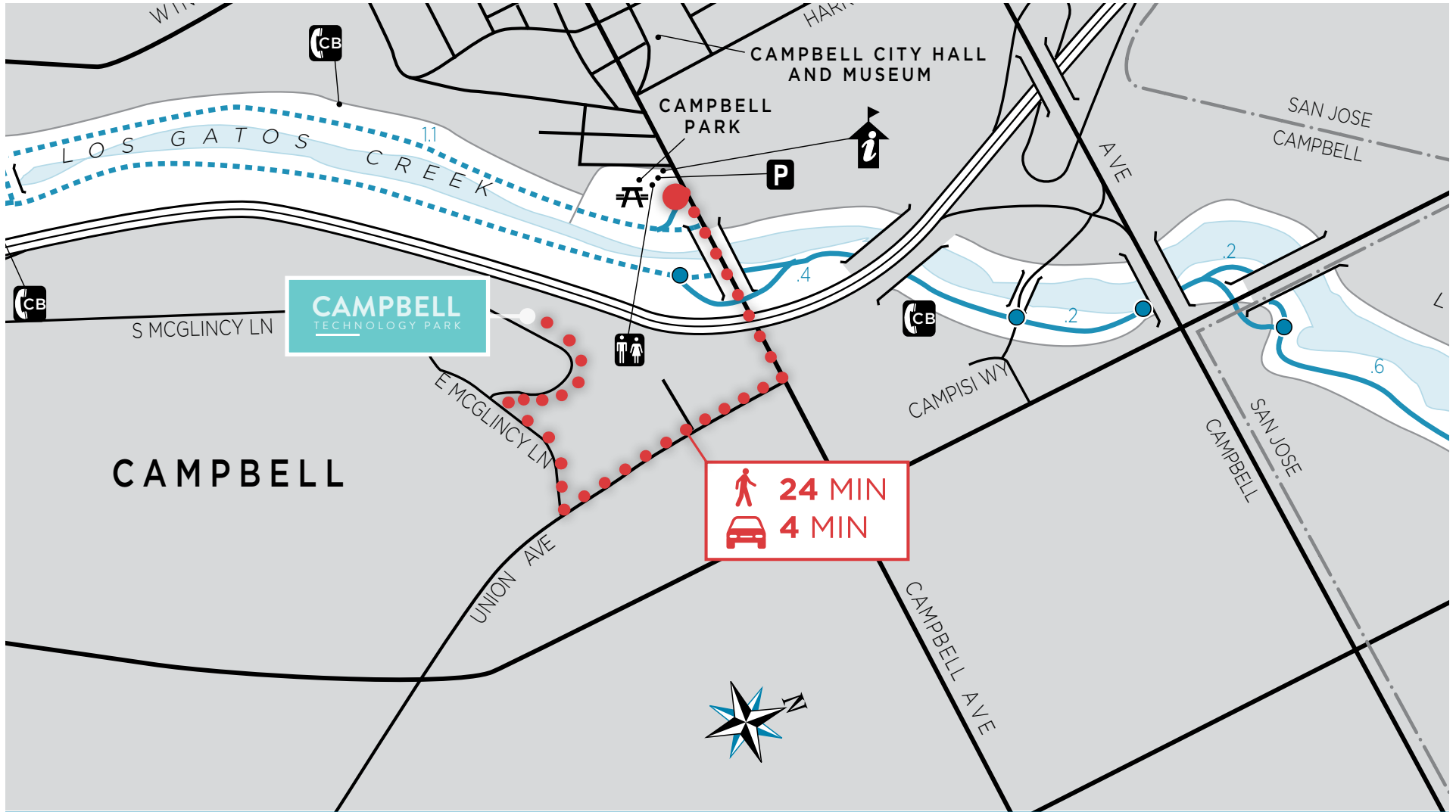
- THE PRUNEYARD**
- BE.STEAK.A
  - TOGO's
  - Starbird Chicken
  - Cedar Room
  - Pruneyard Cinemas
  - Orchard City Kitchen
  - Buca di Beppo
  - Asian Box
  - Rock Bottom Brewery
  - Books Inc.
  - DoubleTree by Hilton
  - Pee't's Coffee
  - Luna Kitchen
  - Pacific Catch
  - Row House
  - Out of the Barrel
  - Burger Lounge
  - Marshalls
  - Cafe Artemis
  - Tin Pot Creamery
  - Patxi's Pizza
  - Mendocino Farms
  - Trader Joe's
  - Sports Basement



**CAMPBELL**  
TECHNOLOGY PARK



# TRANSPORTATION & AMENITIES



- |   |                                 |   |                      |   |                     |   |                          |
|---|---------------------------------|---|----------------------|---|---------------------|---|--------------------------|
|  | Park Entrance Kiosk/Information |  | Call Box             |  | Picnic Area         |  | Paved Multiple Use Trail |
|  | Restrooms                       |  | Parking/Trail Access |  | Two Lane Paved Road |  | PAR Course               |