



# FOR LEASE

Park 100 | Building 118  
5273-5307 Lakeview Parkway S. Drive  
Indianapolis, Indiana

W. 71st Street

Lakeview Pkwy S. Drive

33,200 SF

## Property Features



36,472 SF building size



4.49 acres total site size



Ample car parking



Nearby amenities



Common picnic area



## Current Availabilities

Suite 5273 - 8,125 SF

Suite 5285 - 10,040 SF

Suite 5293 - 3,319 SF

Suite 5297 - 4,177 SF [VIRTUAL TOUR](#)

Suite 5303 - 7,539 SF [VIRTUAL TOUR](#)

Suites 5273-5303 = 33,200 SF

Owned By



Ed Beehner  
Mapletree Investments  
+1 312 761 9477  
ed.beehner@mapletree.com.sg

Leased By



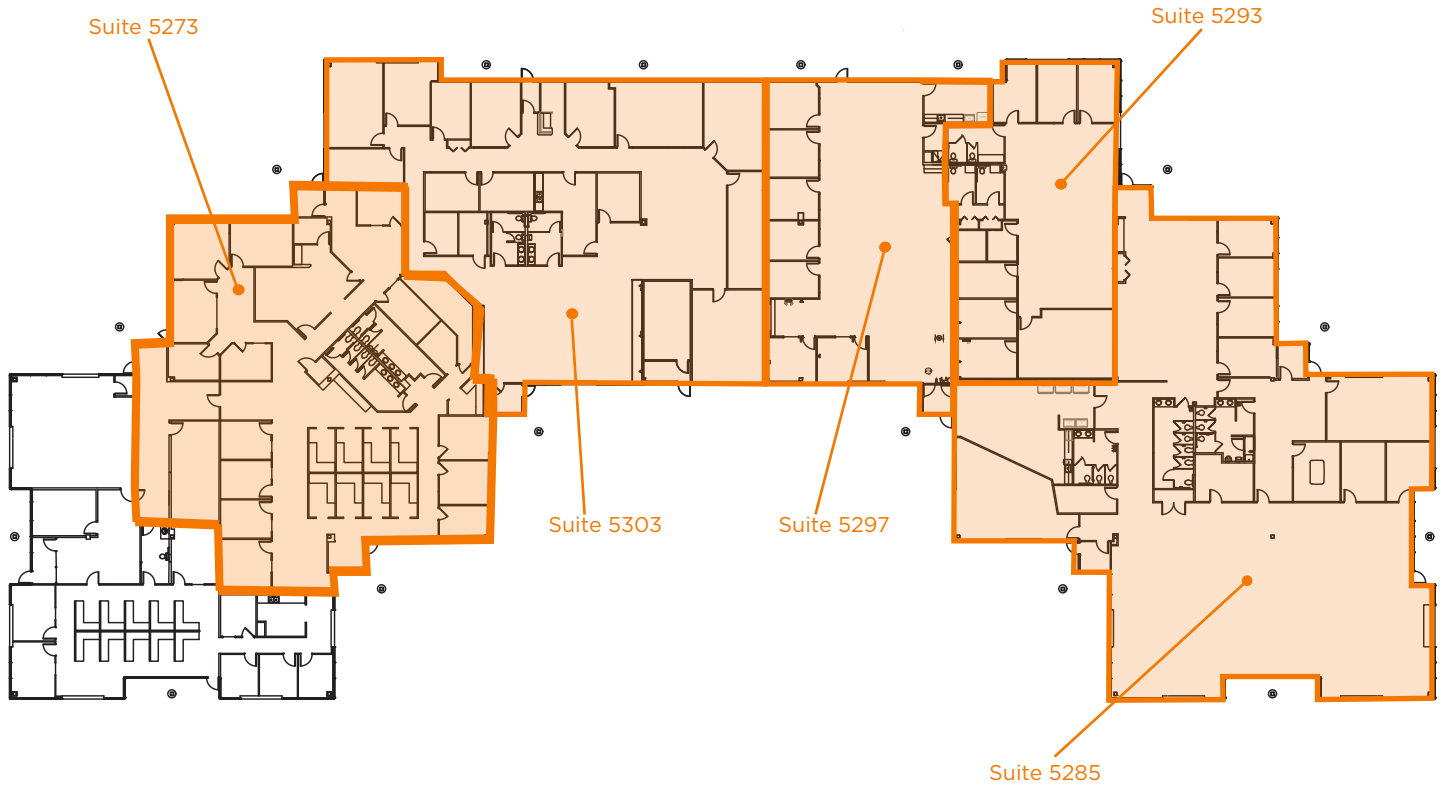
Kevin Archer  
Senior Director  
+1 317 218 7217  
kevin.archer@cushwake.com

Joshua Graham  
Director  
+1 317 639 0491  
joshua.graham@cushwake.com

Jon R. Owens, SIOR  
Managing Director  
+1 317 639 0447  
jon.owens@cushwake.com

# 5273-5307 LAKEVIEW PARKWAY S. DRIVE

## SITE PLAN



## Current Availabilities

### Suite 5273

- >>> 8,125 SF available
- >>> 100% office

### Suite 5285

- >>> 10,040 SF available
- >>> 100% office

### Suite 5293

- >>> 3,319 SF available
- >>> 100% office

### Suite 5297

- >>> 4,177 SF available
- >>> 100% office

### Suite 5303

- >>> 7,539 SF available
- >>> 100% office

### Suites 5273-5303

- >>> 33,200 SF available

Owned By

**mapletree**

Ed Beehner  
Mapletree Investments  
+1 312 761 9477  
ed.beehner@mapletree.com.sg

Leased By

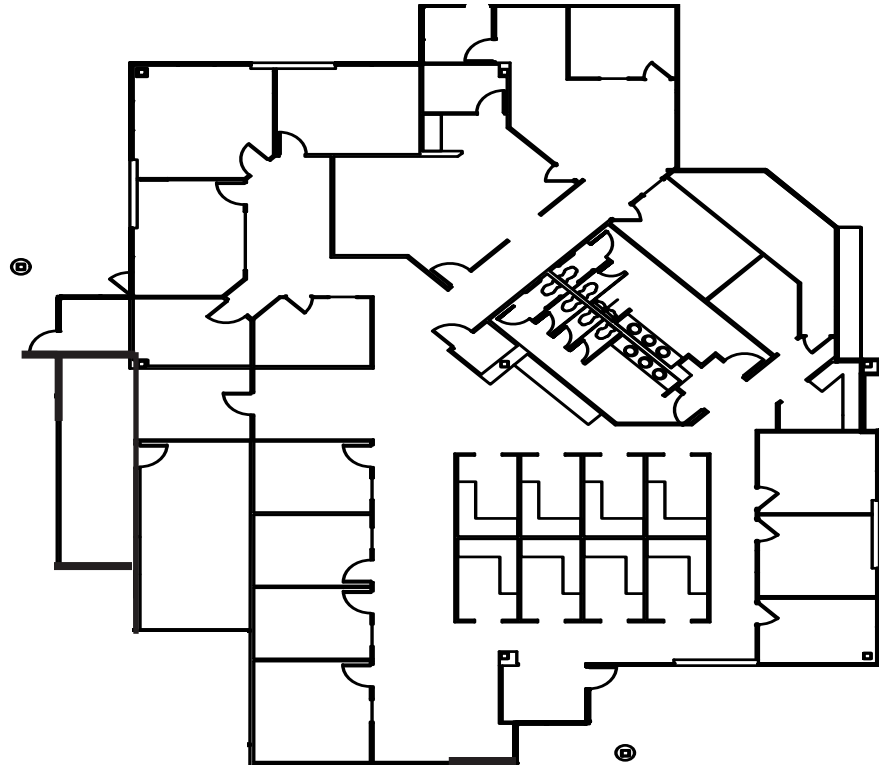
**CUSHMAN & WAKEFIELD**

Kevin Archer  
Senior Director  
+1 317 218 7217  
kevin.archer@cushwake.com

Joshua Graham  
Director  
+1 317 639 0491  
joshua.graham@cushwake.com

Jon R. Owens, SIOR  
Managing Director  
+1 317 639 0447  
jon.owens@cushwake.com

5273-5307 LAKEVIEW PARKWAY S. DRIVE  
**SUITE 5273 - 8,125 SF**



>>> 8,125 SF available

>>> 100% office available

Owned By

**mapletree**

Ed Beehner  
Mapletree Investments  
+1 312 761 9477  
ed.beehner@mapletree.com.sg

Leased By

 **CUSHMAN & WAKEFIELD**

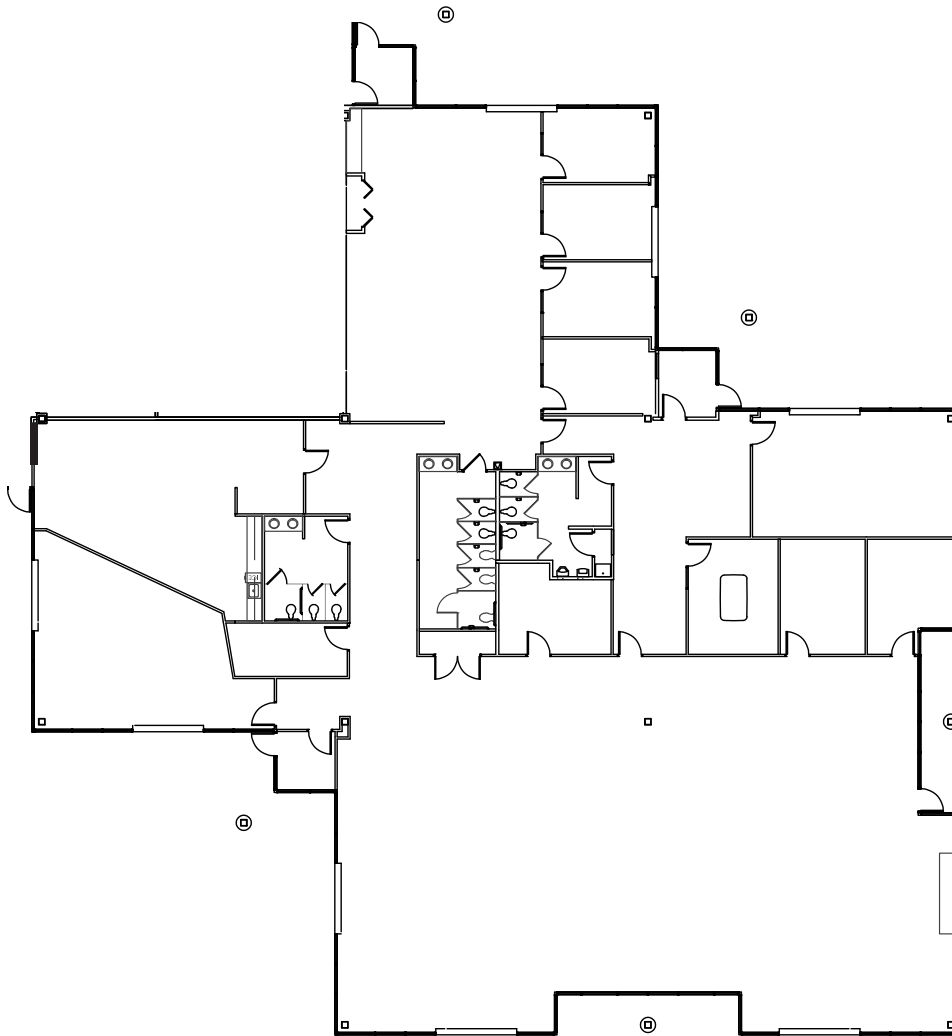
Kevin Archer  
Senior Director  
+1 317 218 7217  
kevin.archer@cushwake.com

Joshua Graham  
Director  
+1 317 639 0491  
joshua.graham@cushwake.com

Jon R. Owens, SIOR  
Managing Director  
+1 317 639 0447  
jon.owens@cushwake.com

# 5273-5307 LAKEVIEW PARKWAY S. DRIVE

## SUITE 5285 - 10,040 SF



>>> 10,040 SF available

>>> 100% office available

Owned By

**mapletree**

Ed Beehner  
Mapletree Investments  
+1 312 761 9477  
ed.beehner@mapletree.com.sg

Leased By

 **CUSHMAN & WAKEFIELD**

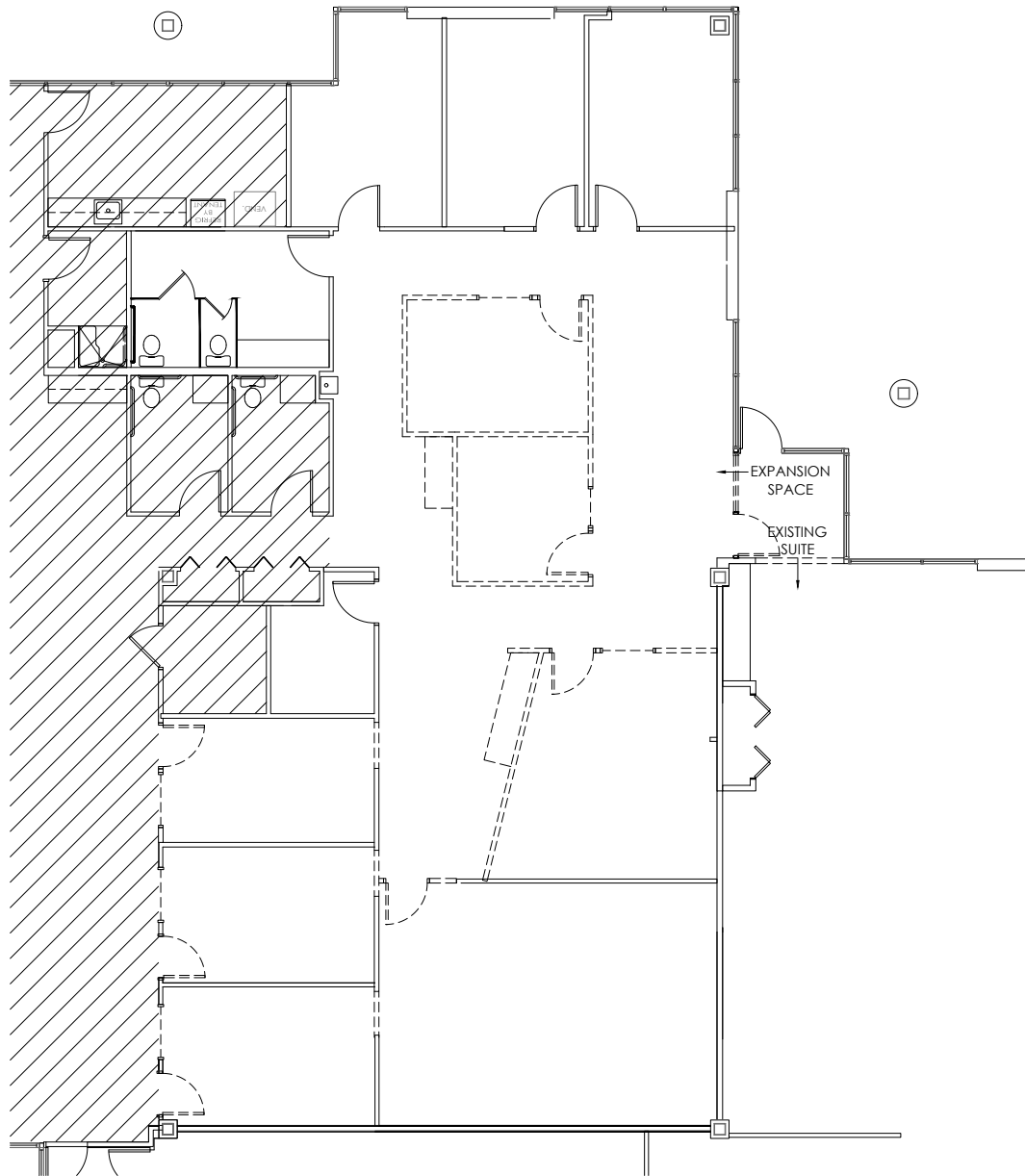
Kevin Archer  
Senior Director  
+1 317 218 7217  
kevin.archer@cushwake.com

Joshua Graham  
Director  
+1 317 639 0491  
joshua.graham@cushwake.com

Jon R. Owens, SIOR  
Managing Director  
+1 317 639 0447  
jon.owens@cushwake.com

# 5273-5307 LAKEVIEW PARKWAY S. DRIVE

## SUITE 5293 - 3,319 SF



- >>> 3,319 SF available
- >>> 100% office available
- >>> Open cubicle area
- >>> Private offices along perimeter

Owned By

**mapletree**

Ed Beehner  
Mapletree Investments  
+1 312 761 9477  
ed.beehner@mapletree.com.sg

Leased By

**CUSHMAN & WAKEFIELD**

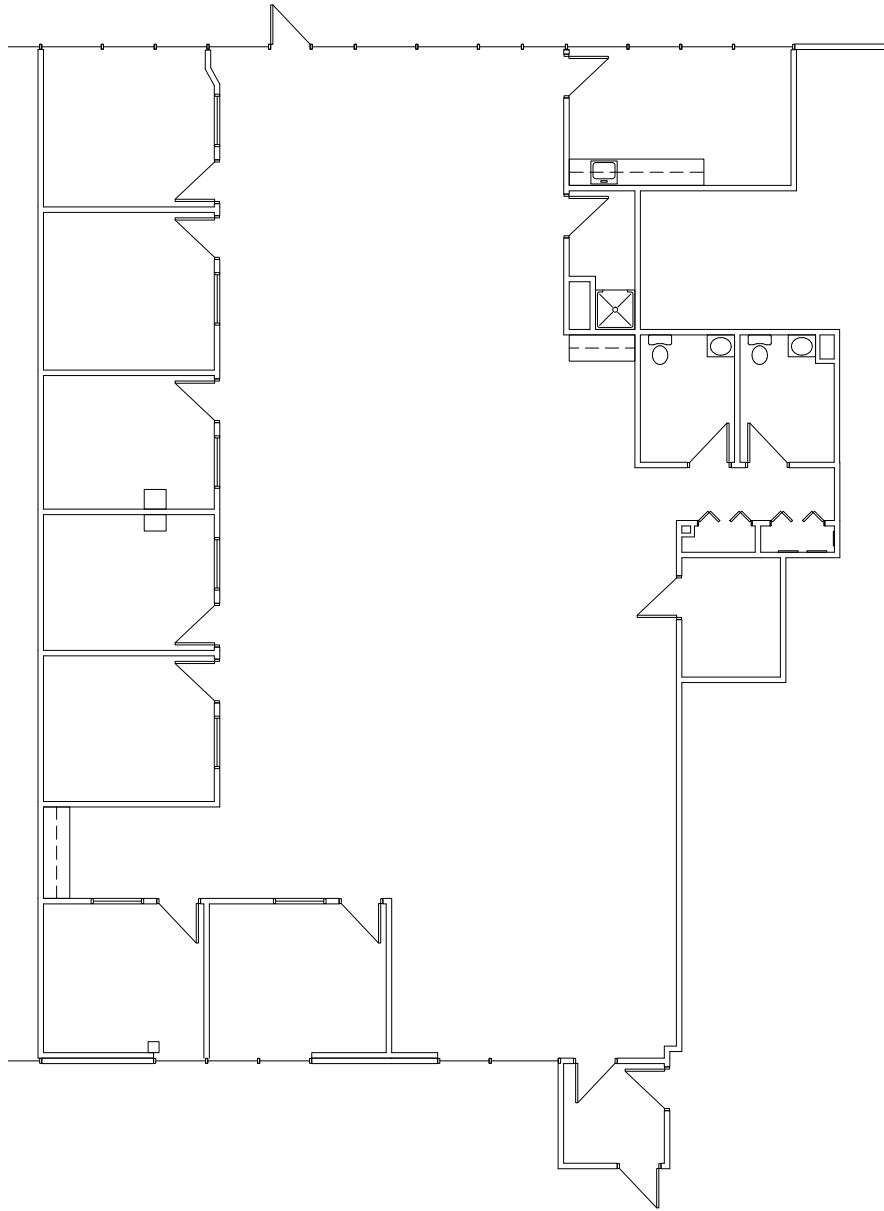
Kevin Archer  
Senior Director  
+1 317 218 7217  
kevin.archer@cushwake.com

Joshua Graham  
Director  
+1 317 639 0491  
joshua.graham@cushwake.com

Jon R. Owens, SIOR  
Managing Director  
+1 317 639 0447  
jon.owens@cushwake.com

# 5273-5307 LAKEVIEW PARKWAY S. DRIVE

## SUITE 5297 - 4,177 SF



- >>> 4,177 SF available
- >>> 100% office available
- >>> Open cubicle area
- >>> Private offices along perimeter

Owned By

**mapletree**

Ed Beehner  
Mapletree Investments  
+1 312 761 9477  
ed.beehner@mapletree.com.sg

Leased By

**CUSHMAN & WAKEFIELD**

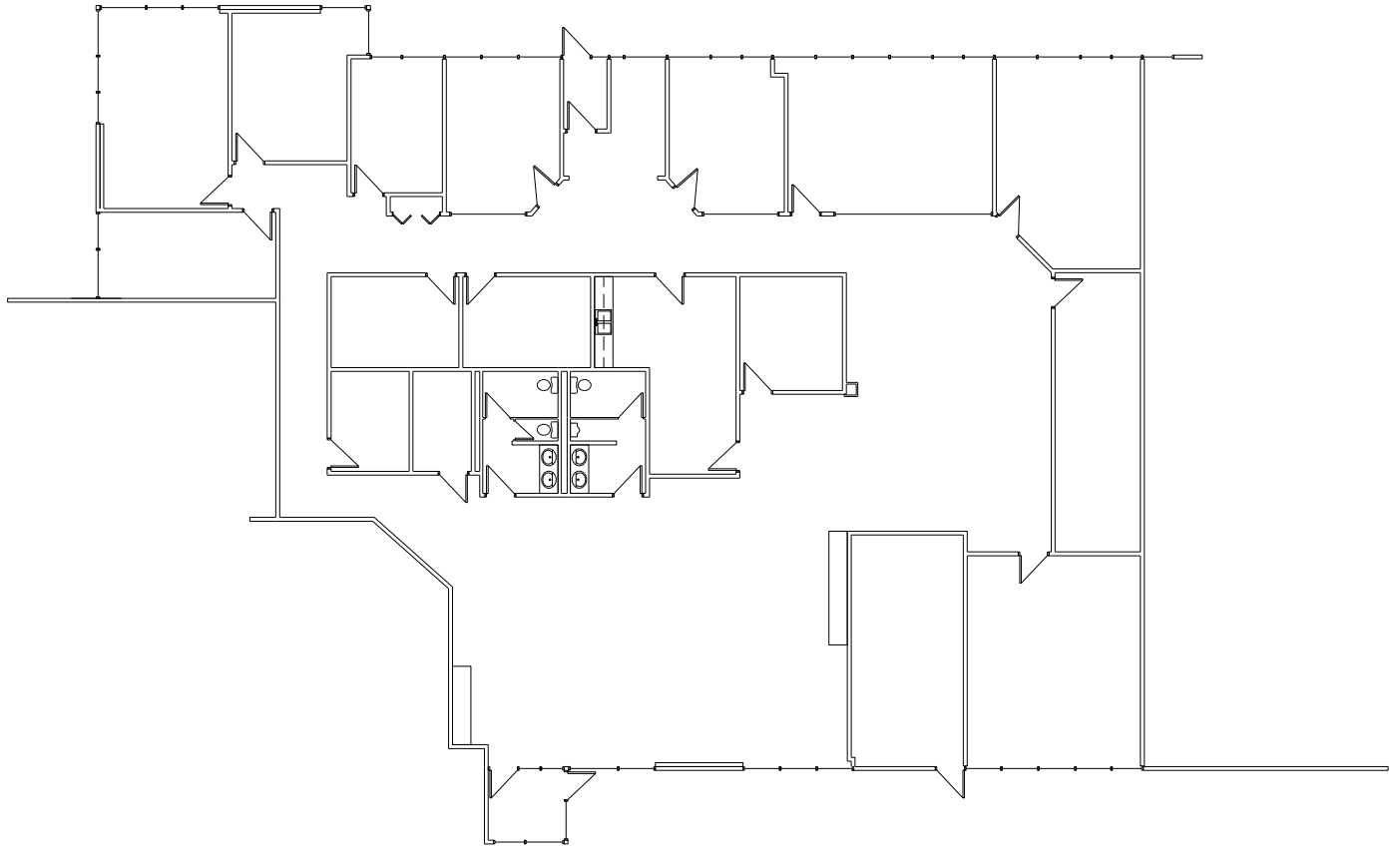
Kevin Archer  
Senior Director  
+1 317 218 7217  
kevin.archer@cushwake.com

Joshua Graham  
Director  
+1 317 639 0491  
joshua.graham@cushwake.com

Jon R. Owens, SIOR  
Managing Director  
+1 317 639 0447  
jon.owens@cushwake.com

# 5273-5307 LAKEVIEW PARKWAY S. DRIVE

## SUITE 5303 - 7,539 SF



- >>> 7,539 SF available
- >>> 100% office available
- >>> Abundant natural light
- >>> Multiple private offices
- >>> Breakroom
- >>> Open cubicle area

Owned By

**mapletree**

Ed Beehner  
Mapletree Investments  
+1 312 761 9477  
ed.beehner@mapletree.com.sg

Leased By

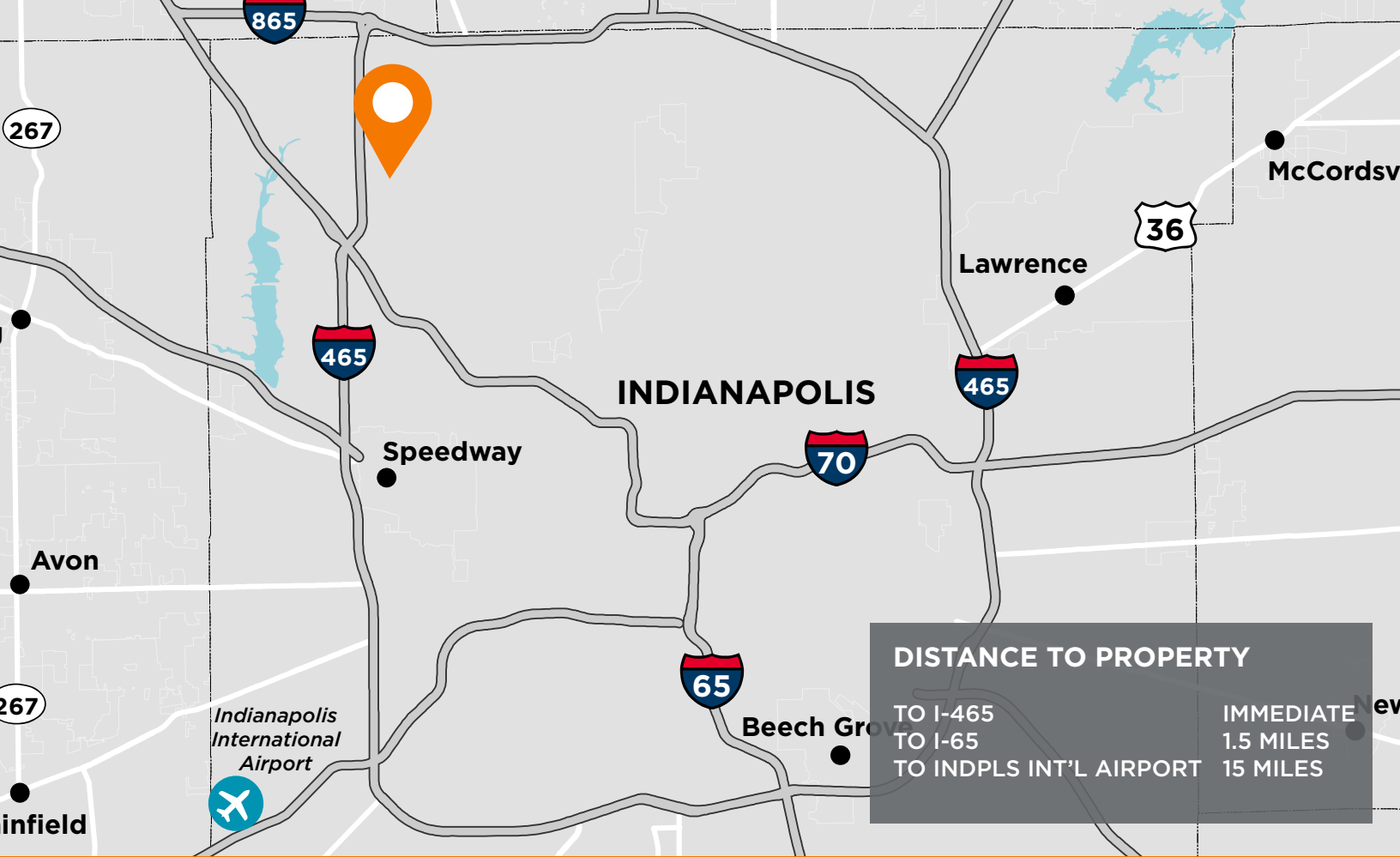
 **CUSHMAN & WAKEFIELD**

Kevin Archer  
Senior Director  
+1 317 218 7217  
kevin.archer@cushwake.com

Joshua Graham  
Director  
+1 317 639 0491  
joshua.graham@cushwake.com

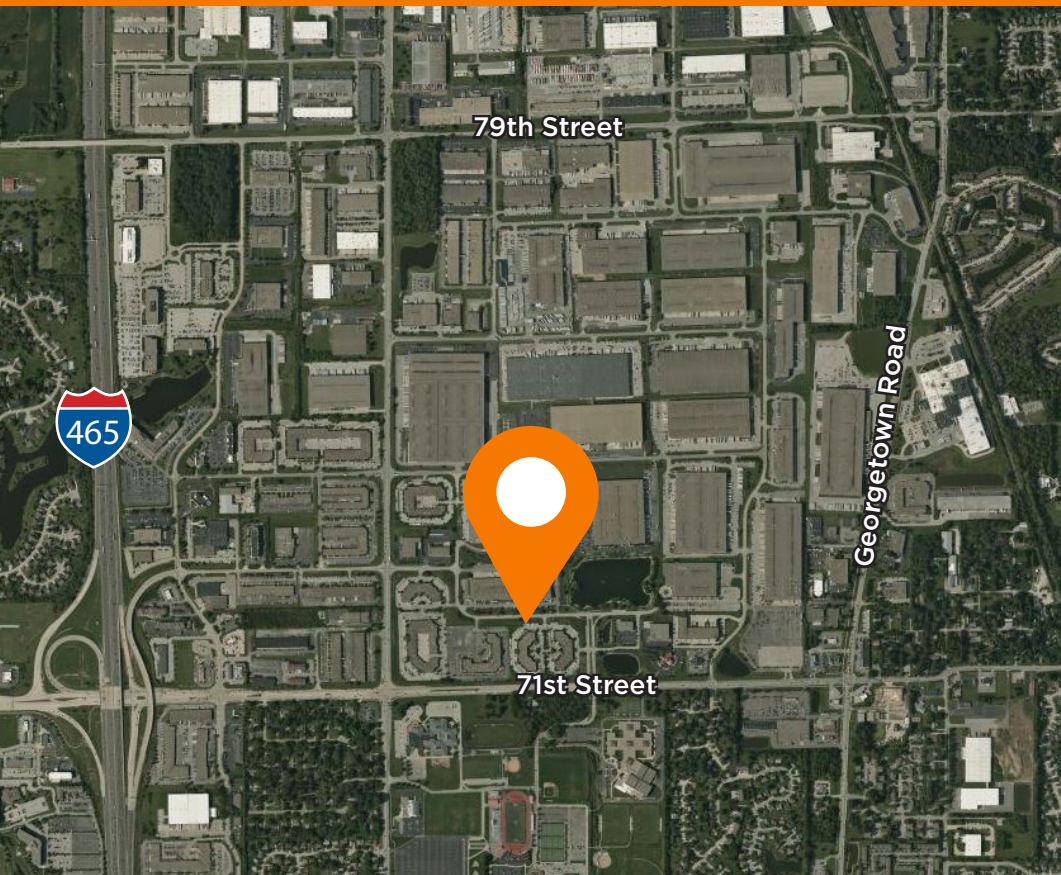
Jon R. Owens, SIOR  
Managing Director  
+1 317 639 0447  
jon.owens@cushwake.com





**DISTANCE TO PROPERTY**

TO I-465	IMMEDIATE
TO I-65	1.5 MILES
TO INDPLS INT'L AIRPORT	15 MILES



**Strategic Location**  
 Park 100 provides direct access to central Indiana's highways. Conveniently located on I-465 and minutes from I-65 and Indianapolis International Airport

**About Us**  
 Mapletree is a leading global real estate developer, investor and manager headquartered in Singapore. Mapletree owns and manages more than 70 million square feet of logistics and industrial properties across 26 states with offices in New York, Chicago, Atlanta, Dallas and Los Angeles.  
[www.mapletree.com.sg](http://www.mapletree.com.sg)

Owned By



Ed Beehner  
 Mapletree Investments  
 +1 312 761 9477  
 ed.beehner@mapletree.com.sg

Leased By



Kevin Archer  
 Senior Director  
 +1 317 218 7217  
 kevin.archer@cushwake.com

Joshua Graham  
 Director  
 +1 317 639 0491  
 joshua.graham@cushwake.com

Jon R. Owens, SIOR  
 Managing Director  
 +1 317 639 0447  
 jon.owens@cushwake.com