



FOR LEASE

Park 100 | Building 118
5273-5307 Lakeview Parkway S. Drive
Indianapolis, Indiana

W. 71st Street

Lakeview Pkwy S. Drive

36,472 SF

Property Features



36,472 SF building size



4.49 acres total site size



Ample car parking



Nearby amenities



Common picnic area



Current Availabilities

Suite 5273 - 11,397 SF

Suite 5285 - 10,040 SF

Suite 5293 - 3,319 SF

Suite 5297 - 4,177 SF [VIRTUAL TOUR](#)

Suite 5303 - 7,539 SF [VIRTUAL TOUR](#)

Suites 5273-5303 = 36,472 SF

Owned By

mapletree

Ed Behner
Mapletree Investments
+1 312 761 9477
ed.behner@mapletree.com.sg

Leased By

CUSHMAN & WAKEFIELD

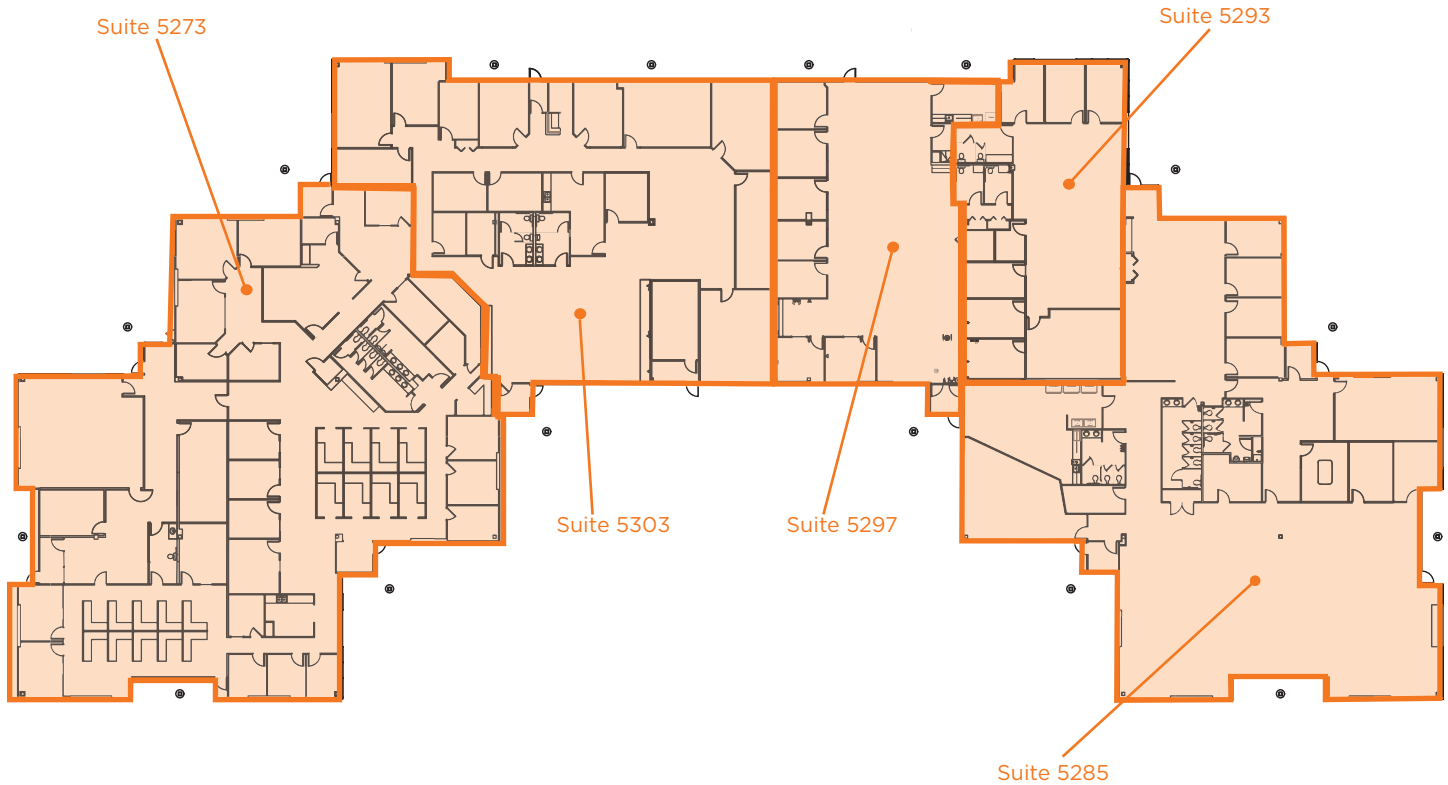
Kevin Archer
Senior Director
+1 317 218 7217
kevin.archer@cushwake.com

Joshua Graham
Director
+1 317 639 0491
joshua.graham@cushwake.com

Jon R. Owens, SIOR
Managing Director
+1 317 639 0447
jon.owens@cushwake.com

5273-5307 LAKEVIEW PARKWAY S. DRIVE

SITE PLAN



Current Availabilities

Suite 5273

- >>> 11,397 SF available
- >>> 100% office

Suite 5297

- >>> 4,177 SF available
- >>> 100% office

Suite 5285

- >>> 10,040 SF available
- >>> 100% office

Suite 5303

- >>> 7,539 SF available
- >>> 100% office

Suite 5293

- >>> 3,319 SF available
- >>> 100% office

Suites 5273-5303

- >>> 36,472 SF available

Owned By

maple^{tree}

Ed Beehner
Mapletree Investments
+1 312 761 9477
ed.beehner@mapletree.com.sg

Leased By



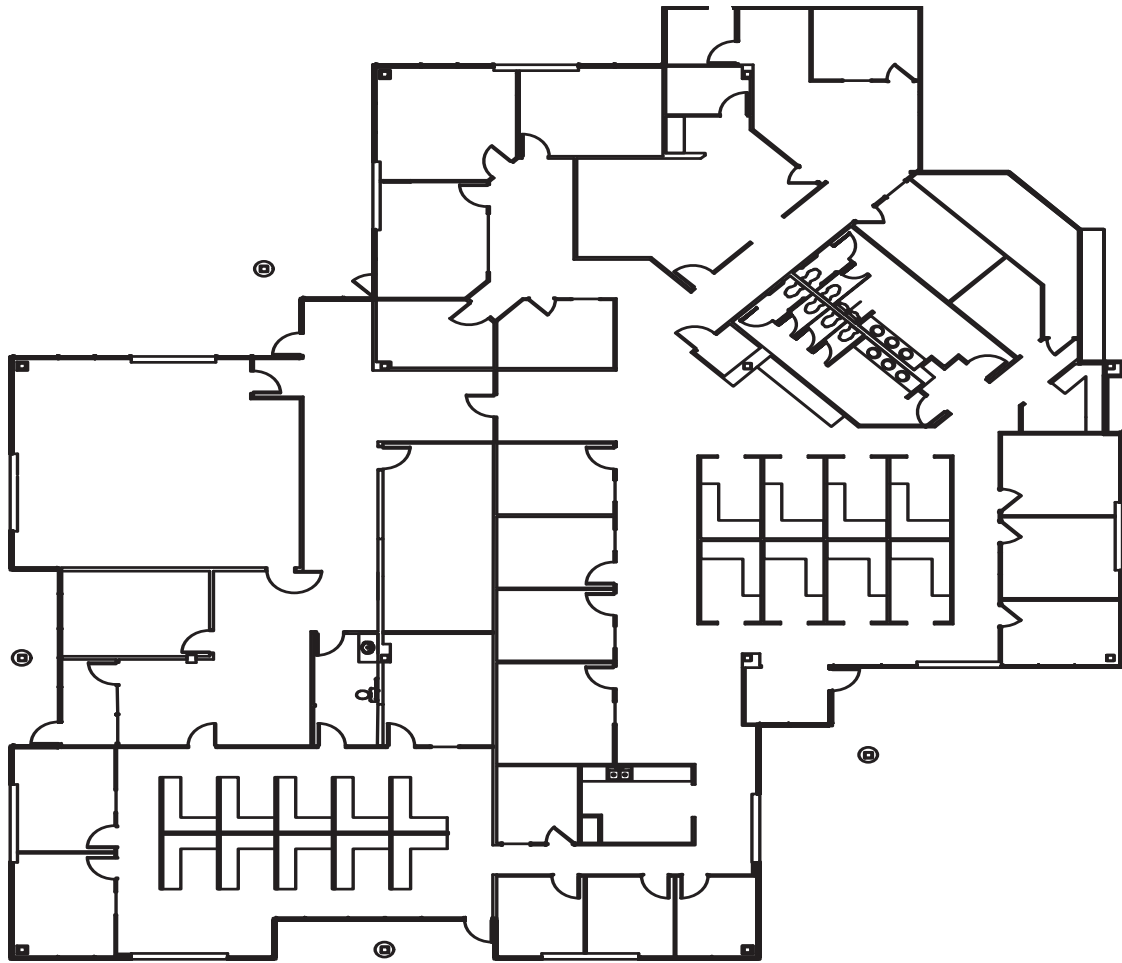
CUSHMAN & WAKEFIELD

Kevin Archer
Senior Director
+1 317 218 7217
kevin.archer@cushwake.com

Joshua Graham
Director
+1 317 639 0491
joshua.graham@cushwake.com

Jon R. Owens, SIOR
Managing Director
+1 317 639 0447
jon.owens@cushwake.com

5273-5307 LAKEVIEW PARKWAY S. DRIVE
SUITE 5273 - 11,397 SF



>>> 11,397 SF available

>>> 100% office available

Owned By

maple^{tree}

Ed Beehner
Mapletree Investments
+1 312 761 9477
ed.beehner@mapletree.com.sg

Leased By

 **CUSHMAN & WAKEFIELD**

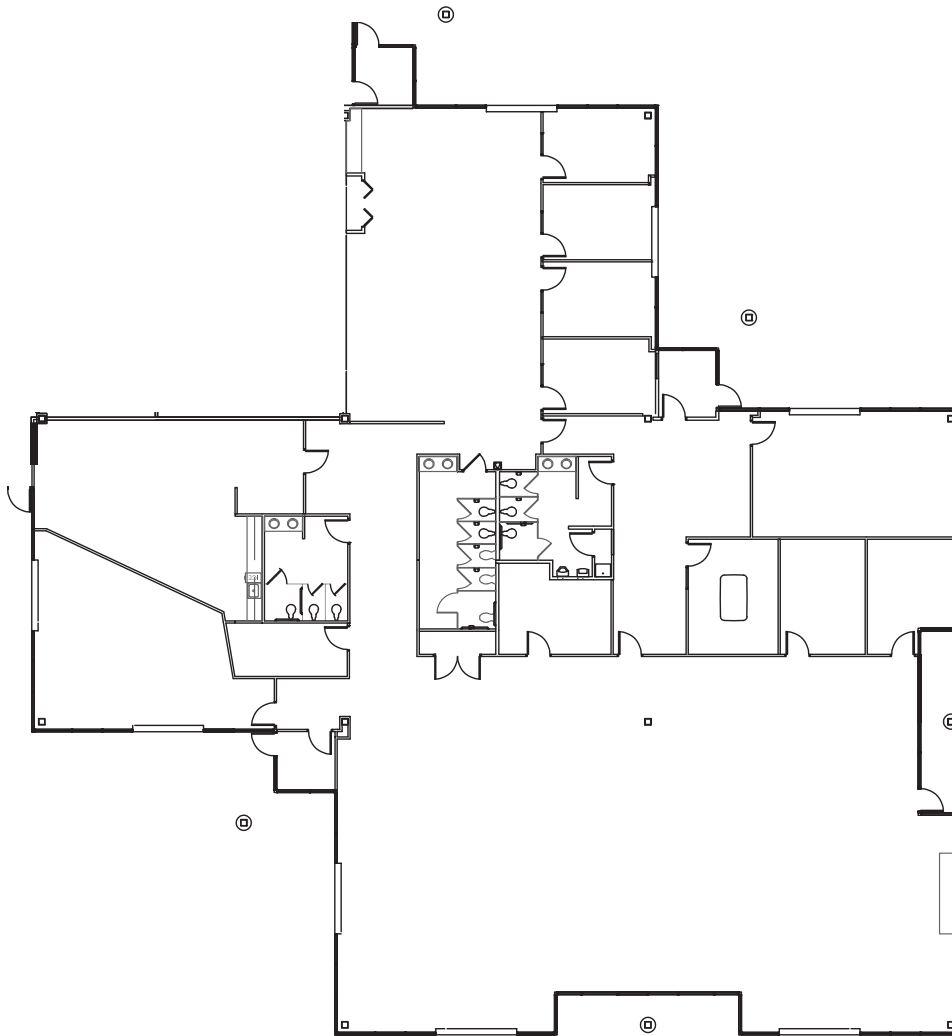
Kevin Archer
Senior Director
+1 317 218 7217
kevin.archer@cushwake.com

Joshua Graham
Director
+1 317 639 0491
joshua.graham@cushwake.com

Jon R. Owens, SIOR
Managing Director
+1 317 639 0447
jon.owens@cushwake.com

5273-5307 LAKEVIEW PARKWAY S. DRIVE

SUITE 5285 - 10,040 SF



>>> 10,040 SF available

>>> 100% office available

Owned By

mapletree

Ed Beehner
Mapletree Investments
+1 312 761 9477
ed.beehner@mapletree.com.sg

Leased By

CUSHMAN & WAKEFIELD

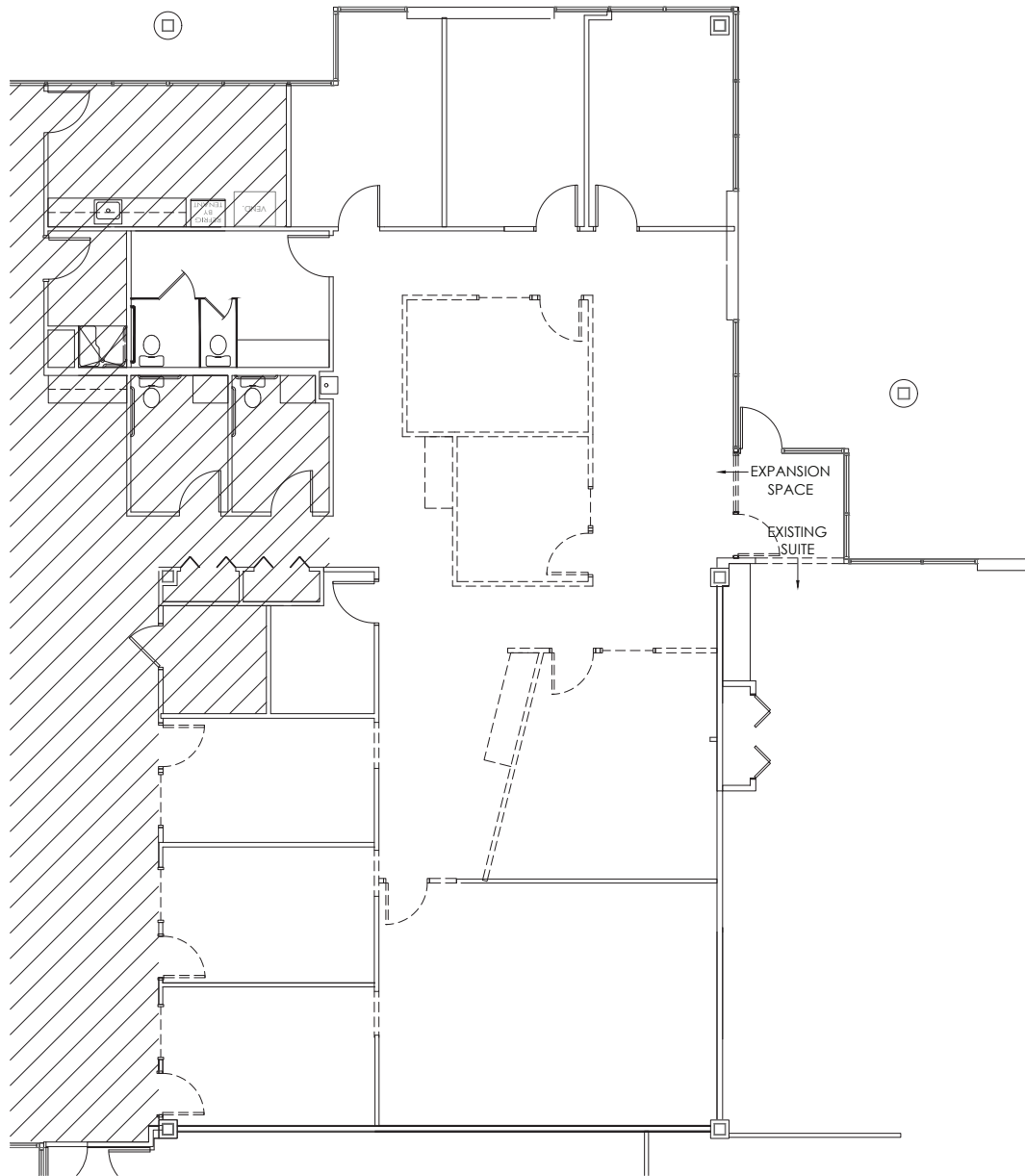
Kevin Archer
Senior Director
+1 317 218 7217
kevin.archer@cushwake.com

Joshua Graham
Director
+1 317 639 0491
joshua.graham@cushwake.com

Jon R. Owens, SIOR
Managing Director
+1 317 639 0447
jon.owens@cushwake.com

5273-5307 LAKEVIEW PARKWAY S. DRIVE

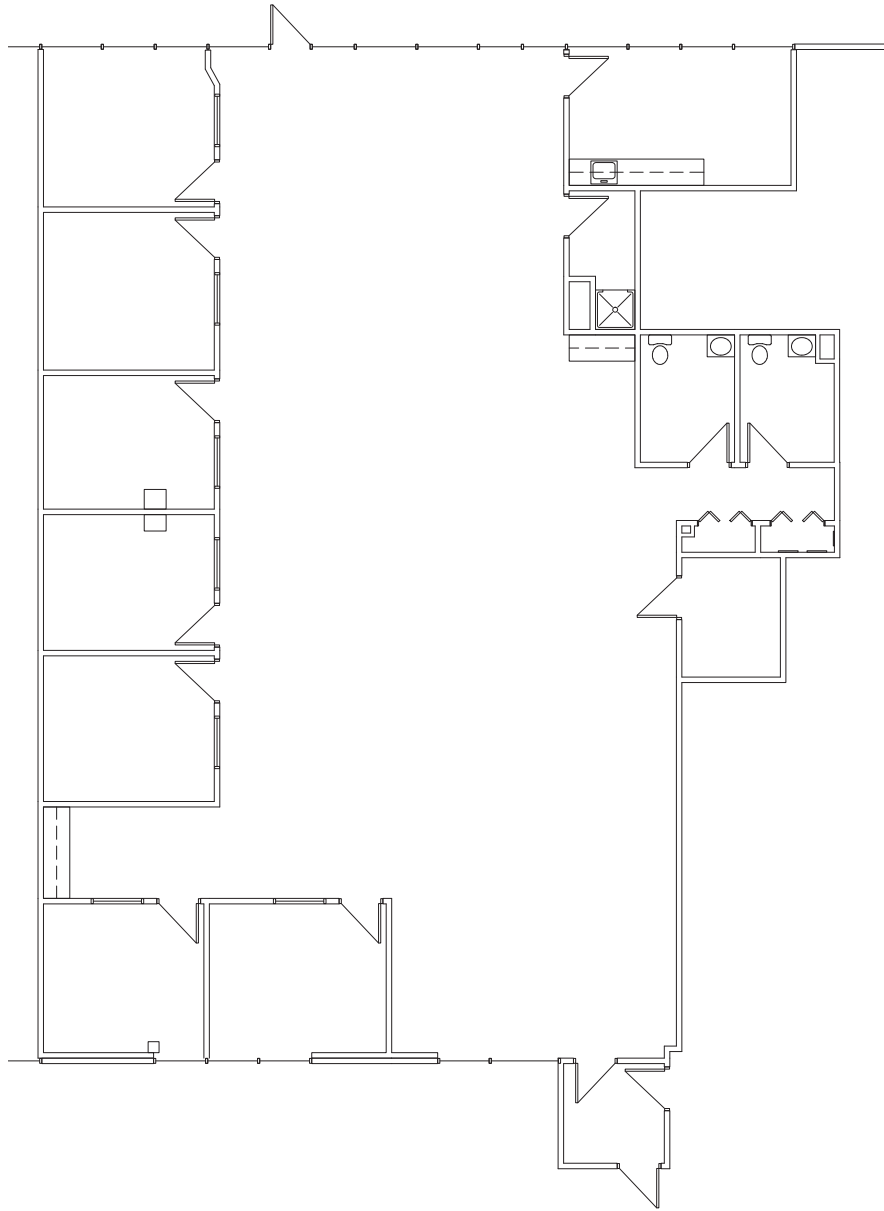
SUITE 5293 - 3,319 SF



- >>> 3,319 SF available
- >>> 100% office available
- >>> Open cubicle area
- >>> Private offices along perimeter

5273-5307 LAKEVIEW PARKWAY S. DRIVE

SUITE 5297 - 4,177 SF



- >>> 4,177 SF available
- >>> 100% office available
- >>> Open cubicle area
- >>> Private offices along perimeter

Owned By

maple^{tree}

Ed Beehner
MapleTree Investments
+1 312 761 9477
ed.beehner@mapletree.com.sg

Leased By

 **CUSHMAN & WAKEFIELD**

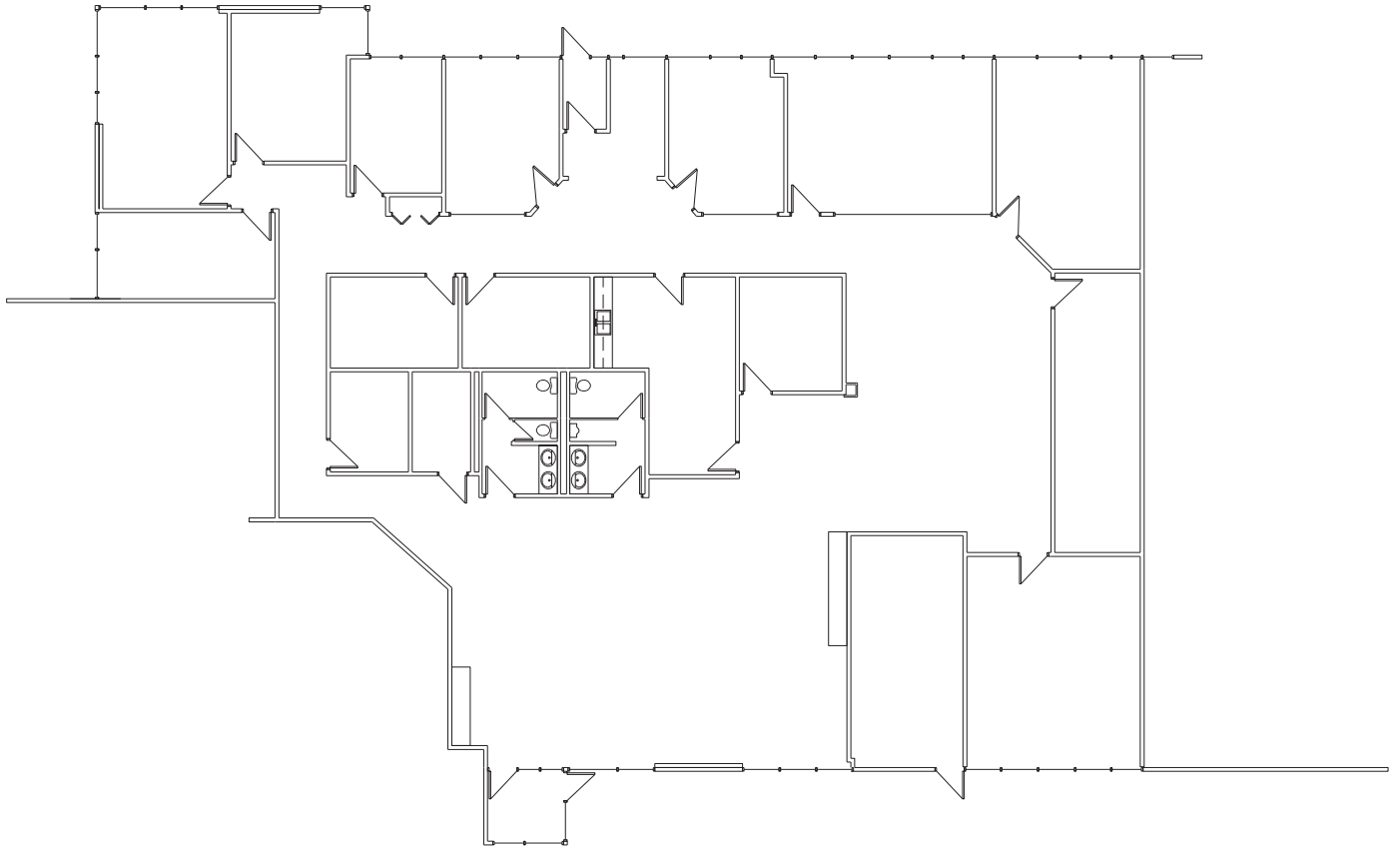
Kevin Archer
Senior Director
+1 317 218 7217
kevin.archer@cushwake.com

Joshua Graham
Director
+1 317 639 0491
joshua.graham@cushwake.com

Jon R. Owens, SIOR
Managing Director
+1 317 639 0447
jon.owens@cushwake.com

5273-5307 LAKEVIEW PARKWAY S. DRIVE

SUITE 5303 - 7,539 SF



- >>> 7,539 SF available
- >>> 100% office available
- >>> Abundant natural light
- >>> Multiple private offices
- >>> Breakroom
- >>> Open cubicle area

Owned By

mapletree

Ed Beehner
MapleTree Investments
+1 312 761 9477
ed.beehner@mapletree.com.sg

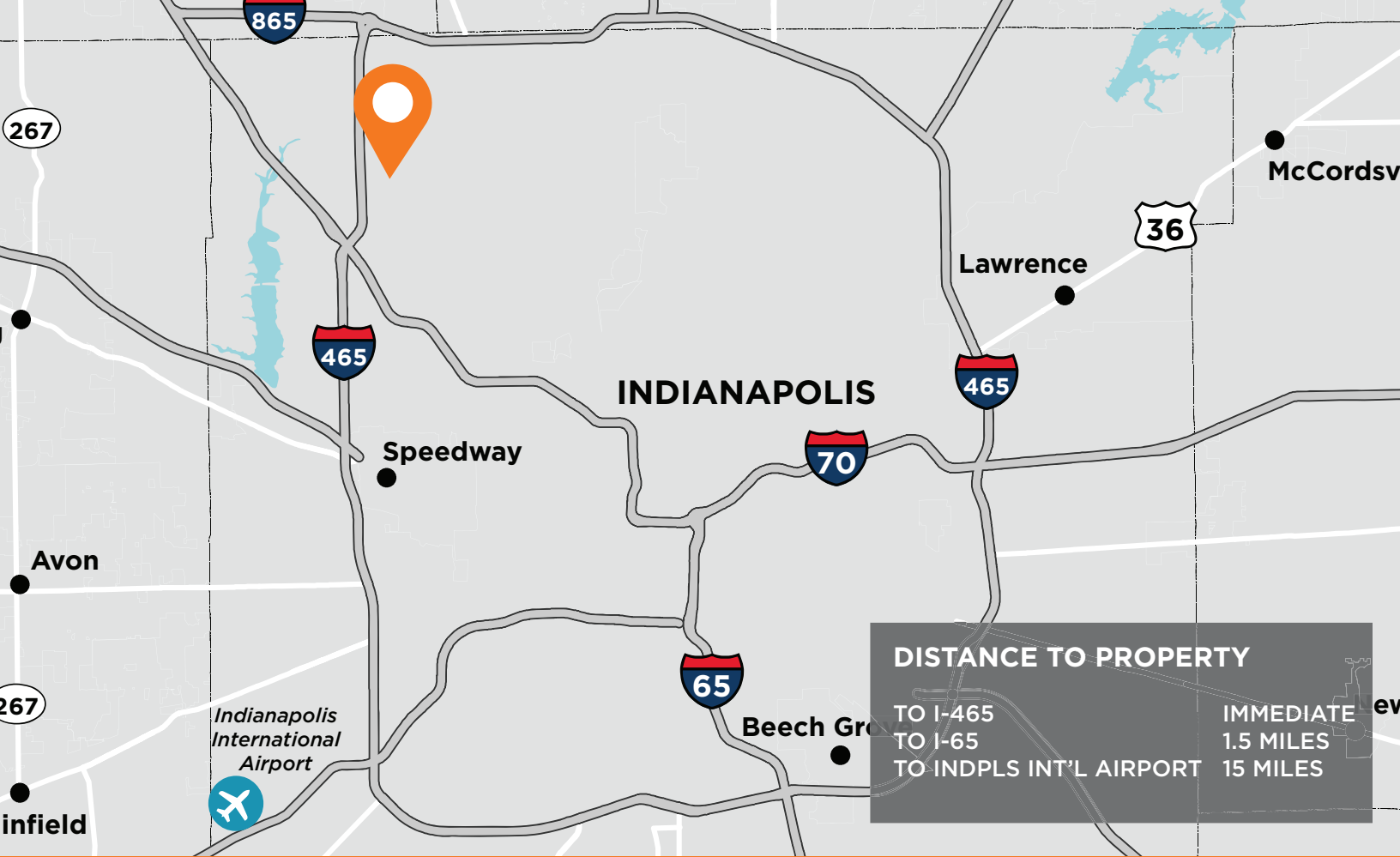
Leased By

 **CUSHMAN & WAKEFIELD**

Kevin Archer
Senior Director
+1 317 218 7217
kevin.archer@cushwake.com

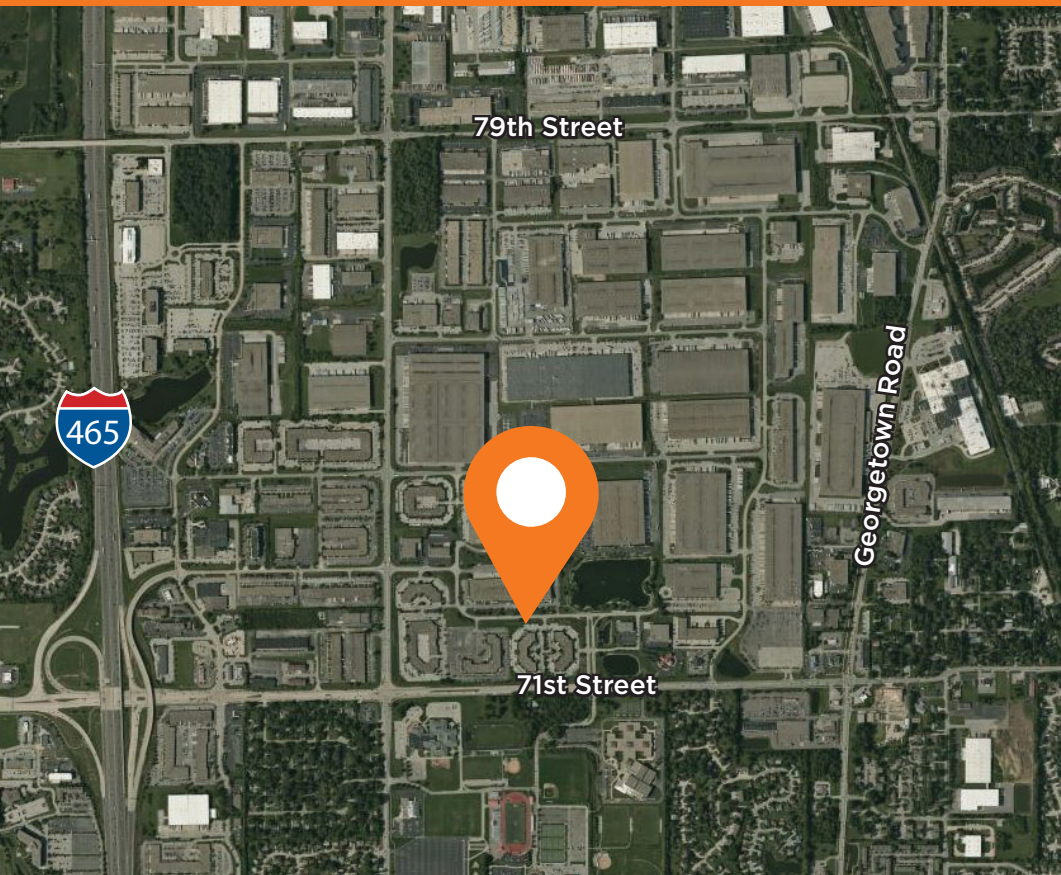
Joshua Graham
Director
+1 317 639 0491
joshua.graham@cushwake.com

Jon R. Owens, SIOR
Managing Director
+1 317 639 0447
jon.owens@cushwake.com



DISTANCE TO PROPERTY

TO I-465	IMMEDIATE
TO I-65	1.5 MILES
TO INDPLS INT'L AIRPORT	15 MILES



Strategic Location

Park 100 provides direct access to central Indiana's highways. Conveniently located on I-465 and minutes from I-65 and Indianapolis International Airport

About Us

Mapletree is a leading global real estate developer, investor and manager headquartered in Singapore. Mapletree owns and manages more than 70 million square feet of logistics and industrial properties across 26 states with offices in New York, Chicago, Atlanta, Dallas and Los Angeles.

www.mapletree.com.sg

Owned By



Ed Beehner
Mapletree Investments
+1 312 761 9477
ed.beehner@mapletree.com.sg

Leased By



Kevin Archer
Senior Director
+1 317 218 7217
kevin.archer@cushwake.com

Joshua Graham
Director
+1 317 639 0491
joshua.graham@cushwake.com

Jon R. Owens, SIOR
Managing Director
+1 317 639 0447
jon.owens@cushwake.com