

Property Highlights

- 11,500 RSF
- Rare Commercial/Flex/Office in a Downtown Location
- Zoning CBD-C
- 100% HVAC
- 2 Roll Up Doors
- 2 Conference Rooms
- Ample Skylights Bring in Natural Light
- Classic Bow Truss Wood Structure
- Open Kitchenette
- Near Countless Surrounding Amenities Including Restaurants, Retail, Lake Merritt, & Snow Park.
- Four Blocks to BART
- **Sale Price: \$3,400,000**
- \$2.25 PSF, Industrial Gross



John McManus

Exec. Managing Director
+1 510 891 5817
john.mcmanus@cushwake.com
LIC #01129064

David Englert

Director
+1 510 267 6037
david.englert@cushwake.com
LIC #01291709

555 12th Street, Suite 1400
Oakland, CA 94607
main +1 510 465 8000
fax +1 510 465 1350
cushmanwakefield.com

©2020 Cushman & Wakefield. All rights reserved. The information contained in this communication is strictly confidential. This information has been obtained from sources believed to be reliable but has not been verified. NO WARRANTY OR REPRESENTATION, EXPRESS OR IMPLIED, IS MADE AS TO THE CONDITION OF THE PROPERTY (OR PROPERTIES) REFERENCED HEREIN OR AS TO THE ACCURACY OR COMPLETENESS OF THE INFORMATION CONTAINED HEREIN, AND SAME IS SUBMITTED SUBJECT TO ERRORS, OMISSIONS, CHANGE OF PRICE, RENTAL OR OTHER CONDITIONS, WITHDRAWAL WITHOUT NOTICE, AND TO ANY SPECIAL LISTING CONDITIONS IMPOSED BY THE PROPERTY OWNER(S). ANY PROJECTIONS, OPINIONS OR ESTIMATES ARE SUBJECT TO UNCERTAINTY AND DO NOT SIGNIFY CURRENT OR FUTURE PROPERTY PERFORMANCE.

[Visit Site Specific COVID-19 Prevention Plan](#)



FOR SALE OR LEASE

1600 Harrison Street
Oakland, California



John McManus
Exec. Managing Director
+1 510 891 5817
john.mcmanus@cushwake.com
LIC #01129064

David Englert
Director
+1 510 267 6037
david.englert@cushwake.com
LIC #01291709

555 12th Street, Suite 1400
Oakland, CA 94607
main +1 510 465 8000
fax +1 510 465 1350
cushmanwakefield.com

©2020 Cushman & Wakefield. All rights reserved. The information contained in this communication is strictly confidential. This information has been obtained from sources believed to be reliable but has not been verified. NO WARRANTY OR REPRESENTATION, EXPRESS OR IMPLIED, IS MADE AS TO THE CONDITION OF THE PROPERTY (OR PROPERTIES) REFERENCED HEREIN OR AS TO THE ACCURACY OR COMPLETENESS OF THE INFORMATION CONTAINED HEREIN, AND SAME IS SUBMITTED SUBJECT TO ERRORS, OMISSIONS, CHANGE OF PRICE, RENTAL OR OTHER CONDITIONS, WITHDRAWAL WITHOUT NOTICE, AND TO ANY SPECIAL LISTING CONDITIONS IMPOSED BY THE PROPERTY OWNER(S). ANY PROJECTIONS, OPINIONS OR ESTIMATES ARE SUBJECT TO UNCERTAINTY AND DO NOT SIGNIFY CURRENT OR FUTURE PROPERTY PERFORMANCE.

[Visit Site Specific COVID-19 Prevention Plan](#)

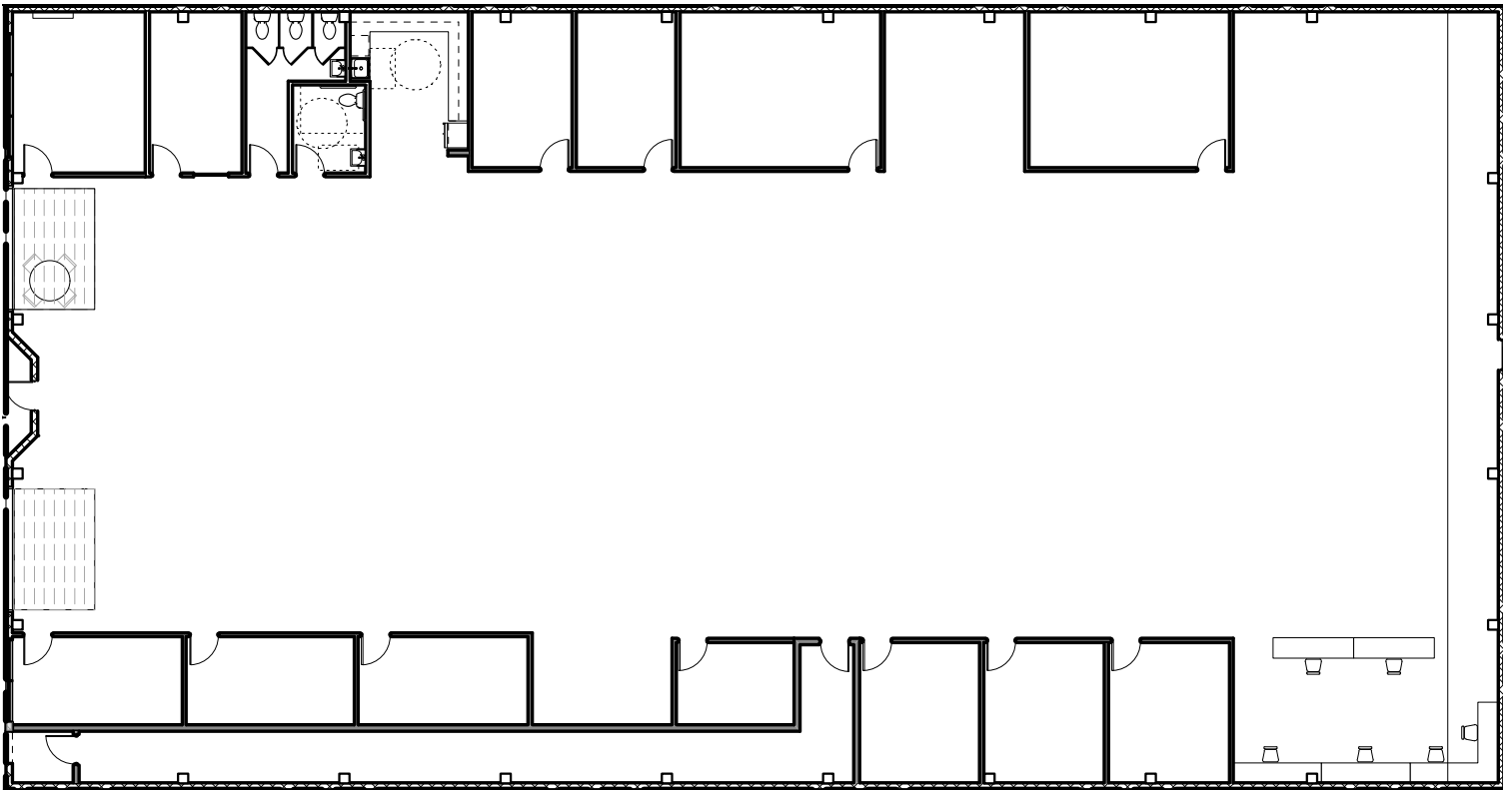


**CUSHMAN &
WAKEFIELD**

FOR SALE OR LEASE

1600 Harrison Street
Oakland, California

Site Plan



John McManus
Exec. Managing Director
+1 510 891 5817
john.mcmanus@cushwake.com
LIC #01129064

David Englert
Director
+1 510 267 6037
david.englert@cushwake.com
LIC #01291709

555 12th Street, Suite 1400
Oakland, CA 94607
main +1 510 465 8000
fax +1 510 465 1350
cushmanwakefield.com

©2020 Cushman & Wakefield. All rights reserved. The information contained in this communication is strictly confidential. This information has been obtained from sources believed to be reliable but has not been verified. NO WARRANTY OR REPRESENTATION, EXPRESS OR IMPLIED, IS MADE AS TO THE CONDITION OF THE PROPERTY (OR PROPERTIES) REFERENCED HEREIN OR AS TO THE ACCURACY OR COMPLETENESS OF THE INFORMATION CONTAINED HEREIN, AND SAME IS SUBMITTED SUBJECT TO ERRORS, OMISSIONS, CHANGE OF PRICE, RENTAL OR OTHER CONDITIONS, WITHDRAWAL WITHOUT NOTICE, AND TO ANY SPECIAL LISTING CONDITIONS IMPOSED BY THE PROPERTY OWNER(S). ANY PROJECTIONS, OPINIONS OR ESTIMATES ARE SUBJECT TO UNCERTAINTY AND DO NOT SIGNIFY CURRENT OR FUTURE PROPERTY PERFORMANCE.

[Visit Site Specific COVID-19 Prevention Plan](#)



**CUSHMAN &
WAKEFIELD**

FOR SALE OR LEASE

1600 Harrison Street
Oakland, California



John McManus
Exec. Managing Director
+1 510 891 5817
john.mcmanus@cushwake.com
LIC #01129064

David Englert
Director
+1 510 267 6037
david.englert@cushwake.com
LIC #01291709

555 12th Street, Suite 1400
Oakland, CA 94607
main +1 510 465 8000
fax +1 510 465 1350
cushmanwakefield.com

©2020 Cushman & Wakefield. All rights reserved. The information contained in this communication is strictly confidential. This information has been obtained from sources believed to be reliable but has not been verified. NO WARRANTY OR REPRESENTATION, EXPRESS OR IMPLIED, IS MADE AS TO THE CONDITION OF THE PROPERTY (OR PROPERTIES) REFERENCED HEREIN OR AS TO THE ACCURACY OR COMPLETENESS OF THE INFORMATION CONTAINED HEREIN, AND SAME IS SUBMITTED SUBJECT TO ERRORS, OMISSIONS, CHANGE OF PRICE, RENTAL OR OTHER CONDITIONS, WITHDRAWAL WITHOUT NOTICE, AND TO ANY SPECIAL LISTING CONDITIONS IMPOSED BY THE PROPERTY OWNER(S). ANY PROJECTIONS, OPINIONS OR ESTIMATES ARE SUBJECT TO UNCERTAINTY AND DO NOT SIGNIFY CURRENT OR FUTURE PROPERTY PERFORMANCE.

[Visit Site Specific COVID-19 Prevention Plan](#)