

FOR LEASE  
1628 Tiburon Blvd.  
Tiburon, CA



Second Floor Office Space



## OFFICE FOR LEASE

### Property Highlights

Maritime Plaza was recently updated to a modern and coastal workspace. Escape the San Francisco city life and work closer to home in Tiburon.

- Right on Tiburon Boulevard
- Walking Distance to Local Restaurants and Woodlands Market
- Hands-On Ownership
- Updated Suites



### Contact

TREVOR BUCK  
Executive Director  
+1 415 451 2436

[Trevor.Buck@cushwake.com](mailto:Trevor.Buck@cushwake.com)

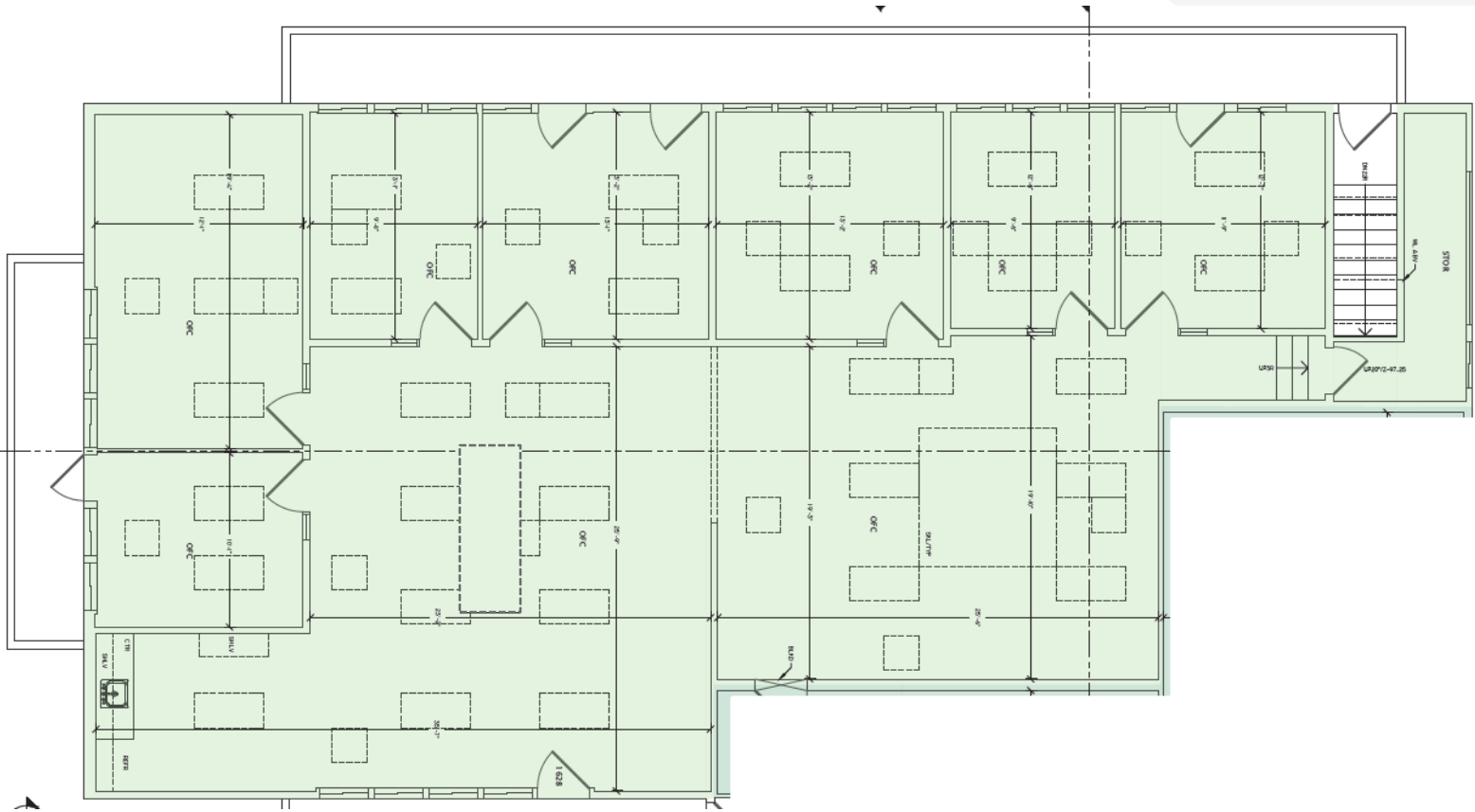
BRIAN FOSTER  
Managing Director  
+1 415 451 2437

[Brian.Foster@cushwake.com](mailto:Brian.Foster@cushwake.com)

HEATHER TRIMBLE  
Senior Associate  
+1 415 299 6683

[Heather.Trimble@cushwake.com](mailto:Heather.Trimble@cushwake.com)

FOR LEASE  
1628 Tiburon Blvd.  
Tiburon, CA



## Suite 1628

\$4.00/sf Full Service

- 2,604sf office space
- Kitchen
- 6 Offices
- 1 Conference Room
- Bullpen
- Storage/ IT Room
- Designated parking
- Private Deck
- Walking distance to Main Street

### Contact

TREVOR BUCK  
Executive Director  
+1 415 451 2436

[Trevor.Buck@cushwake.com](mailto:Trevor.Buck@cushwake.com)

BRIAN FOSTER  
Managing Director  
+1 415 451 2437

[Brian.Foster@cushwake.com](mailto:Brian.Foster@cushwake.com)

HEATHER TRIMBLE  
Senior Associate  
+1 415 299 6683

[Heather.Trimble@cushwake.com](mailto:Heather.Trimble@cushwake.com)

FOR LEASE  
1628 Tiburon Blvd.  
Tiburon, CA



## Contact

TREVOR BUCK  
Executive Director  
+1 415 451 2436

[Trevor.Buck@cushwake.com](mailto:Trevor.Buck@cushwake.com)

BRIAN FOSTER  
Managing Director  
+1 415 451 2437

[Brian.Foster@cushwake.com](mailto:Brian.Foster@cushwake.com)

HEATHER TRIMBLE  
Senior Associate  
+1 415 299 6683

[Heather.Trimble@cushwake.com](mailto:Heather.Trimble@cushwake.com)