

DORSI BONNER
Coldwell Banker Realty
CB Realty Sales Specialist
Lic. #02031458
415 388 5060
Dorsi.Bonner@cbnorcal.com

BRIAN FOSTER
Cushman & Wakefield
Managing Director
Lic. #01393059
415 451 2437
Brian.Foster@cushwake.com

TREVOR BUCK
Cushman & Wakefield
Executive Director
Lic. #01255462
415 451 2436
Trevor.Buck@cushwake.com

FOR LEASE | ±6,300 RSF

36 TIBURON BLVD MILL VALLEY, CA

36
TIBURON BLVD



**COLDWELL BANKER
REALTY**



**CUSHMAN &
WAKEFIELD**

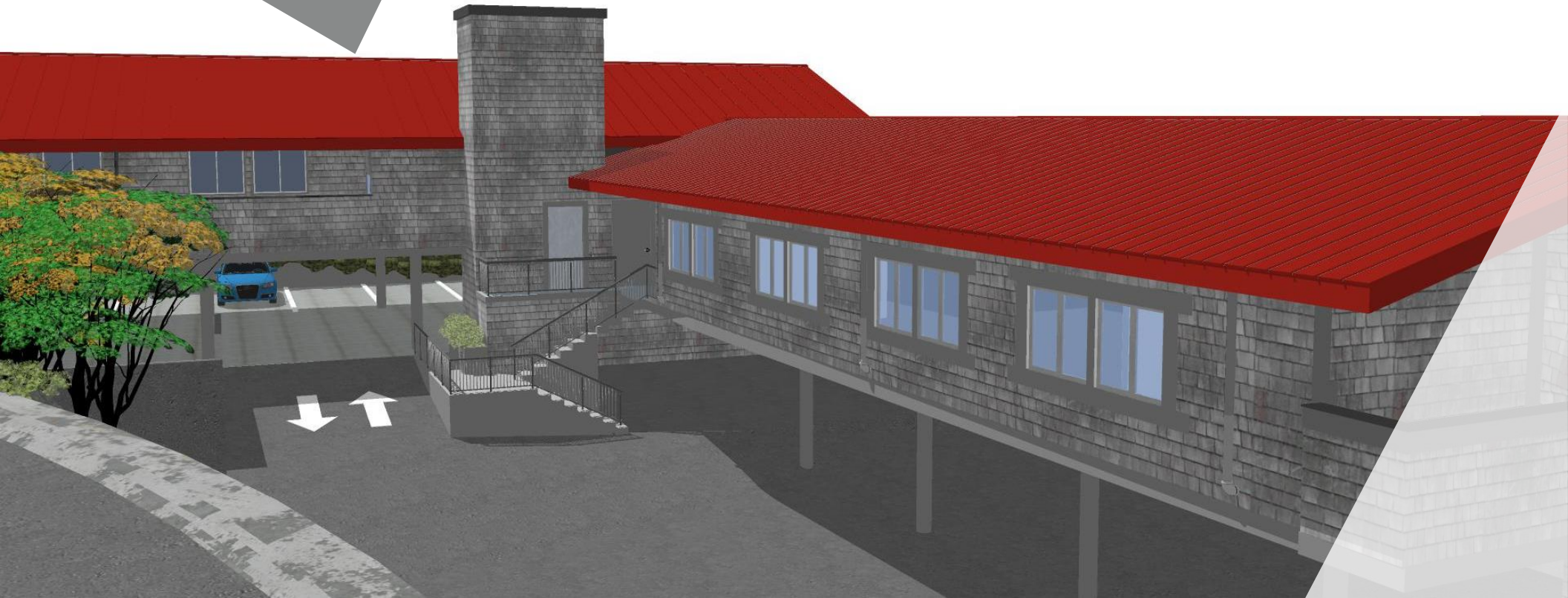
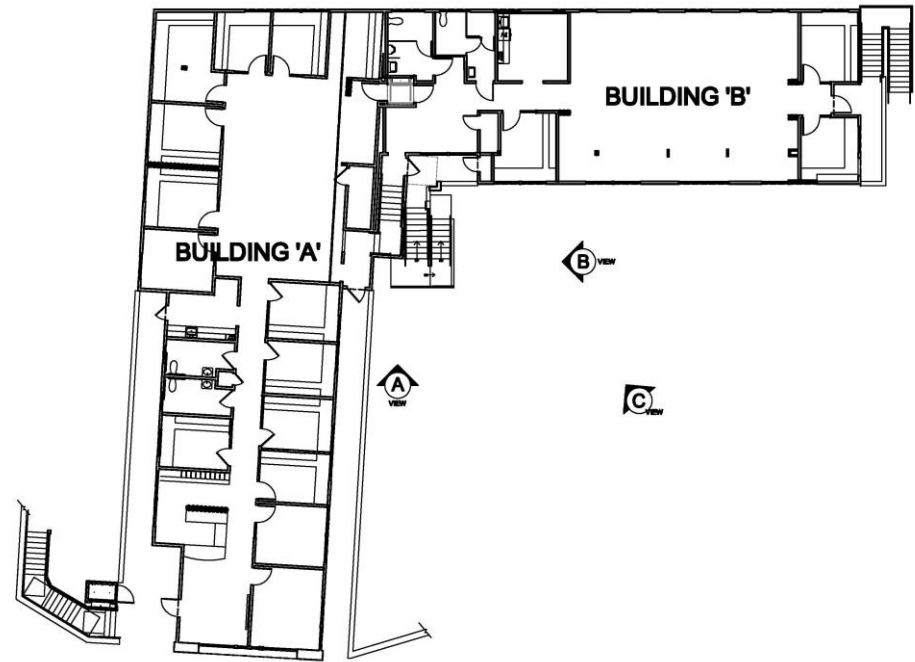
PROPERTY OVERVIEW

- Entire Building For Lease
- ±6,300 RSF Available | Divisible
- Upper Building: ±3,832 SF
- Lower Building: ±2,468 SF
- \$5.00 per SF NNN
- ADA Lift/Accessible
- Covered Parking | 27 Total Onsite Parking Spots
- High Traffic Intersection & Excellent Building Visibility
- [Click to View Property Video](#)



ADDITIONAL HIGHLIGHTS

- Prominent building signage on Tiburon Blvd and Hwy 101 Junction
- New updated exterior and interior improvements
- Prime Southern Marin location adjacent to freeway and Strawberry Village Shopping Center
- Medical uses permitted
- Mt. Tam Views



LOCATION

- 5 Minute Walk to Strawberry Village Shopping Center
- Adjacent to Hwy 101 Junction
- 25 Minute Drive to Downtown San Francisco
- Easy Access to both Mill Valley and Tiburon Downtowns



TIBURON BLVD


36 TIBURON BLVD

STRAWBERRY VILLAGE SHOPPING CENTER



E BLITHEDALE AVE

SAN FRANCISCO



coldwellbanker.com
cushmanwakefield.com

DORSI BONNER

Coldwell Banker Realty
CB Realty Sales Specialist
Lic. #02031458
415 388 5060
Dorsi.Bonner@cbnorcal.com

BRIAN FOSTER

Cushman & Wakefield
Managing Director
Lic. #01393059
415 451 2437
Brian.Foster@cushwake.com

TREVOR BUCK

Cushman & Wakefield
Executive Director
Lic. #01255462
415 451 2436
Trevor.Buck@cushwake.com



**COLDWELL BANKER
REALTY**



**CUSHMAN &
WAKEFIELD**