



**FOR LEASE**



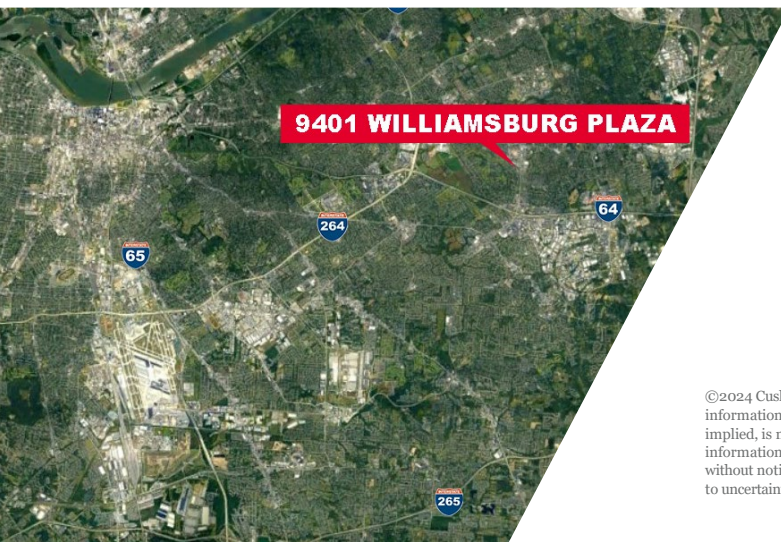
# 9401 WILLIAMSBURG PLAZA

Louisville, KY 40222

**2,000 - 14,563 SF  
AVAILABLE**

## PROPERTY HIGHLIGHTS

- Well-maintained efficient office building
- Superior east end lease value
- Monument signage available
- Strategically positioned near the Shelbyville/Hurstbourne intersection
- Superior walkability to nearby banks, restaurants, and new apartments



**9401 WILLIAMSBURG PLAZA**

### **SAM GRAY**

Senior Associate  
+1 502 589 5150 ext. 240  
samgray@commercialkentucky.com

### **SAM ENGLISH, CFA**

Senior Director  
+1 502 589 5150 ext. 244  
senglish@commercialkentucky.com

333 E Main Street, Suite 510  
Louisville, KY 40202  
Main +1 502 589 5150  
www.Commercialkentucky.com

©2024 Cushman & Wakefield. All rights reserved. The information contained in this communication is strictly confidential. This information has been obtained from sources believed to be reliable but has not been verified. No warranty or representation, express or implied, is made as to the condition of the property (or properties) referenced herein or as to the accuracy or completeness of the information contained herein, and same is submitted subject to errors, omissions, change of price, rental or other conditions, withdrawal without notice, and to any special listing conditions imposed by the property owner(s). Any projections, opinions or estimates are subject to uncertainty and do not signify current or future property performance.

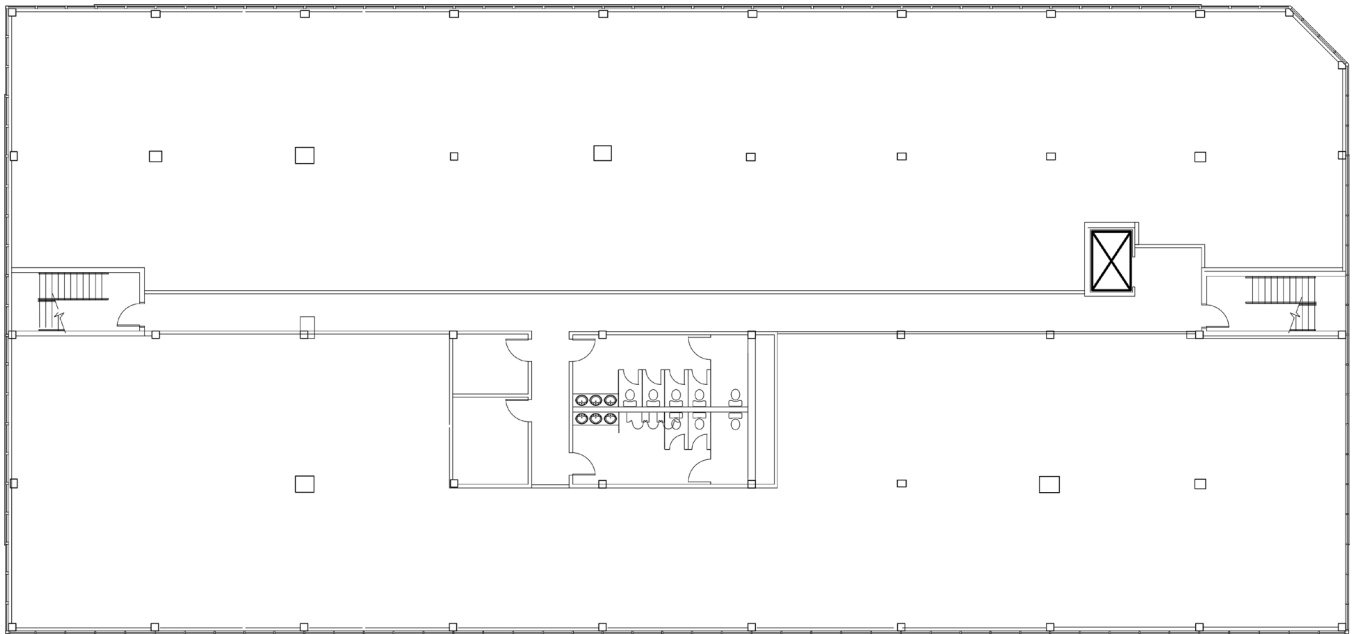
# 9401 WILLIAMSBURG PLAZA

Louisville, KY 40222

**2,000 – 14,563 SF AVAILABLE**



## Third Floor Plan | 14,563 sf Available



### Demographics

	1 Mile	3 Mile	5 Mile
Population	9,027	64,700	164,297
AVG. HH Income	\$103,504	\$85,075	\$88,638
Households	4,562	34,928	89,162

### Traffic Counts

S. Hurstbourne Parkway 33,927

**SAM GRAY**  
Senior Associate  
+1 502 589 5150 ext. 240  
samgray@commercialkentucky.com

**SAM ENGLISH, CFA**  
Senior Director  
+1 502 589 5150 ext. 244  
senGLISH@commercialkentucky.com

333 E Main Street, Suite 510  
Louisville, KY 40202  
Main +1 502 589 5150  
www.Commercialkentucky.com



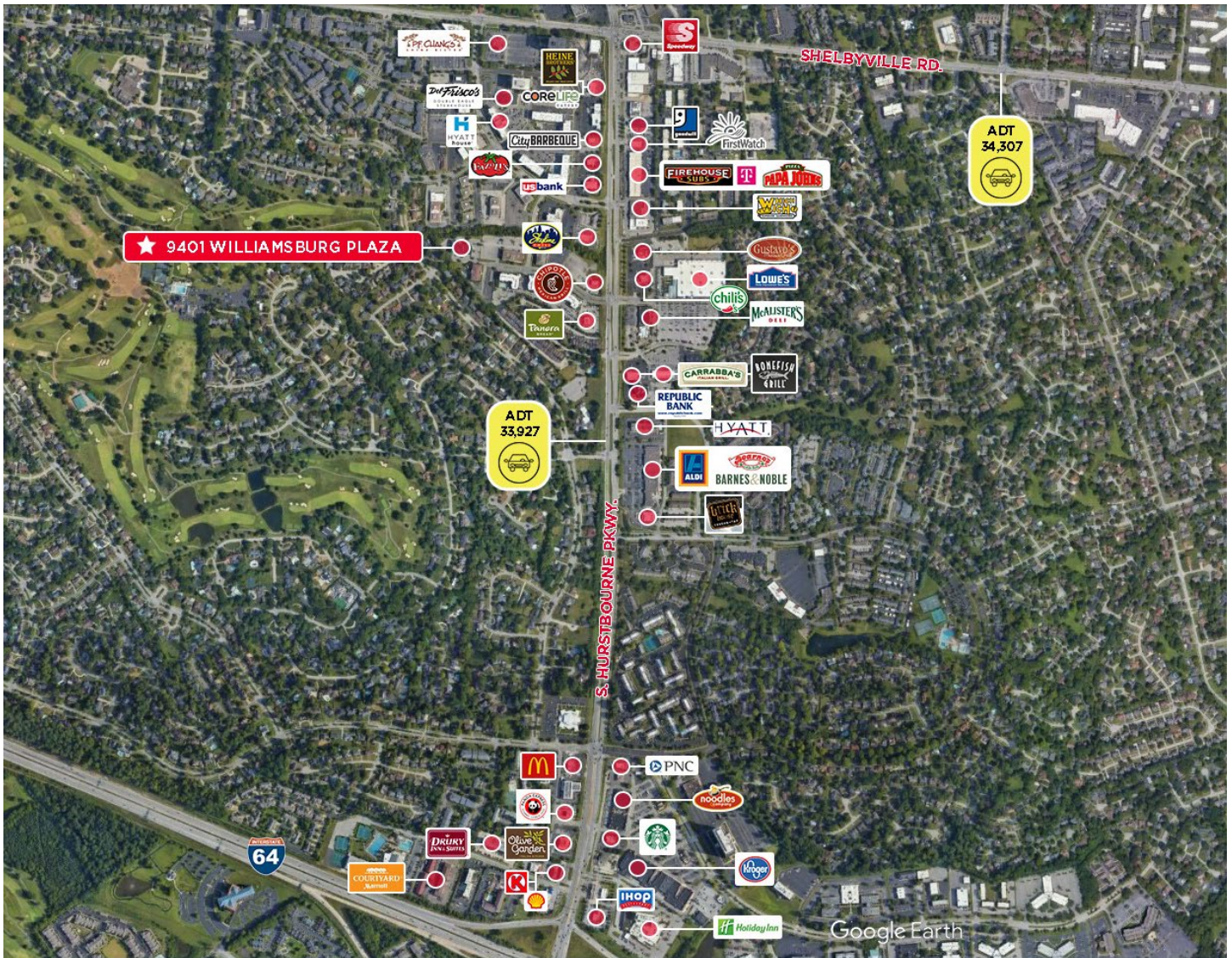
# 9401 WILLIAMSBURG PLAZA

Louisville, KY 40222

2,000 – 14,563 SF AVAILABLE



## Aerial/Location Map



**SAM GRAY**  
Senior Associate  
+1 502 589 5150 ext. 240  
samgray@commercialkentucky.com

**SAM ENGLISH, CFA**  
Senior Director  
+1 502 589 5150 ext. 244  
senenglish@commercialkentucky.com

333 E Main Street, Suite 510  
Louisville, KY 40202  
Main +1 502 589 5150  
www.Commercialkentucky.com