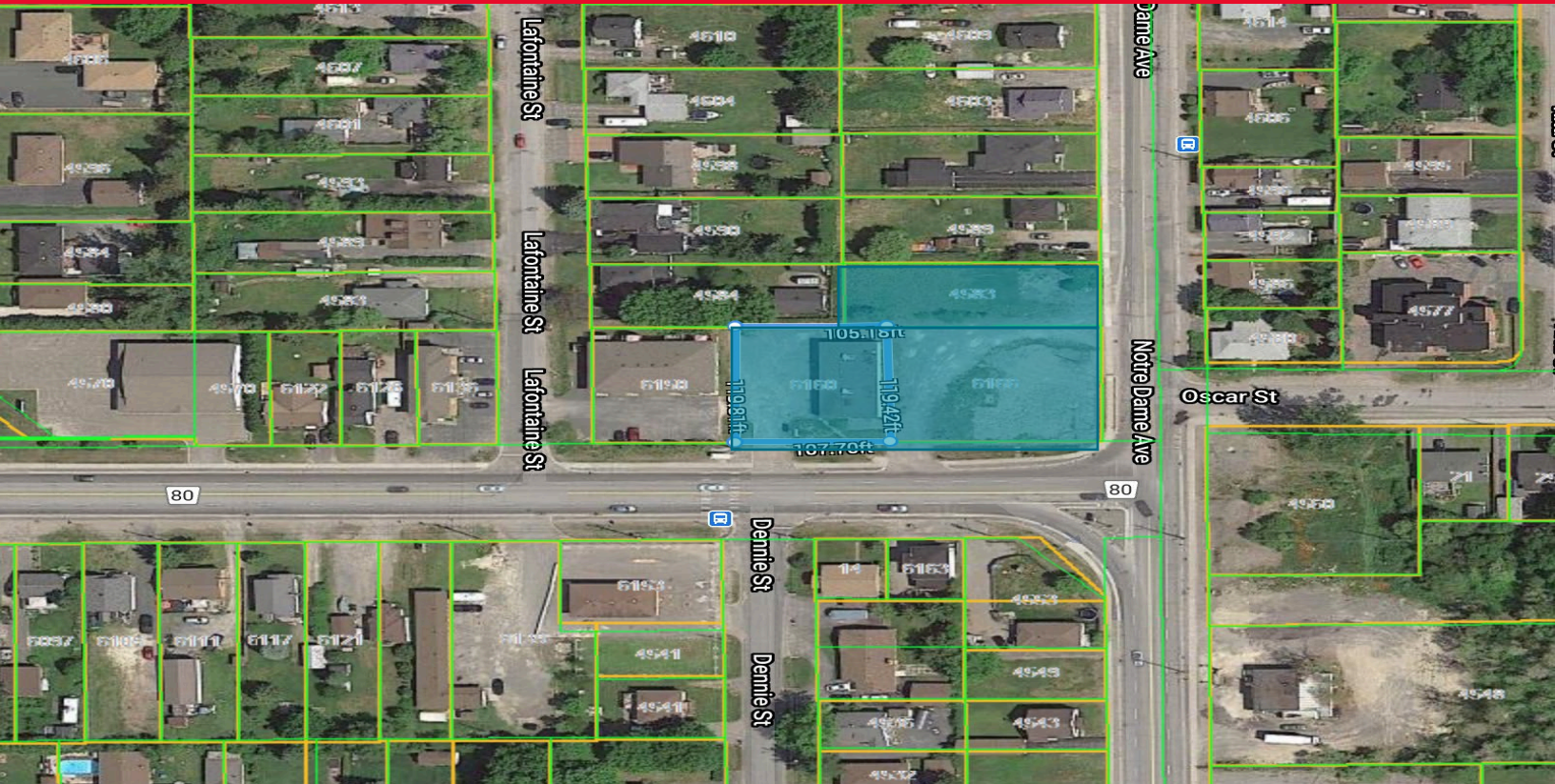


FOR SALE

6160 HIGHWAY 69 NORTH  
HANMER, ON, P3P 1K6

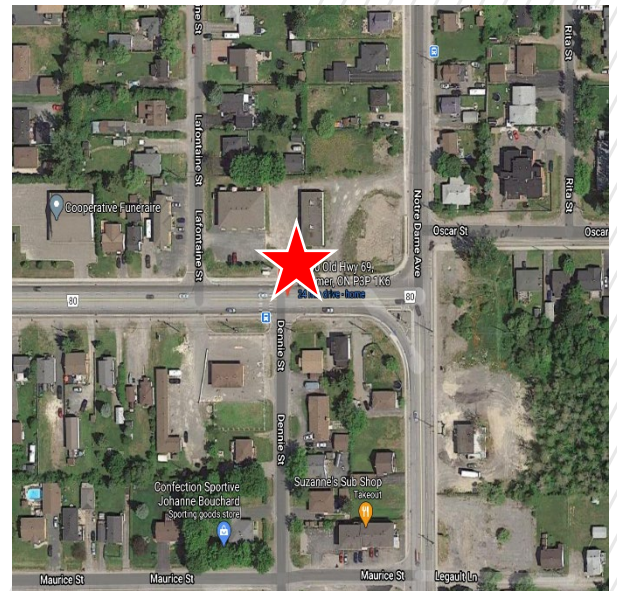


### HIGH TRAFFIC DEVELOPMENT SITE

Great opportunity to make this commercial zoned land your own at a busy intersection. Ideal site for commercial or multi-unit residential development, subject to list of use restrictions to be included in negotiated Agreement.

<b>BUILDING SF</b>	3,200
<b>LAND SF</b>	41,903
<b>YEAR BUILT</b>	Unknown
<b>PARKING</b>	Common
<b>TRAFFIC COUNTS</b>	Approximately 10,327 per day

<b>SIGNAGE TYPE</b>	None
<b>1-MILE (POP.)</b>	5,640
<b>3-MILE (POP.)</b>	14,168
<b>MED. INCOME</b>	\$127,584 / year
<b>SPACE USE</b>	Vacant



**SHER FRENCH**  
Account Director  
+1 314 391 2980  
sher.french@cushwake.com

**CHRIS TAMMI**  
Broker of Record  
+1 705 673 3000  
chris@mgre.ca

**FOR SALE**

**6160 HIGHWAY 69 NORTH  
HANMER, ON, P3P 1K6**

### **SITE READY FOR YOUR DEVELOPMENT PLANS**

Large development site at corner of MR80 and Notre Dame Ave in Hanmer (formerly Hanmer Hotel). 3 PINS with approx. 1 acre of C2 General Commercial Zoning and includes an existing slab on grade structure approximately 3,200 sq. ft currently vacant and split into 2 separate spaces (in need of repairs). Ideal site for commercial or multi-unit residential development, subject to list of use restrictions to be included in negotiated Agreement.



### **LEGAL INFORMATION**

<b>TAX PARCEL ID</b>	735030480, 735031301, 735031300
<b>2020 RE TAXES</b>	\$15,375.73
<b>ZONING</b>	C2 – General Commercial



### **RESTRICTIONS**

Property will be restricted against uses competitive with convenience stores

### **OFFERING PROCESS**

Seller will consider the submission of an offer using Seller's Letter of Intent form, which will be provided to qualified buyers. Interested parties should submit an LOI on terms where the Buyer agrees to complete a purchase of the property on the Seller's Real Estate Sales Agreement. All offers must be received by Exclusive Agent, Cushman & Wakefield. Contact information is below:

#### **SHER FRENCH**

Account Director  
+1 314 391 2980  
sher.french@cushwake.com

#### **CHRIS TAMMI**

Broker of Record  
+1 705 673 3000  
chris@mgre.ca