

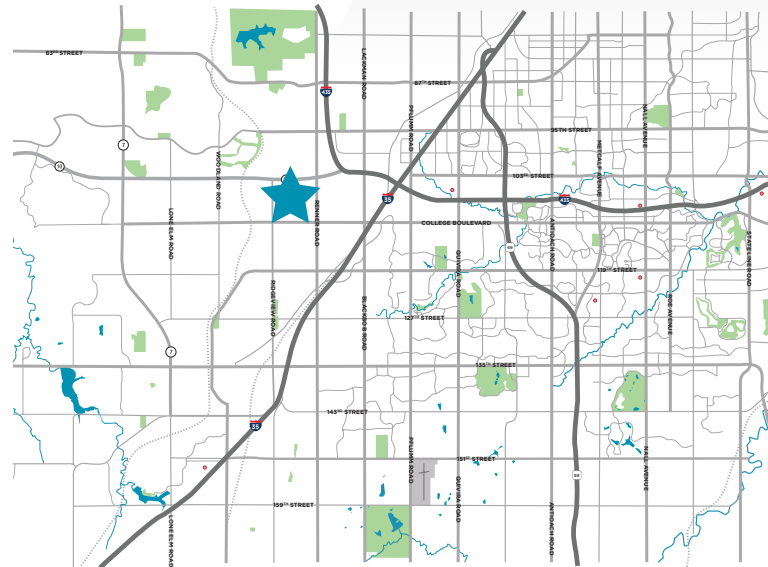
FOR SALE OR LEASE

17795 W 106th Street
Olathe, KS



Property Highlights

- Class A office/medical space
- Enjoy abundant natural light in this well-maintained property
- Local ownership
- Office suite 101 - 1,998 RSF with direct building lobby access
- Modern finishes throughout the building which is located in a park-like setting
- Lease Rate: \$23.50 PSF full service
- Easy access at K-10 & Ridgeview Road
- Close proximity to restaurants, hotels, Genesis Health Club and the Olathe Conference Center

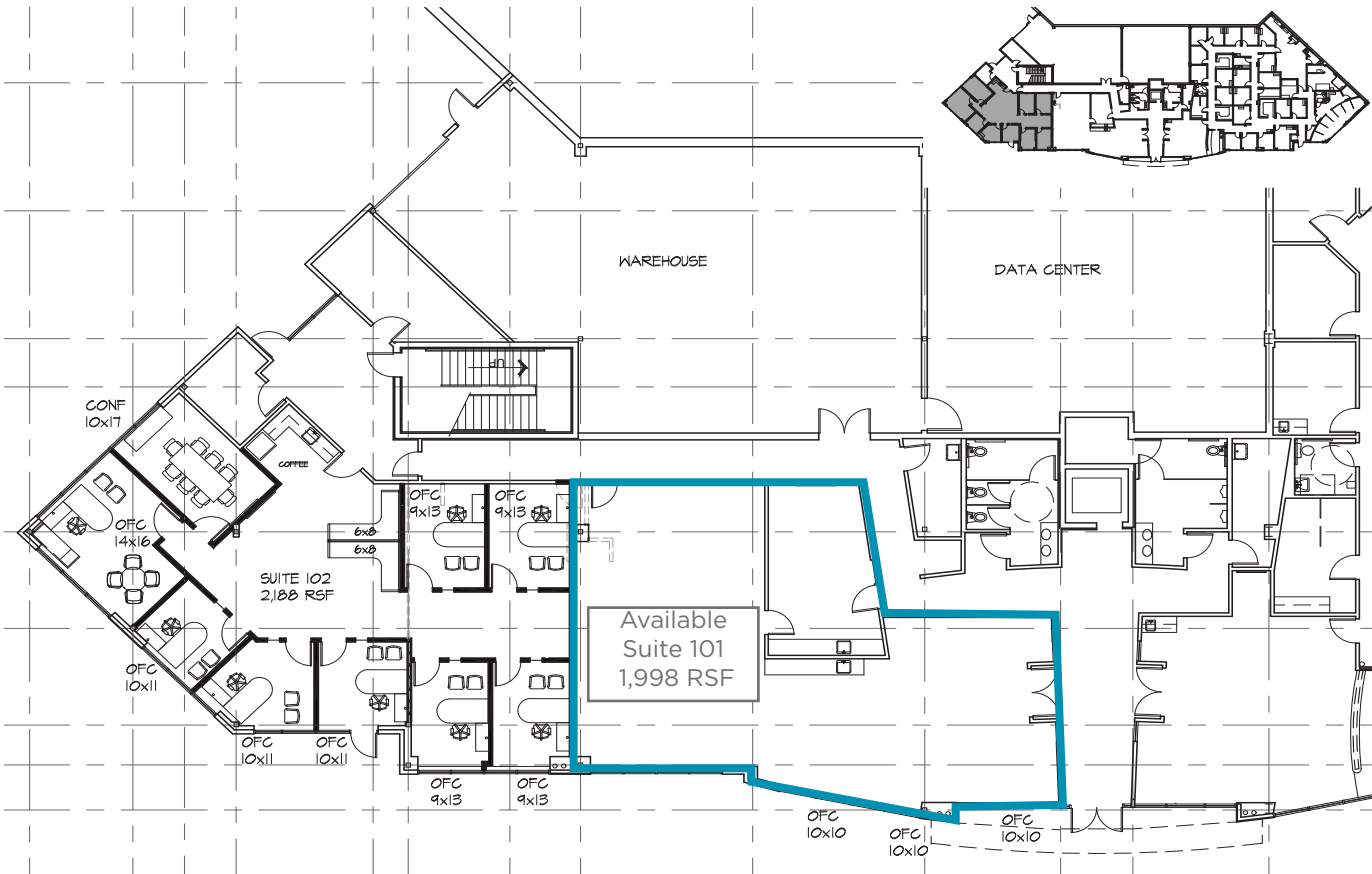


Contact

MARTY GILCHRIST, CCIM
Senior Associate
+1 816 216 5655
marty.gilchrist@cushwake.com

4600 Madison Avenue, Suite 800
Kansas City, MO 64112
Main +1 816 221 2200
Fax +1 816 842 2798
cushmanwakefield.com

SUITE 101 1,998 RSF



Contact

MARTY GILCHRIST, CCIM
Senior Associate
+1 816 216 5655
marty.gilchrist@cushwake.com

4600 Madison Avenue, Suite 800
Kansas City, MO 64112
Main +1 816 221 2200
Fax +1 816 842 2798
cushmanwakefield.com



Contact

MARTY GILCHRIST, CCIM
Senior Associate
+1 816 216 5655
marty.gilchrist@cushwake.com

4600 Madison Avenue, Suite 800
Kansas City, MO 64112
Main +1 816 221 2200
Fax +1 816 842 2798
cushmanwakefield.com



Bird's Eye View



Contact

MARTY GILCHRIST, CCIM
Senior Associate
+1 816 216 5655
marty.gilchrist@cushwake.com

4600 Madison Avenue, Suite 800
Kansas City, MO 64112
Main +1 816 221 2200
Fax +1 816 842 2798
cushmanwakefield.com