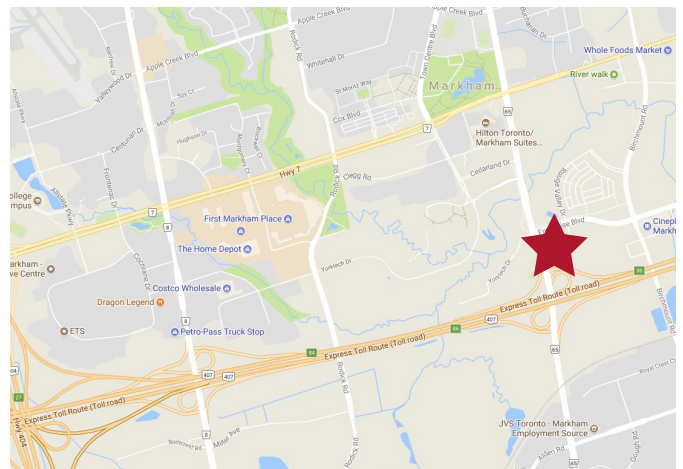




Available Space
Parking Ratio
Net Rent
Additional Rent
Comments

- Suite 300: 11,591 sf
3.5 per 1,000 sf
\$19.95 psf
\$14.26 psf (2018)
- Available immediately
 - Built out suite
 - LEED building
 - Next to Downtown Markham with over 10 restaurant options, Goodlife Fitness & more



Contact listing agent's for more information:

Glen Moore*
Senior Vice President
416 756 5432
glen.moore@cushwake.com

Mike Brown*
Senior Vice President
416 756 5416
mike.brown@cushwake.com

Stephen Connell*
Senior Vice President
416 756 5445
stephen.connell@cushwake.com



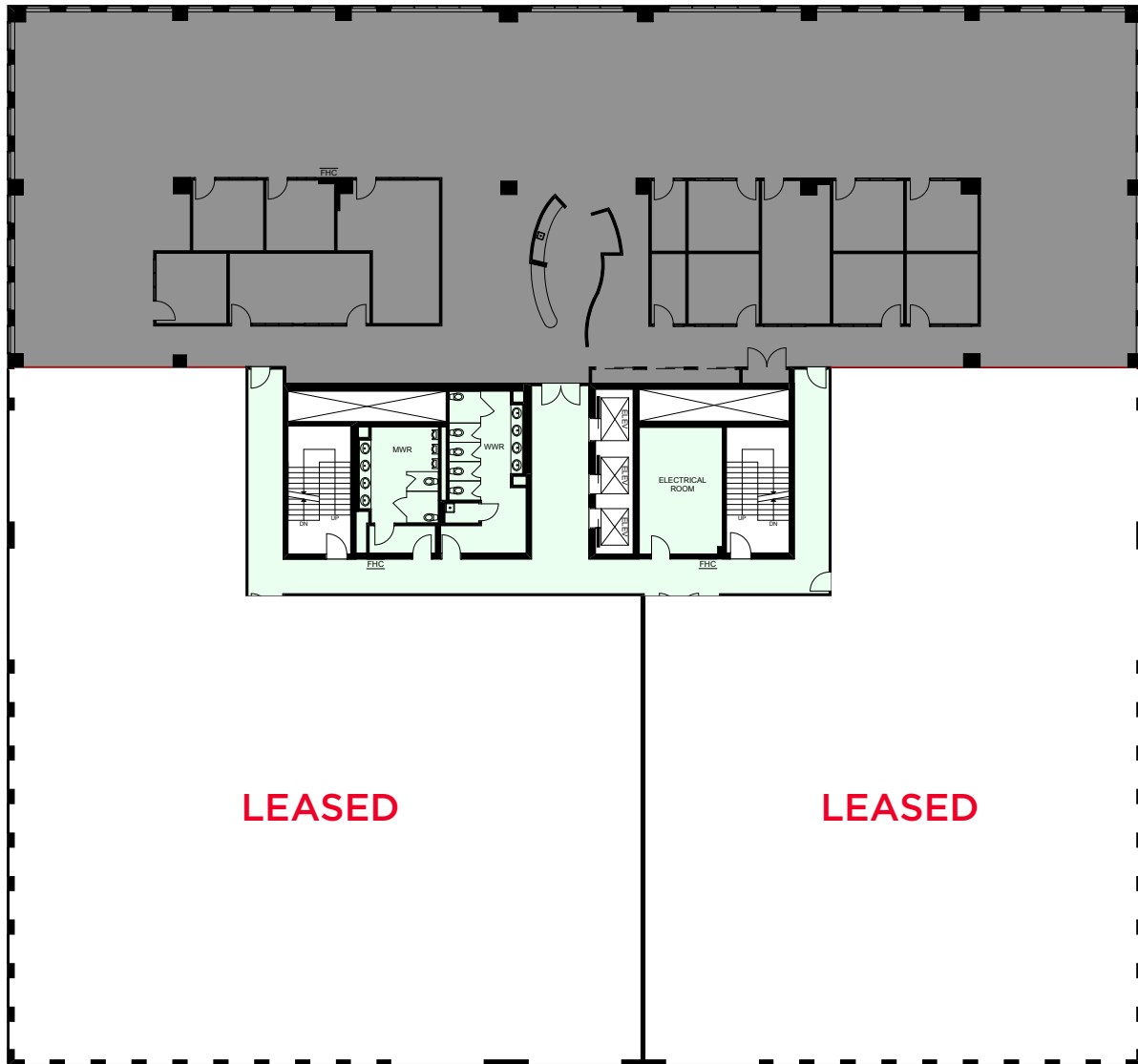
**CUSHMAN &
WAKEFIELD**

FOR LEASE - OFFICE

85 ENTERPRISE BOULEVARD

Markham, Ontario

Suite 300: 11,591 square feet



Contact listing agent's for more information:

Glen Moore*
Senior Vice President
416 756 5432
glen.moore@cushwake.com

Mike Brown*
Senior Vice President
416 756 5416
mike.brown@cushwake.com

Stephen Connell*
Senior Vice President
416 756 5445
stephen.connell@cushwake.com