

**FOR LEASE**

# Lakefront 71

9500 Priority Way W. Drive  
Indianapolis, IN 46240

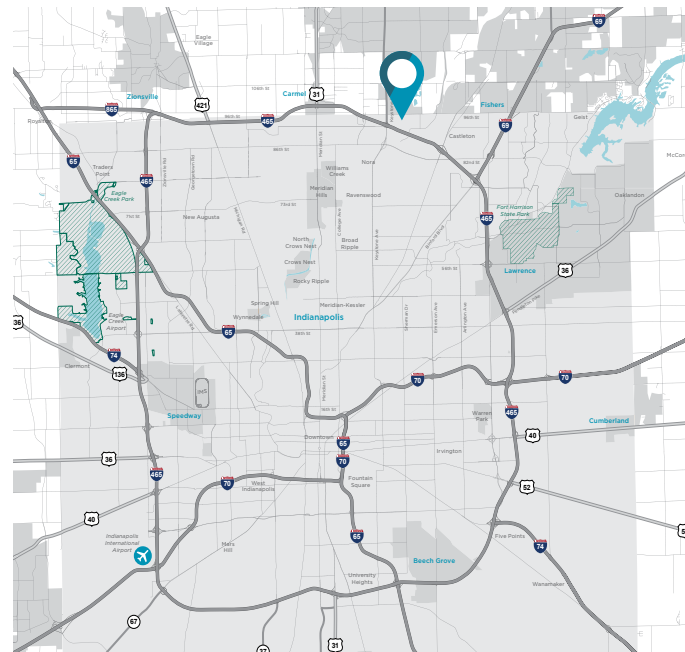


Building Signage Available

**UP TO ±6,590 SF**

## PROPERTY HIGHLIGHTS

- ±6,590 SF available remaining
- Building signage available
- On-site ownership
- At-your-door parking
- Lease Rate: \$20.50/SF full service, net of janitorial



## Contact

**BENNETT M. WILLIAMS**

Director

+1 317 639 0442

[bennett.williams@cushwake.com](mailto:bennett.williams@cushwake.com)

**MEGAN CUVELIER**

Director

+1 317 352 5422

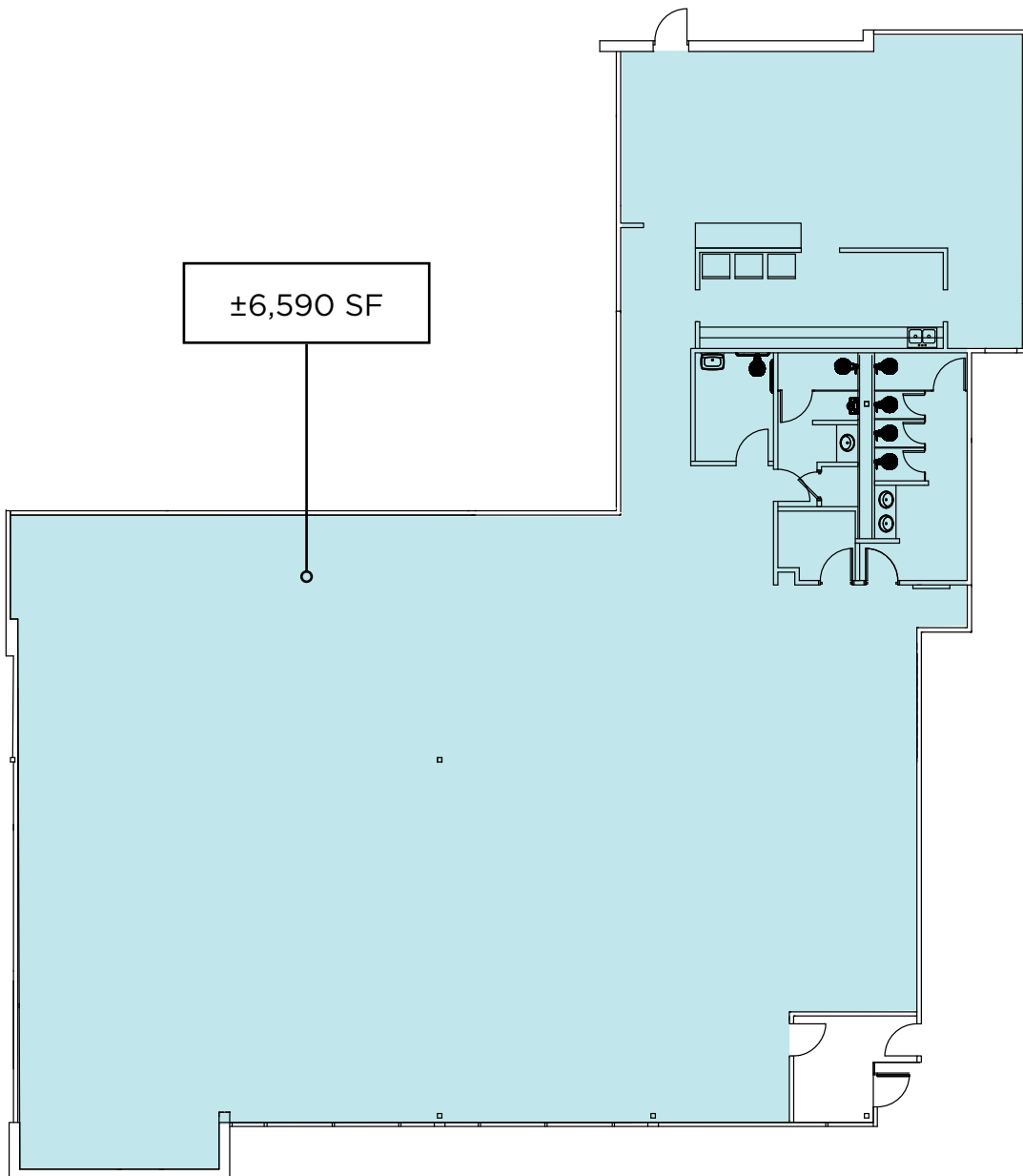
[megan.cuvelier@cushwake.com](mailto:megan.cuvelier@cushwake.com)

© Cushman & Wakefield. All rights reserved. The information contained in this communication is strictly confidential. This information has been obtained from sources believed to be reliable but has not been verified. No warranty or representation, express or implied, is made as to the condition of the property (or properties) referenced herein or as to the accuracy or completeness of the information contained herein, and same is submitted subject to errors, omissions, change of price, rental or other conditions, withdrawal without notice, and to any special listing conditions imposed by the property owner(s). Any projections, opinions or estimates are subject to uncertainty and do not signify current or future property performance.

**FOR LEASE**

# Lakefront 71

9500 Priority Way W. Drive  
Indianapolis, IN 46240



## FOR LEASE

# Lakefront 71

9500 Priority Way W. Drive  
Indianapolis, IN 46240



### PARK HIGHLIGHTS

- *The Anchor:* Full-service amenity facility with fitness center, cafe and conferencing
- *The Harbor:* Lakeside barge available for outdoor events and lounging
- *The Landing:* Outdoor seating and green space with cornhole, bocce ball court, horseshoes and fire pit
- *The Boardwalk:* Walking/jogging trail with outdoor sports court
- Day care center
- Zagster bike-share program
- Ridy scooters



Outdoor Sports Court



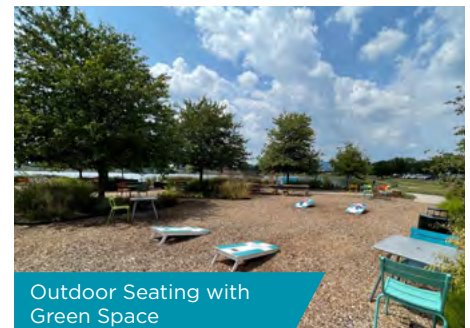
Zagster Bike-Share  
& Ridy Scooters



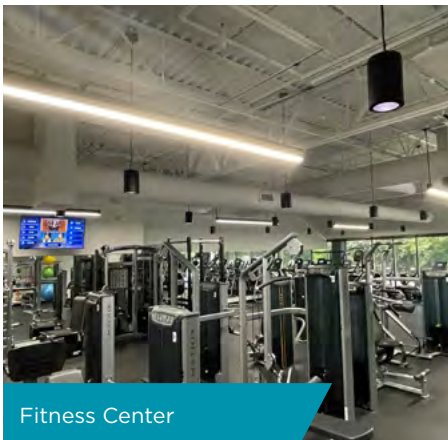
Full-Service  
Amenity Facility



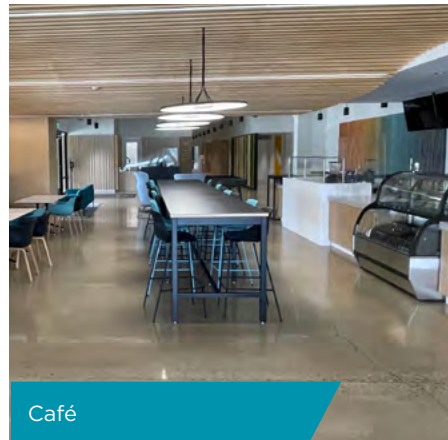
Conference Space



Outdoor Seating with  
Green Space



Fitness Center



Café



Lakeside Barge