



FOR LEASE
VIEWSTAR: MASTER PLANNED COMMUNITY
8155 CAPSTAN WAY
RICHMOND, BC



- Completion November 2021
- New Construction
- 1,044 sf - 7,286 sf
- Ample Commercial Parking

Craig Haziza*
President, CAH Realty Inc.
Retail Sales and Leasing
604 640 5891
craig.haziza@cushwake.com

PROJECT AND LOCATION

ViewStar is a landmark waterfront project located on the corner of No. 3 Road and Capstan Way in the Northwest quadrant of Richmond City. The project encompasses approximately 1.3 million square feet of development floor area over an eight acre site. When completed Viewstar will consist of 12 buildings (including a brand new City Centre North Community Centre), almost 1,000 residential units and 200,000 square feet of commercial space. The site is located directly across the street from the Capstan skytrain station which is under construction and expected to open in 2023.

OPPORTUNITY

The retail podium of this building offers tremendous exposure to Capstan Way and feature double height ceilings. All units are at the same grad level and can be combined to create a large space if required. In addition, to the street parking the building features a large grade level parkade located directly behind the units with easy pedestrian accessed by a breezeway.

ASKING RENT

\$60.00 psf

ADDITIONAL RENT

\$16.00 psf

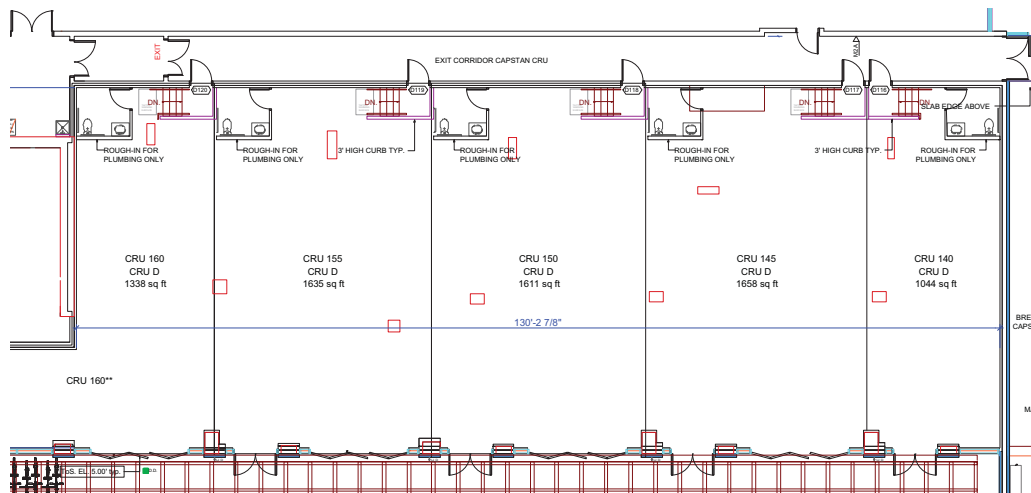
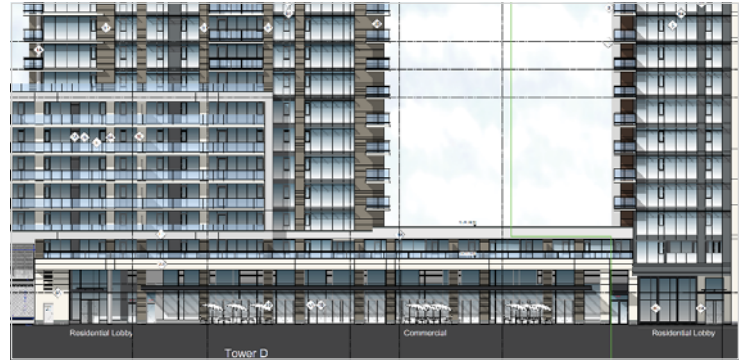
 **54** | WALK SCORE
SOMEWHAT WALKABLE

 **75** | TRANSIT SCORE
EXCELLENT TRANSIT

 **85** | BIKE SCORE
VERY BIKEABLE

AVAILABILITY

CRU 140	1,044 sf
CRU 145	1,658 sf
CRU 150	1,611 sf
CRU 155	1,635 sf
CRU 160	1,338 sf
Total	7,286 sf



Craig Haziza*

President, CAH Realty Inc.
Retail Sales and Leasing
604 640 5891
craig.haziza@cushwake.com

*Craig Haziza is licensed with CAH Realty Inc. and has a contractual relationship with Cushman & Wakefield ULC E.&O.E.: This communication is not intended to cause or induce breach of an existing agency agreement.

The information contained herein was obtained from sources which we deem reliable and, while thought to be correct, is not guaranteed by Cushman & Wakefield ULC 09/21 mf