

590 EAST MIDDLEFIELD

MOUNTAIN VIEW, CALIFORNIA

±24,873 SQUARE FEET

 SAND HILL PROPERTY COMPANY

 CUSHMAN & WAKEFIELD

BUILDING HIGHLIGHTS

590

- › Three Story Freestanding Class A Office Building
- › ±24,873 SF Available on the Ground Floor
- › Exceptional Glass Line
- › Market Ready Work Underway
- › Break Room with Adjacent Outdoor Amenity Space
- › Large Training Rooms & Conference Space
- › Fitness Center with Yoga Studio, Showers & Lockers
- › ±3.14/1,000 Parking Ratio
2 Level Parking Garage with Solar Panels
- › First Floor Clear Height: ±14'8"
- › Potential Grade Level Loading
- › 6 Dual-Head EV Charging Stations (Expanding to 12 Dual-Head Stations)



Adjacent to VTA Light Rail with Connectivity to Downtown Mountain View Caltrain Station

590 EAST MIDDLEFIELD

MIDDLEFIELD VTA
LIGHT RAIL STATION

LOGUE AVENUE



SITE PLAN

590

MIDDLEFIELD VTA
LIGHT RAIL STATION

2 LEVEL PARKING GARAGE
WITH SOLAR PANELS

BUILDING
LOBBY

E. MIDDLEFIELD ROAD

OUTDOOR AMENITY AREA

590 EAST MIDDLEFIELD
±24,873 SF AVAILABLE

PLANNED GL LOADING

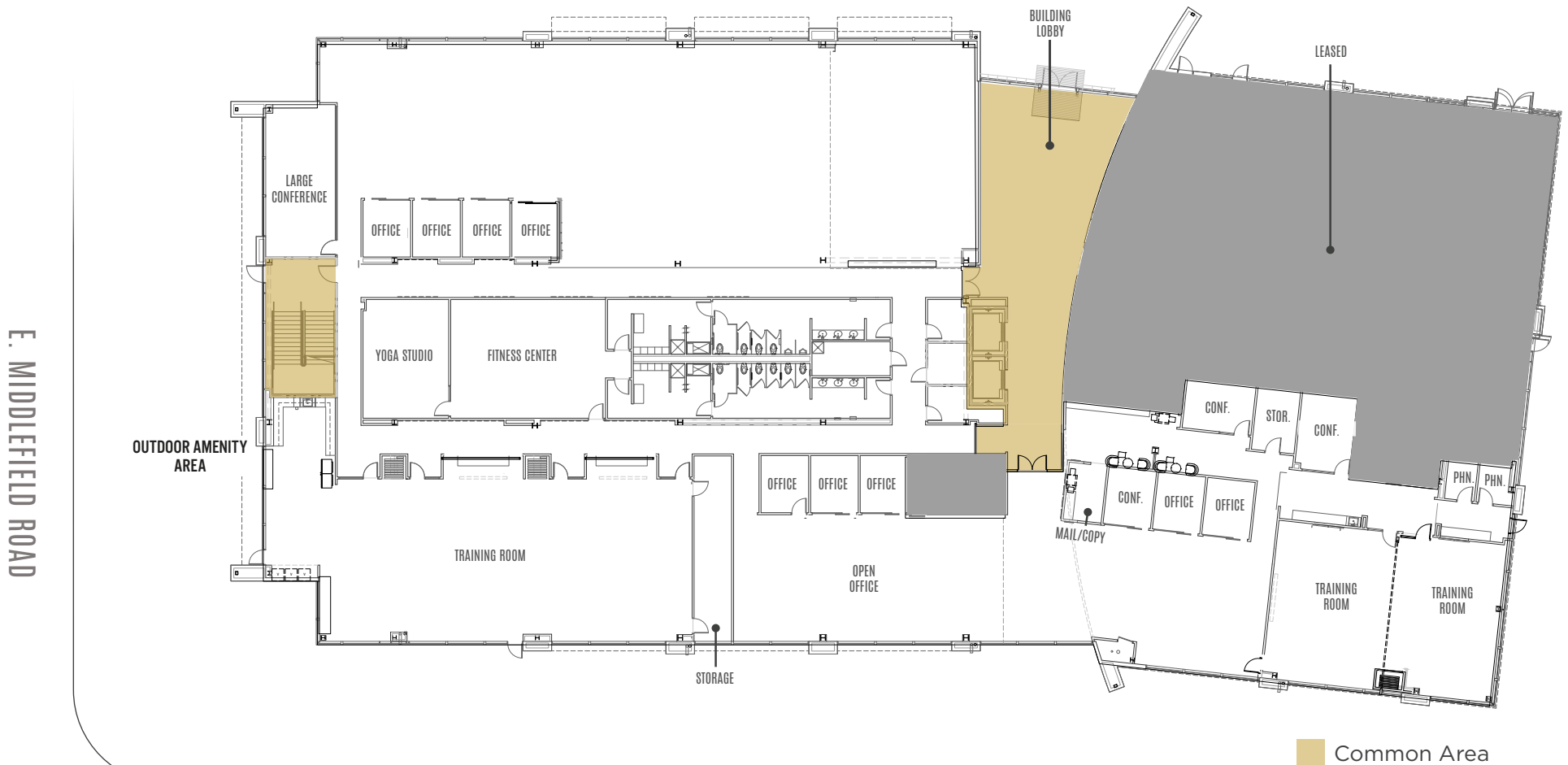
LOGUE AVENUE

FLOOR PLAN

590

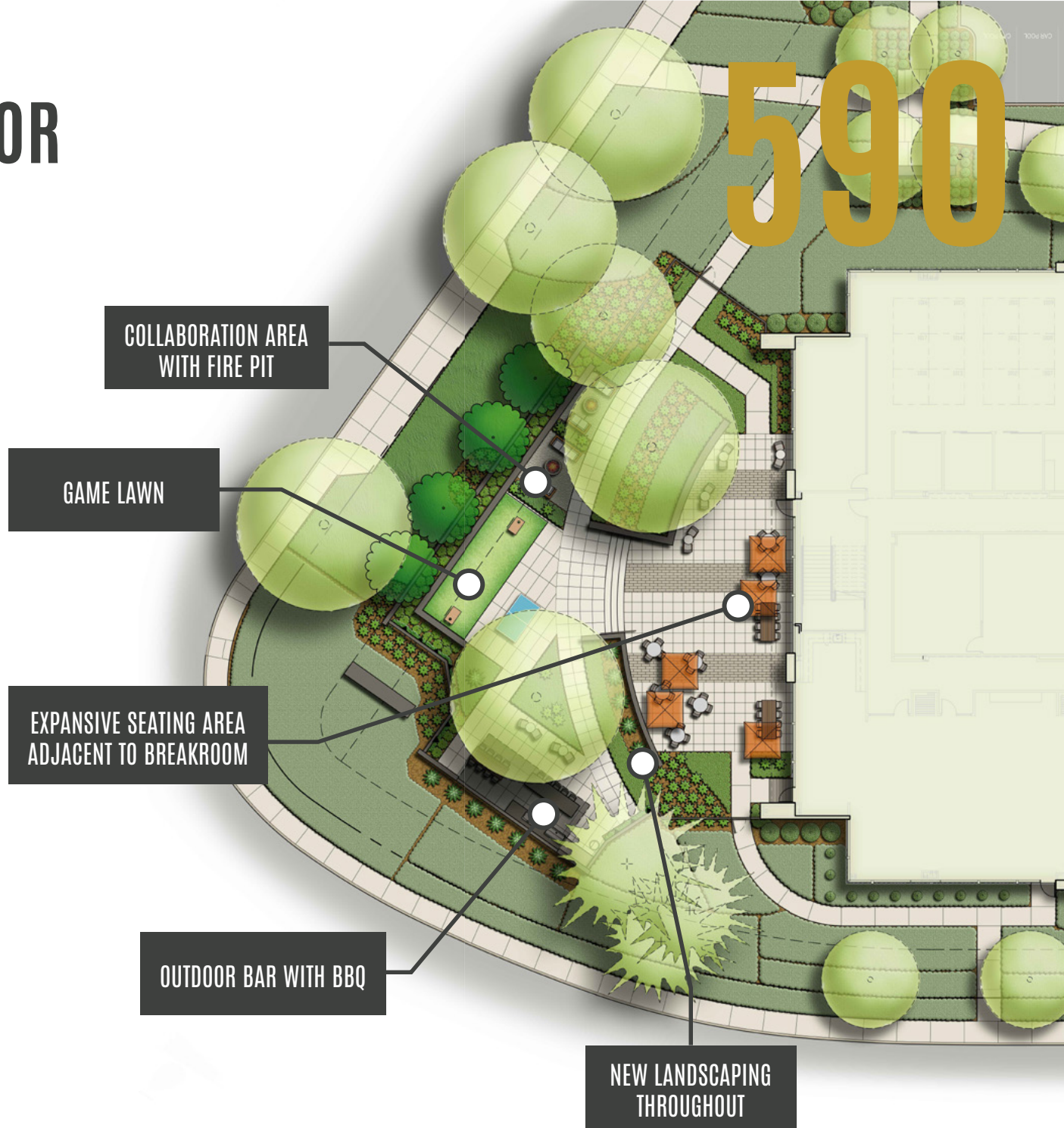
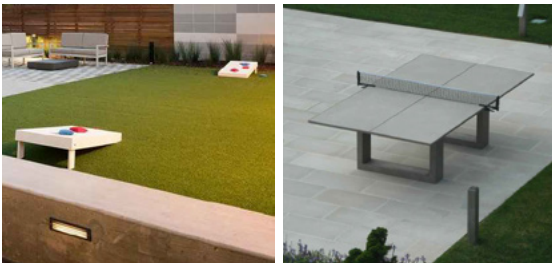
FIRST FLOOR: ±24,873 SF

- 9 Offices
- 4 Conference Rooms
- 2 Large Training Rooms
- Mail/Copy Area
- Fitness Center & Yoga Studio with Showers & Lockers
- Break Room with Adjacent Outdoor Amenity Space



LOGUE AVENUE

PROPOSED OUTDOOR AMENITY AREA



NEARBY AMENITIES



TRANSPORTATION MAP



590 EAST MIDDLEFIELD

MOUNTAIN VIEW, CALIFORNIA

±24,873 SF



BRANDON BAIN

408 615 3416

brandon.bain@cushwake.com

LIC #01308375

ERIK HALLGRIMSON

408 615 3435

erik.hallgrimson@cushwake.com

LIC #01274540

KELLY YODER

408 615 3427

kelly.yoder@cushwake.com

LIC #01821117

STEVE HORTON

408 615 3412

steve.horton@cushwake.com

LIC #01127340